

October 2009

Kampong Seila District Data Book 2009

District Code Nr: 1804

Preah Sihanouk Province

Table of Contents

List of Abbreviations	i
Glossary.....	ii
Preface	vi
Introduction	vii
SECTION A: GEOGRAPHY	1
1 Administration and Infrastructure.....	3
2 Land Use and Natural Resources.....	5
3 Geography	7
3.1 Land Area	7
3.2 Distances between Offices	7
SECTION B: DISTRICT PROFILE	9
1 General Information	11
1.1 Population of the District.....	11
1.2 Occupations	12
1.3 Property	14
2 Infrastructure and Economy.....	16
2.1 Roads in meters over 3 years.....	16
2.2 Sewerage Pipes in meters over 3 years.....	16
2.3 Drainage and Bridges	16
2.4 Services in the District	16
2.5 Agriculture.....	17
3 Social Aspects	28
3.1 Education	28
3.2 Health.....	34
3.3 Water and Sanitation	36
3.4 Vulnerable groups.....	40
3.5 Migration	42
4 Natural Resources and Environment (NRE).....	44
4.1 Families involved with NRE issues over 3 years	44
4.2 Percentage of Families involved with Natural Resource issues, by Commune, for 2008	44
4.3 Percentage Houses with access to Garbage collection and Families affected by environmental Pollution, by Commune, for 2008	44
4.4 Percentage Families using chemical Fertilizer and chemical Pesticides, by Commune, for 2008 ..	44
5 Administration and Security	45

5.1	Birth Registration across 3 years.....	45
5.2	Number of unregistered Infants born in 2008, by Commune	45
5.3	Registered criminal Cases over 3 years	45
5.4	Registered criminal Cases per 10,000 people, by Commune, for 2008.....	45
5.5	Number of registered Land Disputes, by Commune, in 2008	45
6	Gender	46
6.1	Registered Domestic Violence over 3 years.....	46
6.2	Percentage of registered cases of Families experiencing domestic Violence, by Commune, in 2008	46
6.3	Women's involvement over 3 years.....	46
6.4	Percentage of Female Participants in Civil Society and of 18-60 year women with uncertain Jobs, by Commune, in 2008	47
6.5	Female-headed Households over 3 years.....	47
6.6	Percentage female-headed Households and with Children of less than 5 years old, by Commune, in 2008	47
7	Indigenous People in the District	48
7.1	Ethnic Minorities in the District over 3 years.....	48
7.2	Other Minorities in the District over 3 years.....	48
	SECTION C: PLANS AND PROJECTS	49
8	Priorities and Plans	51
8.1	Priorities of Commune Councils for 2009 in the District by Sector	51
8.2	Temporary Agreements by Commune, for 2009	54
8.3	Outputs, estimated and actual costs of C/S Fund Projects between 2005 and 2008, by Commune	64
8.4	Total Expenditure on C/S Fund Projects by sector and commune between 2005 and 2008.....	65
8.5	Actual 2009 C/S Fund projects by Commune	65
9	District level Projects from 2006 to 2009	66
9.1	District Initiative Infrastructure Projects from 2006 to 2009	66
9.2	District Initiative Service Projects from 2006 to 2009	66
9.3	Inter Commune Council Projects in 2008 and 2009	67
9.4	Other Projects in 2008 and 2009	69
	SECTION D: SERVICES AND ORGANIZATIONS	71
10	Infrastructure.....	73
10.1	Length of and Expenditure on Roads in 2008, by District	73
10.2	Scale of and Expenditure on Irrigation in 2008, by District.....	73
10.3	Power Supply in 2008, by District	74
11	Health Facilities.....	75

11.1 Health Facilities in the Province, by Operational District.....	75
11.2 Health Facilities and Staff in the province, by Operational District.....	76
11.3 Deliveries in 2007 in the Province, by Operational District.....	76
12 Education	77
12.1 Schools, Classes, Students, Staff, for for all levels, for 2007/2008 by District.....	77
12.2 Characteristics of Schools and School Principals for 2007/2008 by Commune	77
12.3 Enrolment by Level of Education, 2006/2007 by Commune	77
12.4 Enrolment by Level of Education, 2007/2008 by Commune	78
12.5 Aspects of Enrolment for 2007/2008 by Commune.....	78
12.6 School Buildings for all schools in the District for 2007/2008, by Commune	78
12.7 Conditions of Classrooms and Existence of Separate School Office and Library, by Commune	78
12.8 Community Participation and Financing across all schools in the District for 2007/2008 by Commune	79
12.9 Percentage Student Flow Rates and Graduation by level 2006/2007, by Commune	79
13 Staff and Resources at the District	80
13.1 District Councilors elected in 2009	80
13.2 Committees of the Council.....	80
13.3 Board of Governors.....	80
13.4 Offices under Sala Krong, Sala Srok and Sala Khan	81
13.5 Municipality/District/Khan line offices.....	81
13.6 Properties and Equipment of District Administration	81
13.7 Registered Revenue of the District Administration in 2008	82
13.8 Services in the District	82
13.9 Civil Society Organizations active in the District.....	83
13.10 Private Sector Organizations.....	84
SECTION E: POVERTY DATA	85
14 Data on Poverty	87
14.1 Predicted Poverty Rates for 2009, by commune	87
14.2 Poverty data from survey.....	87

List of Abbreviations

#	Number
AGR	Agriculture
BR	Birth Registration
C. Pilot	Piloted Commune
C/S	Commune / Sangkat
CBO	Community-Based Organization
CDB	Commune Database
CDPD	Commune Development and Planning Database
CIP	Commune Investment plan
CLTS	Community Led-Total Sanitation
Comm.	Commune
Com Cov	Commune Covered
CPA	Complementary Package of Activities
CPS	Community Preschool
CCWC	Commune Committees for Women and Children
DANIDA	Danish International Development Agency
DDLG	Democratic Development and Local Governance Project (EC-UNDP)
DFID	Department For International Development (UK)
DIP	District Initiative Project
DIS	District Information System
District PDRD	District Office of Rural Development
District WP	District Work Plan
DIW	District Integration Workshop
DoLA	Department of Local Administration
Dr	Doctor
DWRM	District Office of Water Resource and Meterology
ECD	Early Childhood education (part of PE)
EMIS	Education Management Information System
Event IC	Celebration of International Days
FDH	Former District Hospital
GTZ	German Society for Technical Cooperation (Gesellschaft für Technische Zusammenarbeit GmbH)
Ha	Hectare
HC	Health Center
HC (NB)	Health Center (no building)
HH	Headed Household
HSI	Intervention for Health
HP	Health Post
HW	Hand Washing
ICC	Inter Commune Council
IFAD	International Fund for Agricultural Development
IND	Industry
Inter-commune	Inter-Commune Project Management Committee or Inter-commune project
IO	International Organization
LASED	Land Allocation for Socio-Economic Development
LGCR	Local Governance for Children's Rights
M&E	Monitoring and Evaluation
MA	Medical Assistant
MoEYS	Ministry of Education, Youth and Sports
MoH	Ministry of Health

MoP	Ministry of Planning
MPA	Minimum Package of Activities
MW1	Primary Midwives
MW2	Secondary Midwives
n/a	Not available
NCD	National Contracts Database
NCDD	National Committee for Sub-National Democratic Development
NGO	Non-Governmental Organization
NRML	Natural Resources Management and Livelihood
NU1	Primary Nurse
NU2	Secondary Nurse
OD	Operational District
ODF	Open Defecation Free
Ope. Costs	Operational Costs
Others	Other Staff
PBW	Public Works
PDoEYS	Provincial Department of Education, Youth and Sport
PDRD	Provincial Department of Rural Development
PDWRM	Provincial Department of Water Resource and Meteorology
PE	Parenting Education
PHAST	Participatory Hygiene and Sanitation Transformation
PHD	Provincial Health Department
PID	Project Information Database
PMC	Project Management Committee
Pop 04-05	Population Covered 2004 or 2005
PSDD	Project to Support Democratic Development through Decentralization and Deconcentration
RRD	Rural Road Development
RH	Referral Hospital
RILGP	Rural Investment and Local Governance Project
RPRP	Rural Poverty Reduction Program
RuLIP	Rural Livelihoods Improvement Program
SIDA	Swedish International Development Cooperation Agency
SPPA	Senior Provincial Program Advisor
TBA	Traditional Birth Attendant
UNDP	United Nations Development Project
UNICEF	United Nations Children's Fund
Vil	Village
Vil Cov	Village Covered
VIL-HC	Distance from Village to Health Center
WASH	Water, Sanitation and Hygiene
WRM	Water Resource and Meteorology

Glossary

C/S Fund: The Commune/Sangkat Fund is established and managed by the Government of Cambodia to provide financial support for development projects and administrative costs of Commune/Sangkat Councils. The amount is determined as a percentage of the National Budget (for 2009: 2.8% over the 2008 budget) and is expected to increase gradually over the years. The total 2009 budget under this fund is \$ 27,643,902 (of which \$ 19,272,170 is for Development Projects and \$ 8,371,731 for Administration). Under the Rural Investment and Local Governance Project the World Bank currently reimburses the costs of development projects if these meet the Bank's criteria.

CDB: the Commune Data Base is a national database, compiled by the Ministry of Planning, on the basis of detailed questionnaires, completed at village and commune level, which are then sent to the Departments of Planning for data entry. The most recent round of data collection took place at the end of 2008 (and is reflected in the District Data Books). Commune, District and Provincial Profiles can be generated from this database and should be available from provincial Departments of Planning.

CDPD: the Commune Development and Planning Database is a database maintained by Departments of Planning and Ministry of Planning, recording proposed activities as determined and prioritized by Commune and Sangkat Councils; the Temporary Agreements between these councils and supporting agencies, as decided at District Integration Workshops and details on projects that actually take place at commune, district and provincial levels.

CIP: The Commune Investment Plan is a rolling three-year plan, developed and decided by the Commune or Sangkat Council. It sets priorities and identifies the projects proposed for the years to come.

Commune and Sangkat (C/S): the Communes (in rural areas) and Sangkats (in urban areas) are the lowest and smallest units of local government. Councils are elected directly, once in five years, for the 1417 Communes and 204 Sangkats. In the C/S there are 14,119 villages, which have Village Chiefs, but don't constitute a formal level of local government.

DIP: the District Initiative Project is jointly supported by the MDLF (Multi-Donor Livelihood Facility (supporting the NRM&L Program)) and PSDD. In 2009 it covers 106 districts, 60% of the total in the country, with a budget of \$ 3.2 million. It is focused on capacity development in planning, democratic development, public competitive procurement, financial management and service delivery.

DIS: The District Information System is a national database maintained by NCDD, recording resources, staff, revenue, infrastructure and equipment available in the 193 Districts and Khans throughout the country. The last update took place in July 2009

District, Municipality and Khan constitutes the third level of Government in Cambodia. There are 159 rural Districts, 26 Municipalities and 8 Khans of Phnom Penh Capital. They all have Councils which were, for the first time, elected in May 2009, by the Commune/Sangkat Councilors. These councils have a mandate for 5 years.

DIW: District Integration Workshops are held between July and October, to bring Commune/Sangkat Councils, looking for support for their projects, together with the governmental and non-governmental agencies that may provide support.

ICC: Inter Communes Council projects are executed in 10 provinces under the Democratic and Decentralized Local Governance Project (DDLG). This five year project (2006-2010) is executed by Ministry of Interior and funded by the European Commission and UNDP. The project focuses on improving dialogue partnership and accountability; create a network of Commune Councils at the provincial and national level and support and contribute to local area development for poverty reduction. The work under the ICC component supports investments and services formulated through inter-commune dialogue and planning.

MEDiCAM: A non-profit and non-partisan membership organization for NGOs active in Cambodia's health sector. It is the primary networking agency for health-related NGOs

NCDD: the National Committee for sub-National Democratic Development is the inter-ministerial body charged with the implementation of the Organic Law (a key legislative document, adopted in 2008, outlining the envisaged decentralization). NCDD also channels substantial financial assistance by a number of Development Partners, to projects and programs at various levels. This amounted to over \$ 91 million in 2008. More information at: www.ncdd.gov.kh. This website also provides access to reports, manuals, legal documents, details on projects and more.

OD: the Operational Districts are the districts as defined and used by the Ministry of Health. These do not coincide with the 193 (Administrative) Districts and Khans, as used by all other RGC agencies. The Operational Districts are usually larger, and so there are 77 Operational Districts against 193 administrative Districts and Khans. However they do fit within the boundaries of administrative provinces.

PID: The Project Information Database is the database maintained by NCDD at national and sub national level, to follow all aspects of projects by Commune and Sangkat Councils, including the C/S Fund projects

Provincial Investment Fund (PIF)

The Provincial Investment Fund is allocated to all Provinces and Municipalities according to a population based formula. Part of the fund is earmarked for support to planning activities of the Provincial / Municipal Department of Planning; and to gender mainstreaming activities of the Provincial Department of Women's Affairs. The remaining "un-earmarked PIF" is allocated by PRDC to sectoral technical departments against established criteria and in response to proposals with prioritisation taking into account: priorities formulated by the CS Councils and aggregated by District into District Priority Activities Matrices (DPAM); alignment with national planning and poverty alleviation criteria, complementarity with other planned activities; and performance of the Department concerned in implementation of activities in previous years. With this provisional allocation, the Department then programs activities through the District Integration Process. Finally, the agreed activities, plus support costs amounting to no more than 25% of the total, are included in a sub-contract signed between PRDC and the Department, pursuant to the overall PSDD contract signed between NCDD and PRDC. Total budget has been around \$ 2 million per year.

Province: the 23 Provinces and Phnom Penh Capital City represent the 2nd layer of government. They vary in size, from very small, like Kep (approx. 36,000 people) and Pailin (approx. 70,000 people), or large but with small populations, like Mondulkiri (over 60,000 people), and Ratanakiri (over 153,000) to densely populated and large, like Kampong Cham (over 1.7 million people) and Kandal (approx. 1.4 Million people).

PSDD: the Project to Support Democratic Development through Decentralization and Deconcentration is funded by DFID (UK), SIDA (Sweden) and UNDP and runs from 2006 till the end of 2010 (including a one year extension). Annual budgets range from \$ 11 million to over \$ 18 million. The project provides core technical support to NCDD and to the provinces, financial support to the C/S Fund, District Initiative, Provincial Investment Fund and capacity building support through training, studies and advisory services.

RILGP: The Rural Investment and Local Governance Project is a World Bank funded project that provides substantial support to C/S Fund projects and to developing the required infrastructure, policies, systems and skills. It started in 2003 with a Loan for \$ 22 million for 2003-2007 and was then extended with a Grant of \$ 36 million for the period of 2007-2010. Discussions about a possible RILGP 2 are taking place between RGC and the World Bank.

RPRP: the Rural Poverty Reduction Project is a seven year project from 2004 till 2010, funded by IFAD and UNDP and implemented through the Ministry of Agriculture, Forestry and Fishery, supported by the Ministry of Interior and facilitated by NCDD. The project is active in the provinces Prey Veng and Svay Rieng and focuses on 120,600 households below poverty line. The objective is poverty reduction with the active participation of the poor through improved livelihoods, Strengthened capacity, Sustainable farming systems and natural resource management, new and/or rehabilitated infrastructure development, increase accessibly to technology, services and markets for their economic and social development.

RULIP: the Rural Livelihoods Improvement Project is implemented by the Ministry of Agriculture Forestry and Fisheries (MAFF)' Project Support Unit- PSU, with the NCDD playing the role of cooperating agency. Funded by IFAD and UNDP, the project will run till 2014. The target group consists of poor households who have little or even no land, few livestock or other assets and often many dependents. The main goal of the project is to directly or indirectly improve the livelihood systems, food security and incomes of a total of 33,900 rural poor, ethnic minority and female headed households in targeted village of Kratie, Preah Vihear and Ratanakiri provinces in a sustainable manner.

Seth Koma: The UNICEF funded Seth Koma program focuses on measurable action for children and women. During 2006 -2010 it is implemented in six provinces. Government and UNICEF pursue a set of inter-related goals, addressing critical stages of the life cycle of the child: a) Mothers have safe pregnancies and deliveries and healthy newborns; b) best possible start in life of infant; c) Children enter schools at the right age of six years; d) Children are protected from exploitation, abuse, violence, discrimination and other risks; and e) Youth and adolescents acquire life skills, express their views, participate in the decisions.

Preface

The Government of Cambodia attaches great importance to optimal use of scarce resources and to participatory planning and management at all levels. The Organic Law which was adopted in 2008 provides the legal context for further steps towards improving and decentralizing planning, management and monitoring, and towards greater accountability and transparency of institutions at sub-national levels.

The Government has established elected Councils at the sub-national levels, and we will progressively give them the responsibilities, together with the human and financial resources, to deliver a wide range of public services. They will be more democratic, more efficient, more transparent and accountable, better at addressing gender and other inequalities, and at fighting corruption. We recognize that development does not come from government alone; it needs the involvement of citizens, civil society and the private sector, and the new system will facilitate this.

A central element in this process is the availability of information on any aspect of development to all concerned parties. The newly elected Councillors at District and Khan level, line departments operating at these levels, but also NGOs, Development Partners, Commune Councillors and citizens throughout Cambodia need information on problems and requirements, resources and opportunities, services and agencies, plans and projects. They will need such information to better understand the present situation, set targets for the future, monitor progress, know what others are doing and to apply resources wisely and this is the reason the District Data books will be so valuable.

The District Data Books are a major step towards full transparency and towards informed planning and decision-making. They provide all available data at District, Khan, Commune and Sangkat level in easily accessible formats, in Khmer and English, through over 16,000 printed copies, CD-ROMs and the NCDD website.

This is the first time in Cambodia (and possibly in South East Asia) that such detailed information is made so widely available and NCDD should be commended for the hard work that has gone into this. We also thank the Ministry of Planning, which provided the detailed data of the Commune Data Base, the sectoral ministries and provincial authorities who contributed data and the Development Partners who provided financial support.

It is our sincere hope that the publication of the District Data Books will strengthen capacities, especially at district levels, for evidence-based development planning. We also hope that this information will deepen the understanding among Ministries, Provincial Authorities, Development Partners, NGOs and research agencies of the realities at commune and district levels.

We call upon all to use and distribute this information, complement or correct where appropriate and to contribute new data in the years to come.

Sar KHENG

Deputy Prime Minister, Minister of Interior and Chairman of NCDD

Introduction

Purpose

The purpose of the District Data Books is to bring together information on any aspect of life and development of Districts, Khans, Communes and Sangkat, together and make this widely available. The primary targets are the newly elected District Councilors, district level line departments, provincial agencies, Development Partners and NGOs operating at this level. They need detailed knowledge on current living conditions, natural resources, infrastructure, agriculture and other economic activities, current service levels, past and planned projects and available resources.

While much information exists on many of the above aspects, it is often hard to access that information and much is lost to reports, databases and statistics that are not widely shared. Data are often only available in one language and often out-of-date, and many reports cover only one sector or region.

We found that these problems are especially acute at the district level. Now that Districts are becoming a much more significant level of local government and development planning, there is an urgent need for wide-ranging data to be used for setting base-lines, planning and prioritizing, monitoring and learning.

Approach

We have attempted to identify and compile all available statistics, reports, maps and other data at district and/or commune level. From this we have selected information that is available for all or most districts, reasonably reliable and up-to-date, sufficiently detailed and of possible interest to development planners, decision makers, agencies and citizens.

The major sources of the information in these District Data Books are:

- a) The Commune Data Base information over the years 2006 to 2009 (the most recent data were collected late last 2008), as compiled by the Ministry of Planning
- b) Detailed information directly collected from the Ministry of Health, the Ministry of Education, Youth and Sports and (for maps) the Ministry of Land Management, Urban Planning and Construction
- c) The Project Information Database (PID) at NCDD (up-to-date)
- d) The Commune Development and Planning Database (CDPD) (up to date)
- e) The District Information System (DIS) (updated per Mid 2009)
- f) Direct data collection at provincial and district level on private sector, irrigation, roads, and electricity, through provincial agencies
- g) Medical data collected from MEDiCAM
- h) The ID Poor Project – for poverty data on a number of provinces and districts
- i) NCDD's work on predictive poverty rates
- j) Specific projects for outputs, plans and budgets (Seth Koma, RILGP, RPRP and ICC)

Limitations of the data

We are fully aware that the data we collected are not always complete, consistent or correct. While we have rejected information that was wrong or very incomplete, we decided not to aim for statistical and scientific perfection, but to include information that is useful, relevant

and comprehensive. We also accepted different sources for the same data as this may encourage discussion on the quality of the respective data.

We strongly encourage anyone who notes errors or incompleteness in these data to contact us and to share their data. We hope that the next round of producing such District Data Books can draw on wider sources and more complete data.

We encourage the District Administrations, who receive these data also in digital format, not only to use these for their planning and monitoring, but also to start correcting and updating these data and to share new data with NCDD for future use.

Contents

The information in the following pages is organized in five sections:

- a) **Geographical data:** this section provides maps on infrastructure and administration and on land use and natural resources management. These maps are also provided in large format to all Districts and Khans.
- b) **District Profile:** this presents wide ranging data, covering 2006 – 2009, at district and commune level, extracted from the Commune Data Base, but edited for better understanding.
- c) **Plans and Projects:** this section presents development priorities determined by Commune and Sangkat Councils, Temporary Agreements, outputs and expenditure of major projects at Commune and District level over 2006 – 2008 and plans and budgets for 2009.
- d) **Services and Organizations:** this section provides details on key infrastructure (roads, electricity, irrigation systems) and services in health and education at district and commune level. It also provides an inventory of resources at the District Administration, NGOs operating in the district and private sector agencies active in the district.
- e) **Poverty Data:** this section provides predicted poverty rates for 2009 for all districts and communes and detailed poverty data compiled and processed by the ID Poor project for those that have been covered by this project.

The future

It is our hope that this is the start of a longer-term process. We hope that a next edition of these District Data Books will offer more comprehensive, correct and up-to-date information. We hope that the District Administrations will not only start using this information, but also improve and update it. For this they are all provided with the full data set in digital format.

We invite agencies, projects and experts to send reports, statistics and maps that could be used for a next version to us and we invite all users of the District Data Books to inform us about errors, updates and inconsistencies. Please contact us through info@ncdd.gov.kh

We now invite you to browse through this data book. You may open this randomly or use the table of contents and go to the aspects that have your special interest.

We hope that you will be informed, surprised and assisted. We hope, above all, that this information will lead to a deeper understanding of causes and effects of poverty, to purposeful decisions on how to tackle those causes and to greater transparency in using scarce resources for the benefit of all.

Martin de Graaf
Program Advisor, PSDD/NCD

SECTION A: GEOGRAPHY

1 Administration and Infrastructure

Please see separate folder containing A3 maps.

2 Land Use and Natural Resources

Please see separate folder containing A3 maps

3 Geography

3.1 Land Area

Total Land Area (ha)	Forest Land Area (ha)		Cultivation Land Area (ha)	Construction Land Area (ha)	Other Land Area (ha)
	Total	Flooded Forest Area			
98595	34946.3	2019	39524.9	11338.8	10766

3.2 Distances between Offices

Location	Distance (Km)
From District Office to C/S Office of Chamkar Luong	13
From District Office to C/S Office of Kampong Seila	11
From District Office to C/S Office of Ou Bak Roteh	1
From District Office to C/S Office of Stueng Chhay	29

SECTION B: DISTRICT PROFILE¹

¹ All data in this section come from the Commune Database (CDB) unless otherwise specified. These include primarily new CDB data, collected late 2008, and some data from earlier years. Please note that percentages are rounded to the nearest whole number.

1 General Information

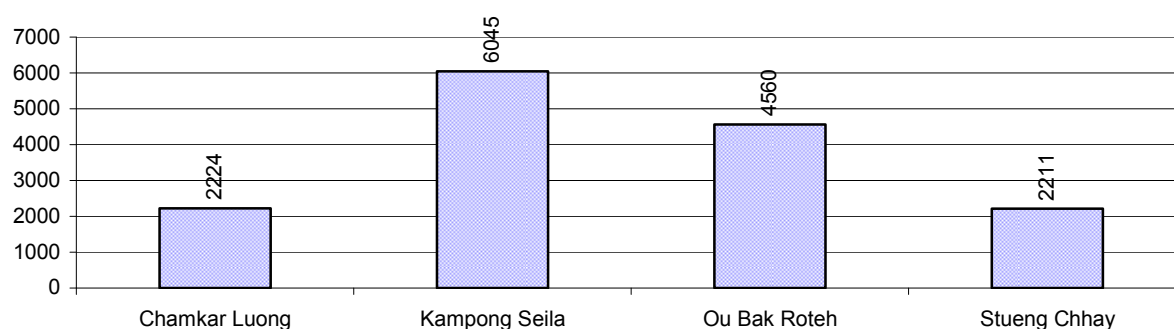
1.1 Population of the District

1.1.1 Total Population

Number of families	2005	2006	2007	2008
Total number of families	2,993 families	3,353 families	3,338 families	3,161 families
Increase (+)/Decrease (-) in nr of families		12%	0%	-5%
Total population	15,384 pers	18,370 pers	17,774 pers	15,040 pers
Increase (+)/Decrease (-) in nr of people		19%	-3%	-15%
Number of female Headed Households (HH)	392 families	704 families	739 families	392 families

Note: Percentages of population and increase/decrease are calculated on basis of the previous year. A negative sign in front of the percentage indicates a decrease in population.

1.1.2 Population, by Commune, in 2008



1.1.3 Population, by Age Group, over 3 years

Population by age group	2006	2007	2008	
	%	%	%	Number
Age 0-5 years (as percentage of the population)	15%	18%	13%	1,958 persons
Male 0-5 yrs	52%	50%	49%	953 persons
Female 0-5 yrs	48%	50%	51%	1,005 persons
Age 6-17 (as percentage of the population)	31%	33%	31%	4,602 persons
Male 6-17 yrs	54%	51%	50%	2,293 persons
Female 6-17 yrs	46%	49%	50%	2,309 persons
Age 18-60 (as percentage of the population)	50%	44%	52%	7,841 persons
Male 18-60 yrs	52%	49%	49%	3,872 persons
Female 18-60 yrs	48%	51%	51%	3,969 persons
Age 61 above (as percentage of the population)	4%	4%	4%	639 persons
Male 61	48%	46%	48%	305 persons
Female 61	52%	54%	52%	334 persons

Note: The overall percentage for each age group is calculated on the basis of the total population. The gender distribution of each group is calculated on the basis of the population within that particular age group.

1.2 Occupations

1.2.1 Percentage of families with a particular Occupation over 3 years

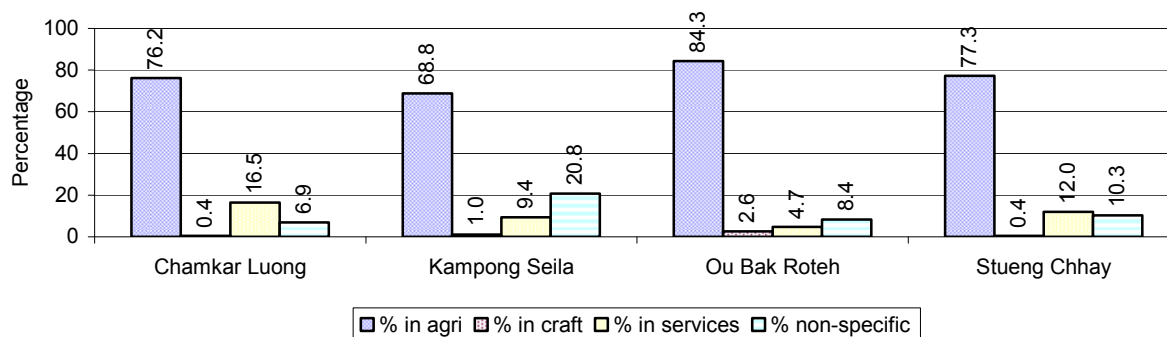
This table shows the percentage of the population who have a particular occupation (job), for example the percentage of the population in the district who are rice farmers, furniture crafter, trader, etc.

Description	2006	2007	2008	
	%	%	%	Number
Families whose main occupation is agriculture	71%	72%	76%	2,398 Families
Families whose primary occupation is rice farming	47%	36%	39%	1,244 Families
Families whose primary occupation is cultivating long-term crops	5%	14%	14%	453 Families
Families whose primary occupation is cultivating short-term crops	3%	6%	6%	185 Families
Families whose primary occupation is cultivating vegetable	3%	4%	3%	101 Families
Families whose primary occupation is fisherman	3%	2%	2%	62 Families
Families whose primary occupation is livestock farmer	3%	4%	4%	130 Families
Families whose primary occupation is NTFP collection	8%	6%	7%	223 Families
Families whose main occupation is craft work	1%	1%	1%	42 Families
Families, whose main occupation is in furniture craft, wooden, rattan, vine, bamboo	1%	1%	1%	26 Families
Families whose main occupation is in metal, aluminum, glass goods production	0%	0%	0%	1 Families
Families whose main occupation is food production	0%	0%	0%	9 Families
Families whose main occupation is tire, plastics and rubber goods production	0%	0%	0%	0 Families
Families whose main occupation is textile, clothing goods production	0%	0%	0%	3 Families
Families whose main occupation is in other production, not listed above	0%	0%	0%	3 Families
Families whose main occupation is services	8%	9%	9%	296 Families
Families whose main occupation is trade	3%	3%	4%	140 Families
Families whose main occupation is repair	1%	1%	1%	39 Families
Families whose main occupation is providing transport services	2%	4%	2%	65 Families
Families whose main occupation is providing other services	1%	1%	2%	52 Families
Families whose main occupation is not clear (or multi)	19%	18%	13%	425 Families

Note: The occupation percentages are calculated on the basis of the total number of families.

1.2.2 Percentage Families that work in one of four occupational sectors, by Commune in 2008

This table indicates the percentage of families involved in one of four occupation types: agriculture, craft, services or non-specific (other). Please note agriculture includes forestry activities such as cutting down trees and gathering gum from the trees.



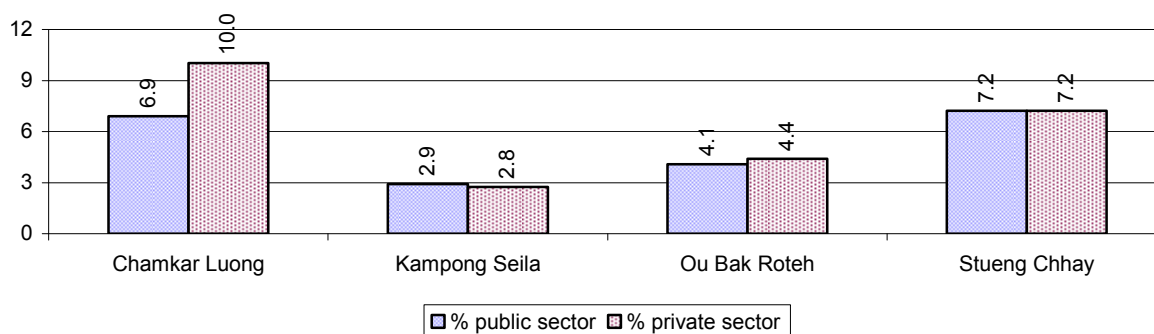
Note: Calculated on the basis of the total number of families within a commune.

1.2.3 Percentage of Families with public Sector, private Sector or uncertain Jobs, over 3 years

Description	2006	2007	2008	
	%	%	%	Number
Families that have a family member who is a government official, staff or worker	4%	3%	4%	142 families
Families that have a family member who is a private sector staff or worker	4%	3%	5%	157 families
Number of people aged 18-60 with uncertain/irregular jobs	19%	14%	11%	829 persons

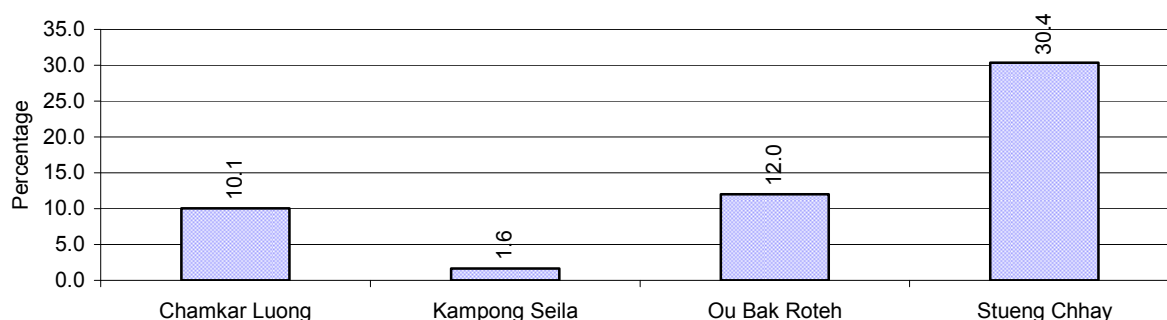
Note: In the first two rows percentages are calculated on the basis of the total number of families. In the third row the percentage is calculated on the basis of the total number of people aged 18-60 years.

1.2.4 Percentage of Families with public or private Sector Jobs, by Commune in 2008



Note: Calculated on the basis of the total number of families in the commune

1.2.5 Percentage of People aged 18-60 years with uncertain/irregular Jobs, by Commune, in 2008.



1.3 Property

1.3.1 Housing types and facilities over 3 years

This table shows the percentage of people living in a certain type of house. It also indicates how many houses have electricity or battery powered lights and how many have TV.

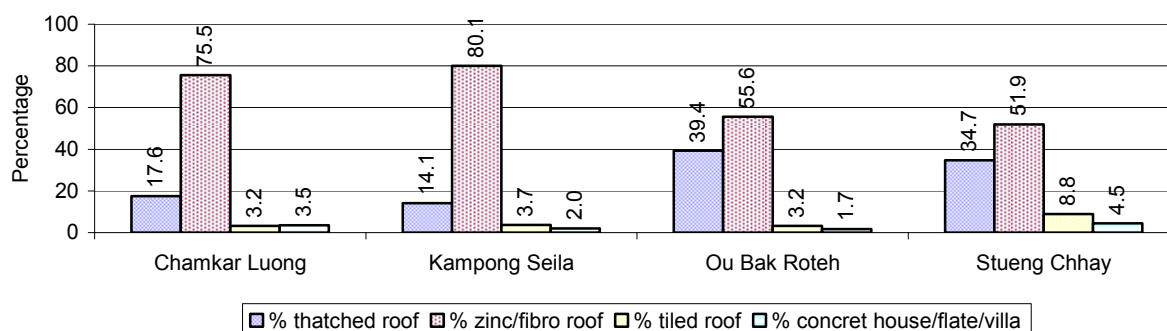
House Type	2006 %	2007 %	2008	
			%	Number
House with thatched roof	37 %	30 %	25 %	712 houses
House with zinc/fibro roof	59 %	65 %	68 %	1,930 houses
House with tiled roof	3 %	4 %	4 %	121 houses
Flats/apartments (with many families living)	0 %	0 %	0 %	5 houses
Concrete house or flat (with one family living)	1 %	1 %	2 %	68 houses
Villa house	0 %	0 %	0 %	1 houses
Houses with electricity	11 %	16 %	21 %	588 houses
Houses with battery light	55 %	56 %	67 %	1,899 houses
Houses with TV	40 %	38 %	36 %	1,011 houses

Note: Calculated against the total number of houses

1.3.2 Families living on public Land or without a permanent House

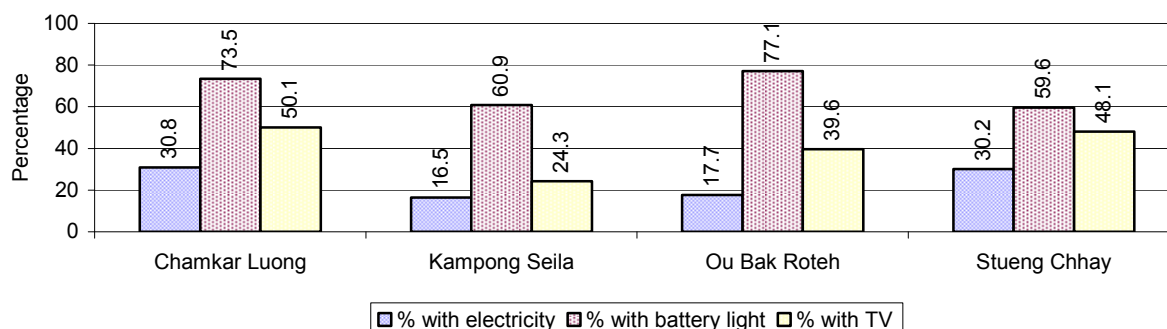
Living situation	2006	2007	2008
Families living in a house on public land	51 families	119 families	42 families
People, without permanent housing	71 person(s)	162 person(s)	74 person(s)

1.3.3 Percentage of Population living in a particular type of House, by Commune, in 2008



Note: Calculated against the total number of houses in each commune

1.3.4 Percentage of Houses with Electricity, Battery Lights and/or TVs, by Commune, in 2008



Note: Calculated against the total number of houses in each commune

1.3.5 Types of Vehicles and their ratio to Families across 3 years

This table shows the number of families per vehicle in the district. The last column shows the total number of each type of vehicle in the district for 2008.

Description	2006 ratio	2007 ratio	2008	
			Ratio	Number
Bicycle and bicycle with trailer	4	5	5	579
Ox-carts and horse-carts	6	6	4	765
Motorbike/with trailer	4	4	3	967
Motor tri-cycle	N/A	N/A	N/A	0
Large Transportation				
Total number of cars/trucks	23	18	19	170
Locally made vehicles	1,677	1,113	3,161	1
Trucks for goods transport	80	79	109	29
Buses/mini buses for passengers	62	42	49	65
Family cars	71	56	42	75
Agriculture machinery				
Tractors used for plowing	240	152	198	16
Power-tillage used for plowing	124	95	81	39
Other type of machinery				
Other type of machinery	559	835	1,581	2
Water transportation				
Row boats	53	45	39	82
Total number of motor boats				
Motor boats used for fishing	93	185	176	18
Motor boats used for passengers	N/A	N/A	N/A	0
Motor boats used for goods transporting	N/A	N/A	N/A	0

Note: Ratio of families to a particular type of vehicle is the result of the total number of families divided by total number of that type of vehicle. Other types of vehicles, such as bulldozer, excavator, rollers etc. are not listed.

2 Infrastructure and Economy

2.1 Roads in meters over 3 years

Description	2006	2007	2008
Bituminous road	22,000 m	2,200 m	0 m
DBST, Macadam road	0 m	0 m	0 m
Concrete road	0 m	0 m	0 m
Laterite road	27,690 m	47,532 m	37,943 m
Constructed earth road	2,848 m	19,000 m	9,500 m
Un-constructed earth road	29,500 m	30,050 m	7,205 m

2.2 Sewerage Pipes in meters over 3 years

Description	Sewage pipe length		
	2006	2007	2008
Total length of sewage pipe, diameter 30-50 cm	0 m	40 m	56 m
Length of newly constructed sewage pipe, diameter 30-50 cm	1 m	21 m	25 m
Length of sewage pipe, diameter 30-50 cm needs repair/rehabilitation	0 m	0 m	10 m
Total length of sewage pipe, diameter of pipe 60-100 cm	72 m	18 m	544 m
Length of newly constructed sewage pipe, diameter 60-100 cm	1 m	19 m	25 m
Length of sewage pipe, diameter 60-100 cm needs repair/rehabilitation	0 m	0 m	20 m
Sewage pipe, diameter of pipe over 100 cm	0 m	0 m	10 m
Length of newly constructed sewage pipe, diameter over 100 cm	1 m	1 m	5 m
Length of sewage pipe, diameter over 100 cm needs repair/rehabilitation	0 m	0 m	0 m

2.3 Drainage and Bridges

Construction Type	2006		2007		2008	
	place(s)	Length	place(s)	Length	place(s)	Length
Single pipe culvert	21	137m	41	267 m	41	328 m
Double-pipe culvert	1	5m	9	62 m	14	89 m
Box pipe culvert	3	15m	6	35m	11	56 m
Wooden bridge	2	44m	11	229m	11	119 m
Concrete bridge	2	38m	2	591m	2	20 m
Bale bridge	4	90m	6	193m	5	132 m
Spillway construction	0	0m	0	0m	1	15 m

2.4 Services in the District

Descriptions	Number of places by year		
	2006	2007	2008
Public			
Electricity generating stations	4	5	5
Health clinics	0	0	0
Private			
Bicycle and motorcycle repair places	8	23	24
Agricultural machinery, tools and equipment repair places	1	2	2
Electronic tool repair places	3	3	3
Battery-charging services	18	15	16
Handicraft places, wooden furniture and forest by-products	8	19	18
Other handicraft places (excluding furniture)	10	2	2
Small-scale services (hairstylist, phone service, massage,	24	19	15

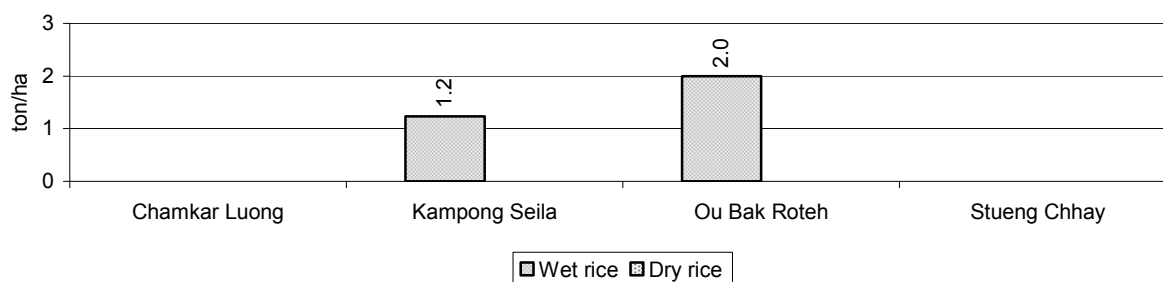
Descriptions	Number of places by year		
	2006	2007	2008
Karaoke, etc)			
Small-scale food shop businesses (Food, groceries, drink shop, etc)	20	29	23
Small-scale rice mills	21	41	40
Medium or large-scale rice mills	0	0	0
Small-scale markets	4	4	4
Large-scale market	0	0	0
Alcohol refinery places	11	22	26
Pharmacies and small drug stores	2	0	0
Hotels	0	0	0
Guest houses	0	0	0
Restaurants	0	0	0
Gasoline stations	1	1	1

2.5 Agriculture

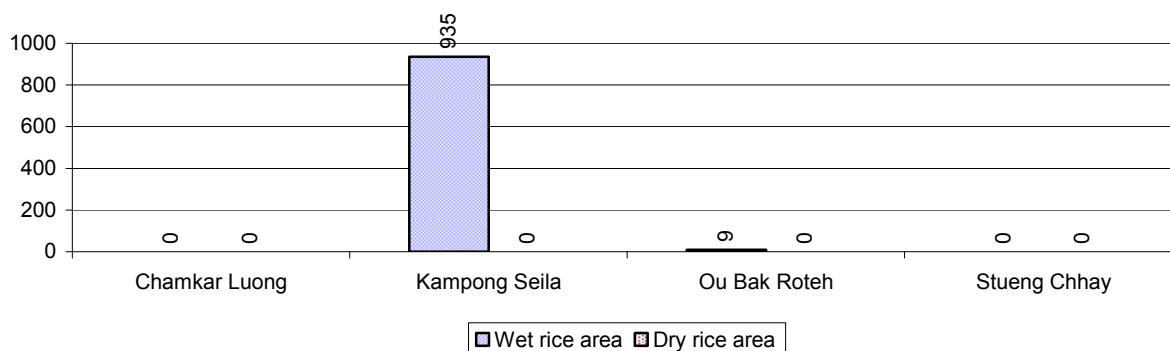
2.5.1 Rice cultivation in the District over 3 years

Description	2006	2007	2008
Total dry rice land area	0 ha	0 ha	0 ha
Actual dry rice cultivation area	0 ha	0 ha	0 ha
% actual cultivation to total land	-%	-%	-%
Total dry rice production	- tonne(s)	- tonne(s)	- tonne(s)
Average dry rice yield	- tonne(s)/ha	- tonne(s)/ha	- tonne(s)/ha
Total wet rice land area	1,786 ha	1,617 ha	1,402 ha
Actual wet rice cultivation area	1,360 ha	1,103 ha	944 ha
% actual cultivation to total land	76 %	68%	67%
Total wet rice production	2,040.00 tonne(s)	1,342.90 tonne(s)	1,524.56 tonne(s)
Average wet rice yield	1.5 tonne(s)/ha	1.2 tonne(s)/ha	1.6 tonne(s)/ha
Total intensive rice land area	190 ha	1,145 ha	13 ha
Actual intensive rice cultivation area	- ha	2,380 ha	26 ha
Average intensive rice yield	- tonne(s)/ha	1.5 tonne(s)/ha	2.0 tonne(s)/ha
Actual upland rice cultivation area	141 ha	219 ha	177 ha
Total upland rice production	127 tonne(s)	219 tonne(s)	190 tonne(s)
Average upland rice yield	0.9 tonne(s)/ha	1.0 tonne(s)/ha	1.1 tonne(s)/ha

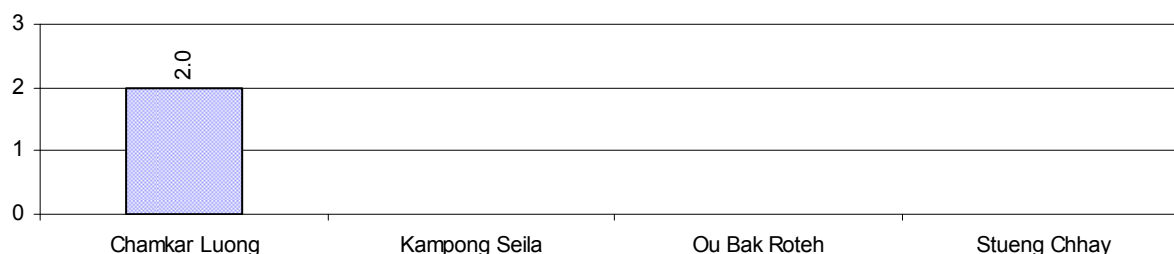
2.5.2 Estimated wet and dry Season Rice Yield in tonne(s)/Ha, by Commune, in 2008



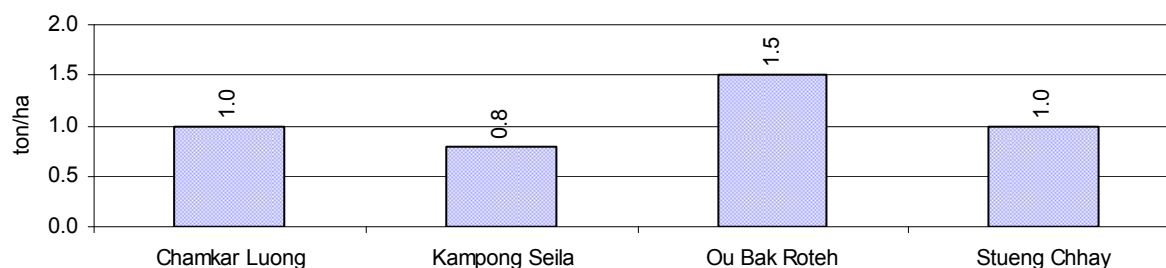
2.5.3 Cultivated wet and dry Season Rice areas in Ha, by Commune, in 2008



2.5.4 Estimated intensive Rice Yields in tonnes/Ha, by Commune, for 2008



2.5.5 Estimated upland Rice Yield in tonnes/Ha, by Commune, for 2008

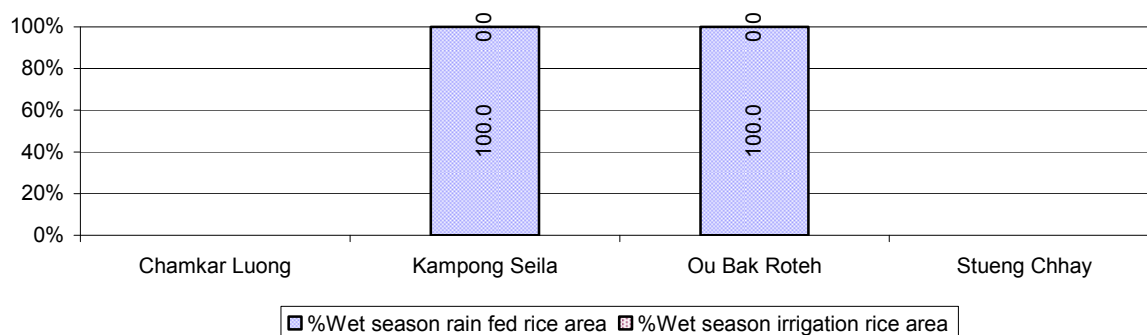


2.5.6 Wet season Rice irrigation across 3 years

Description		2006 %	2007 %	2008	
				%	Number
Total area of wet season rain fed rice land		100%	89%	100 %	944 ha
Percentage of wet season rice land that is irrigated; and for 2008 area in Ha		2 %	11 %	0 %	0 ha
Where	Area irrigated from canal/dam	0 %	100 %	- %	0 ha
	Area irrigated from river, stream, lake, natural pond	0 %	0 %	- %	0 ha
	Area irrigated from drilled well	0 %	0 %	- %	0 ha
	Area irrigated from dug pond	0 %	0 %	- %	0 ha

2.5.7 Water sources for wet Season Rice Cultivation, by Commune, in 2008

This chart shows the percentage of wet season rice cultivation receiving water from rain (natural) and from irrigation.



2.5.8 Access to Irrigation

Description	2006 %	2007 %	2008	
			%	Number
Families who have access to irrigation water	0%	3%	0%	0 families
Families who have irrigation wells	1%	2%	0%	5 families

Note: Calculated against the total number of families are rice farmers

2.5.9 Number of Irrigation Wells over 3 years

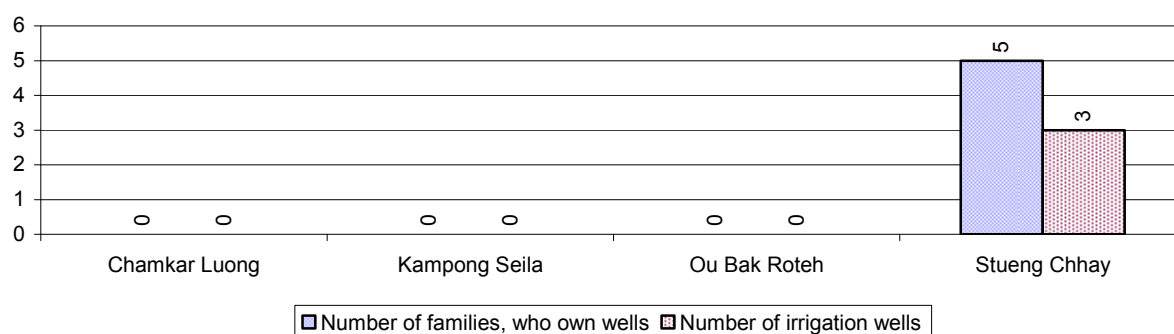
Description	2006	2007	2008
Number of irrigation wells	6 wells	142 wells	3 wells

2.5.10 Percentage of Families with access to (supplemental) Irrigation for wet Season Rice cultivation, by Commune, in 2008

There are no families with access to supplemental irrigation for wet season rice irrigation in this District in 2008

Note: % of families, with access to irrigation is calculated against the total number of families, whose main occupation is rice farming. Irrigated wet rice land area is calculated against the total actual wet rice land cultivated areas

2.5.11 Irrigation Wells, by Commune, in 2008

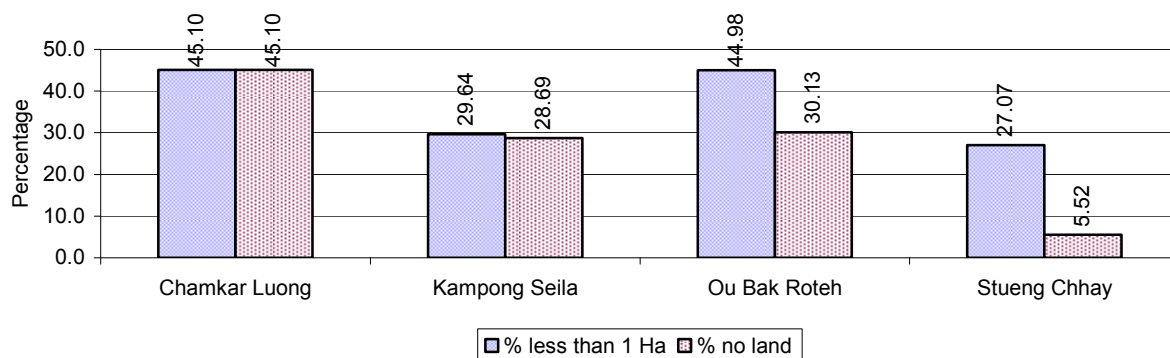


2.5.12 Farmers owning less than one hectare of Rice Land

Description	2006 %	2007 %	2008	
			%	Number
Families who have less than one hectare of rice land	29%	18%	33%	415 families
Families who do not own any rice land	23%	14%	27%	335 families

Note: Calculated on basis of total number of families who are rice farming

2.5.13 Percentage of Farmers with less than one Hectare or no Rice Land, by Commune, in 2008

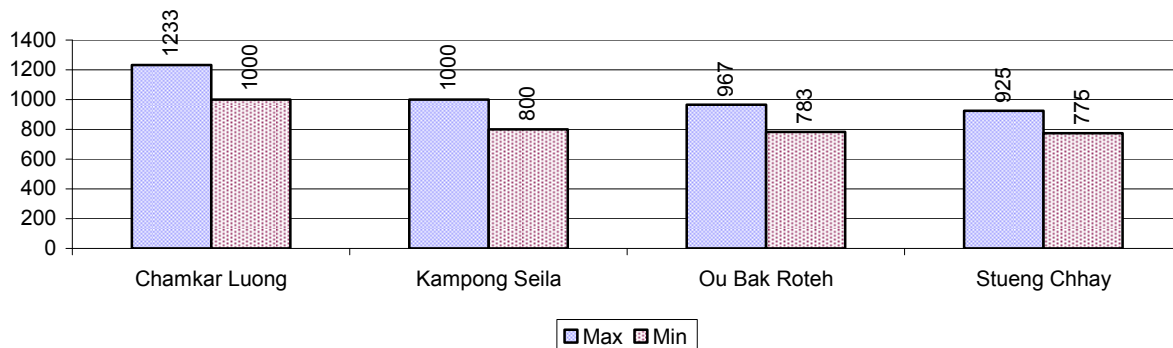


Note: Calculated on basis of total number of families who are rice farming

2.5.14 Average farm-gate Prices of Rice, over 3 years

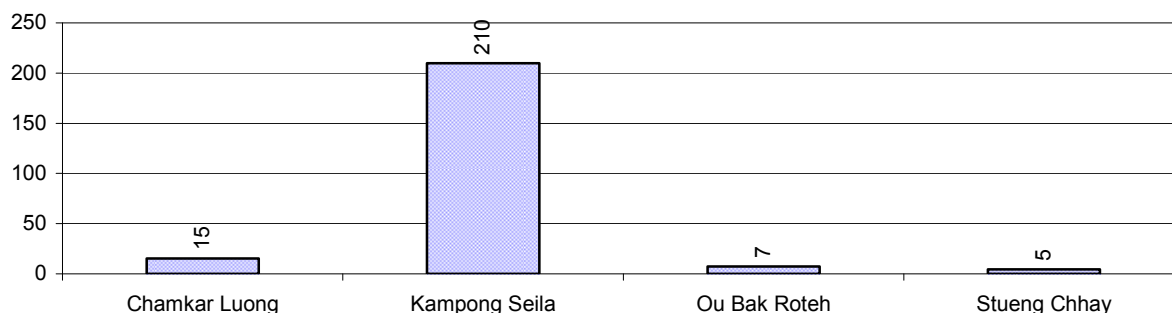
Description	2006	2007	2008
Maximum average farm gate price	560 Riels/Kg	775 Riels/Kg	1,031 Riels/Kg
Minimum average farm gate price	443 Riels/Kg	550 Riels/Kg	840 Riels/Kg
Average farm gate price	502 Riels/Kg	663 Riels/Kg	935 Riels/Kg
Average rice production per person	128 Kg/person	222 Kg/person	116 Kg/person

2.5.15 Minimum and maximum farm-gate Prices of Rice in Riel/kg, by Commune, in 2008



2.5.16 Production of Paddy in Kgs/Person, by Commune, in 2008

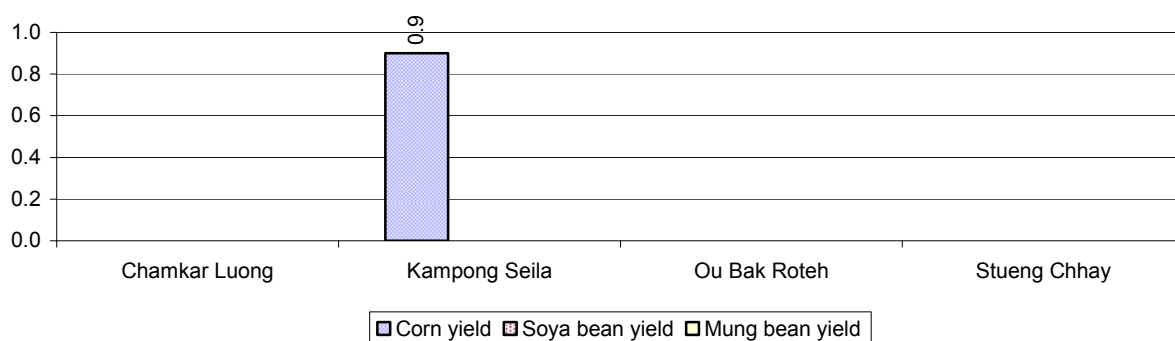
This table shows how much paddy (harvested rice) is produced in a year in a commune, in kgs per person.



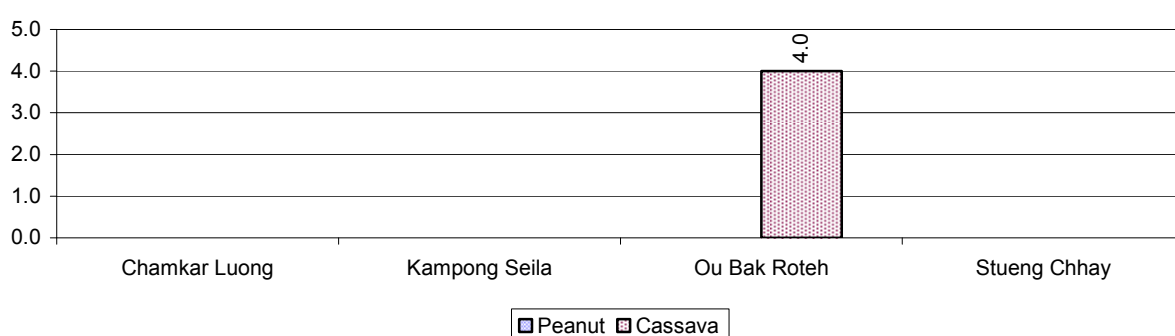
2.5.17 Production of other Crops, over 3 years

Crops	2006	2007	2008
Corn cultivation area	0 ha	3 ha	6 ha
Estimated corn yield	- tonne(s)/ha	0.9 tonne(s)/ha	0.9 tonne(s)/ha
Estimated corn production	- tonne(s)	3 tonne(s)	5 tonne(s)
Soya bean cultivation area	0 ha	0 ha	0 ha
Estimated Soya bean yield	- tonne(s)/ha	- tonne(s)/ha	- tonne(s)/ha
Estimated Soya bean production	- tonne(s)	- tonne(s)	- tonne(s)
Mungbean cultivation area	0 ha	0 ha	0 ha
Estimated Mungbean yield	- tonne(s)/ha	- tonne(s)/ha	- tonne(s)/ha
Estimated Mungbean production	- tonne(s)	- tonne(s)	- tonne(s)
Peanut cultivation area	0 ha	0 ha	0 ha
Estimated Peanut yield	- tonne(s)/ha	- tonne(s)/ha	- tonne(s)/ha
Estimated Peanut production	- tonne(s)	- tonne(s)	- tonne(s)
Cassava cultivation area	0 ha	0 ha	5 ha
Estimated Cassava yield	- tonne(s)/ha	- tonne(s)/ha	4.0 tonne(s)/ha
Estimated Cassava production	- tonne(s)	- tonne(s)	20 tonne(s)
Sweet potatoes cultivation area	0 ha	0 ha	0 ha
Estimated Sweet potatoes yield	- tonne(s)/ha	- tonne(s)/ha	- tonne(s)/ha
Estimated Sweet potatoes production	- tonne(s)	- tonne(s)	- tonne(s)
Sesame cultivation area	0 ha	0 ha	0 ha
Estimated Sesame yield	- tonne(s)/ha	- tonne(s)/ha	- tonne(s)/ha
Estimated Sesame production	- tonne(s)	- tonne(s)	- tonne(s)

2.5.18 Yields of Corn, Soya beans and Mungbeans in tonne(s)/ha, by Commune, in 2008



2.5.19 Yields of Peanuts and Cassava in tonne(s)/ha by Commune, in 2008



2.5.20 Yields of Sweet Potatoes and Sesame in tonne(s)/ha, by Commune, in 2008

There were no yields for any of these crops in this District in 2008

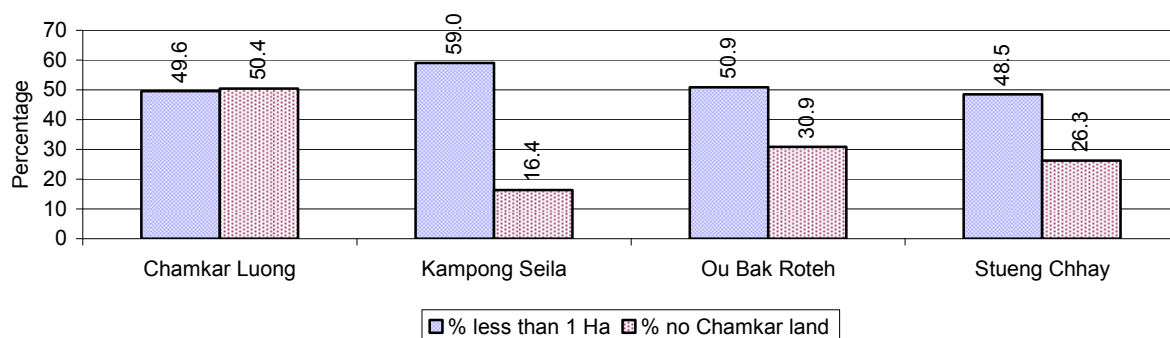
2.5.21 Percentage Farmers who own less than 1 Ha or no Chamkar land

Description	2006	2007	2008	
	%	%	%	Number
Families, who own less than 1ha of Chamkar land	42%	6%	51%	377 families
Families, with no Chamkar land	39%	13%	32%	238 families

Note 1: Calculated as a percentage of the total number of families whose main occupation is Chamkar (not rice) farming

Note 2: Chamkar land is no-rice land, i.e. other crops

2.5.22 Percentage Farmers owning less than 1 ha or no Chamkar land, by Commune, in 2008



Note: Percentage is calculated among families, who Chamkar farm as a main occupation, not the total population of the commune.

2.5.23 Percentage of Families raising Cattle/Buffalo, over 3 years

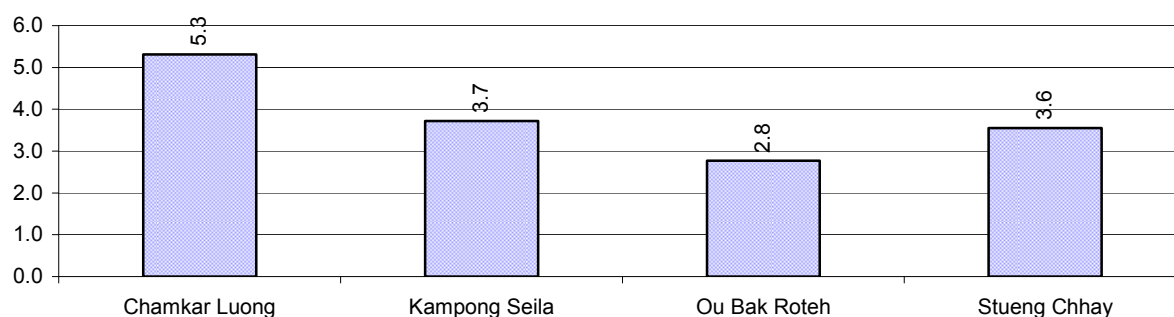
Description	2006 %	2007 %	2008	
			%	Number
Families raising cattle/buffalo	39%	38%	40%	1,269 families
Families raising cattle/buffalo as labor forces	29%	31%	33%	1,034 families

Note: Calculated against the total number of families.

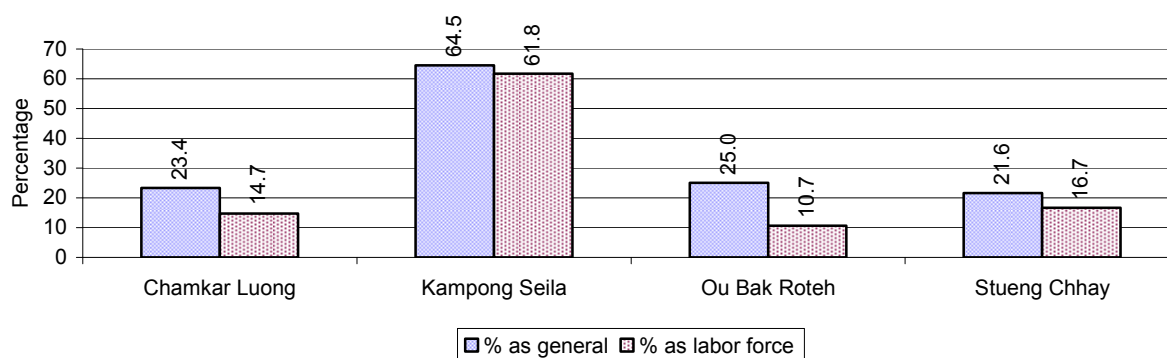
2.5.24 Number of Cattle/buffalo being raised, over 3 years

Description	2006	2007	2008
Total number of cattle/buffalo	3,618 head(s)	5,169 head(s)	4,643 head(s)
Average cattle/buffalo per families	2.8 head(s)/families	4.1 head(s)/families	4 head(s)/families

Note: Calculated by dividing total number of cattle/buffalo by total number of cattle/buffalo raising families

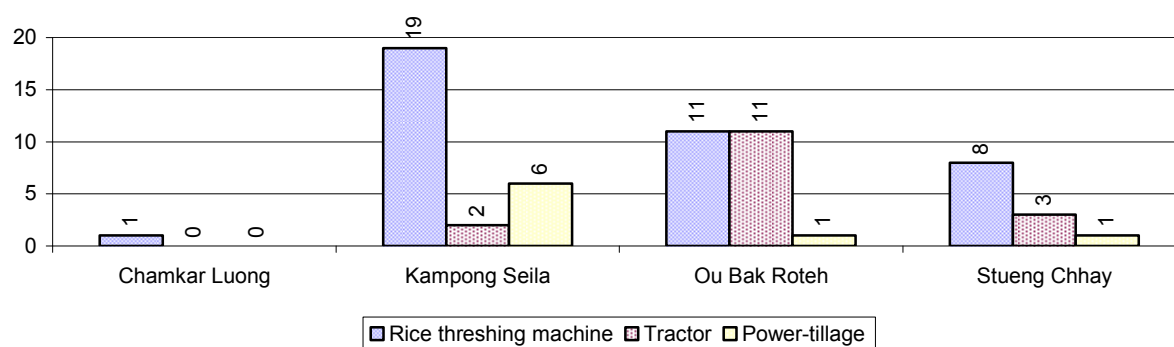
2.5.25 Average number of Cattle/Buffalo per Family, by Commune, in 2008

Note: Calculated by dividing total number of cattle/buffalo by total number of cattle/buffalo raising families

2.5.26 Percentage Families raising Cattle/Buffalo, for general and labor purposes in 2008, by Commune

Note: Calculated using the total number of families raising cattle/buffalo against the total number of families.

2.5.27 Type and number of agricultural Machines, by Commune, in 2008

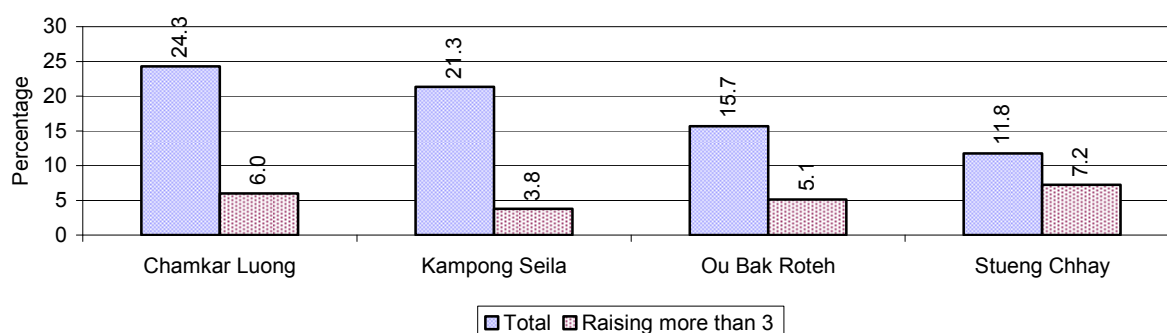


2.5.28 Livestock-producing Households over 3 years

Description	2006 %	2007 %	2008	
			%	Number
Total number of families raising pigs	25%	21%	19%	587 families
number of families raising more than 3 pigs	4%	5%	5%	159 families
Total number of families raising chickens	62%	62%	73%	2,316 families
number of families raising more than 3 chickens	53%	54%	66%	2,096 families
Total number of families raising ducks	6%	6%	7%	208 families
number of families raising more than 5 ducks	3%	4%	4%	118 families
Total number of families raising goats or sheep	0%	0%	0%	4 families
Total number of families raising horses	0%	0%	0%	2 families

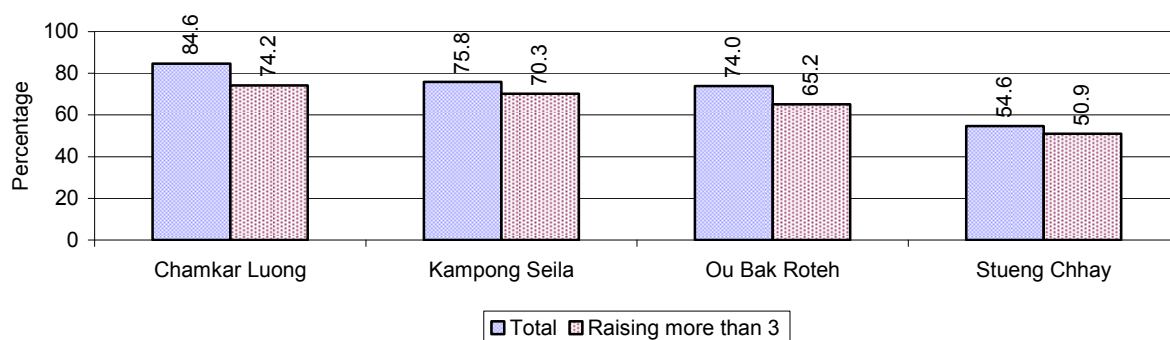
Note: Calculated against the total number of families

2.5.29 Percentage Families raising Pigs, by Commune, in 2008



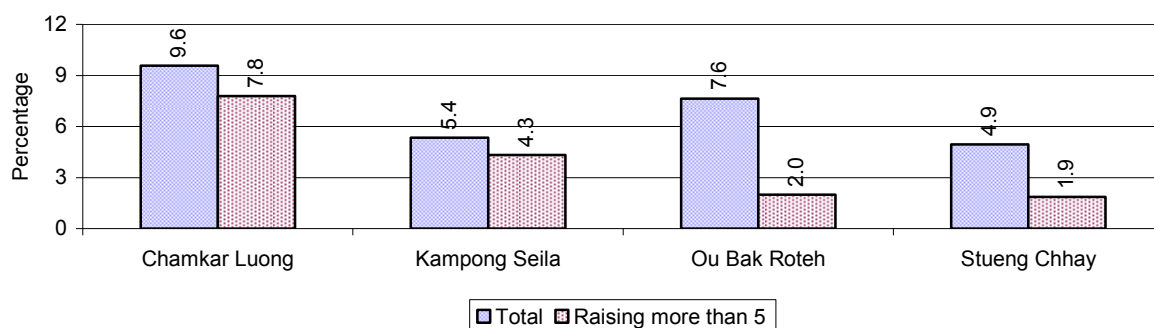
Note: Calculated against the total number of families in the commune

2.5.30 Percentage Families raising Chickens, by Commune, in 2008



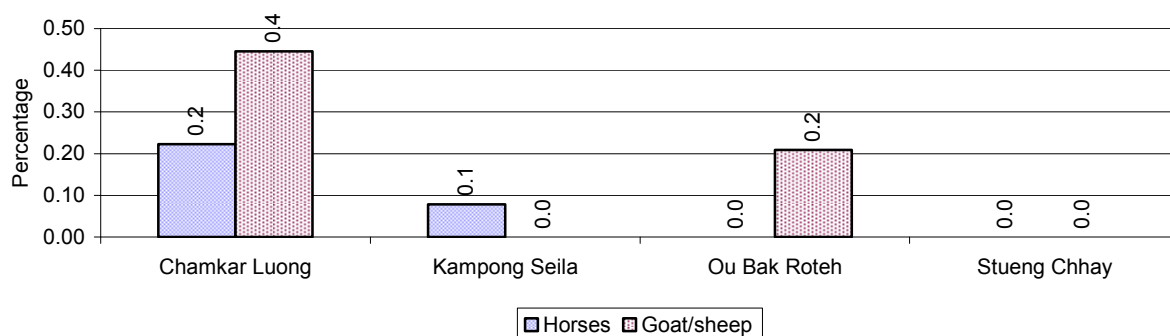
Note: Calculated against the total number of families in the commune

2.5.31 Percentage Families raising Ducks, by Commune, in 2008



Note: Calculated against the total number of families in the commune

2.5.32 Percentage Families raising Horses, Goats or Sheep, by Commune, in 2008

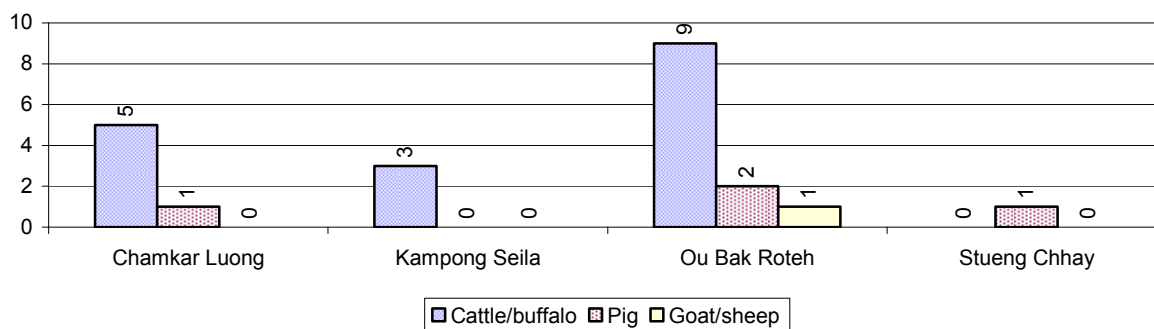


Note: Calculated against the total number of families in the commune

2.5.33 Livestock Farms over 3 years

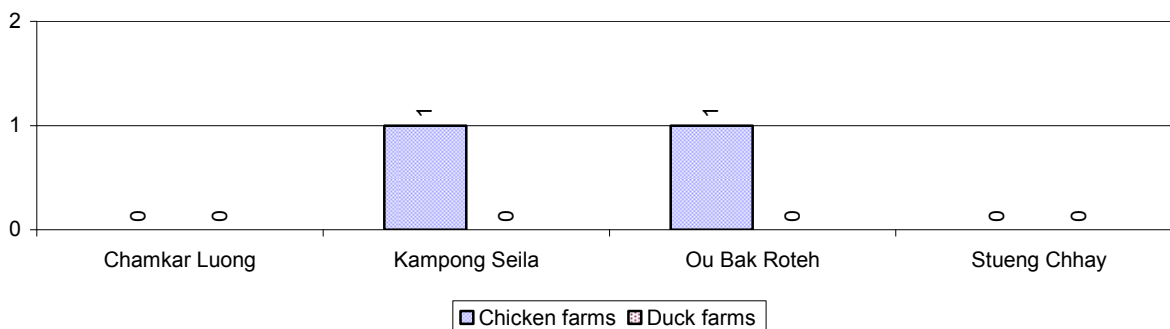
Description	2006	2007	2008
Number of cattle/buffalo farms	11 farm(s)	17 farm(s)	17 farm(s)
Number of pig farms	14 farm(s)	11 farm(s)	4 farm(s)
Number of goat/sheep farms	1 farm(s)	1 farm(s)	1 farm(s)
Number of chicken farms	1 farm(s)	1 farm(s)	2 farm(s)
Number of duck farms	0 farm(s)	0 farm(s)	0 farm(s)

2.5.34 Number Livestock Farms, by Commune in 2008



Note: Number of farms are recorded by the village chief, not by counting number of livestock in each farm

2.5.35 Number Chicken and Duck Farms, by Commune, for 2008



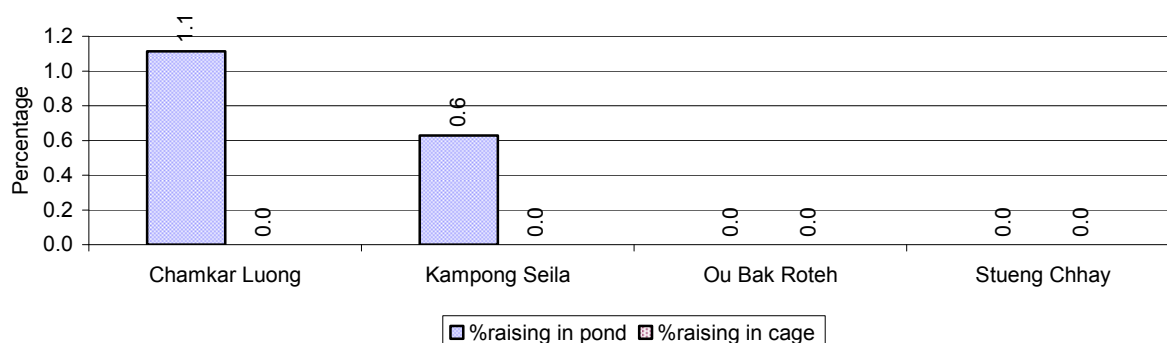
Note: Number of farm places recorded by village chief, not by counting number of livestock in each farm

2.5.36 Families raising Fish over 3 years

Description	2006	2007	2008
Total number of families raising fish	10 families	14 families	13 families
% families raising fish	0%	0%	0%
Number families raising fish in pond	10 families	14 families	13 families
% families raising fish in pond	0%	0%	0%
Number fish pond	11 pond(s)	18 pond(s)	13 pond(s)
No. of ponds per family	1.1 pond/families	1.3 pond/families	1.0 pond/families
Number of families raising fish in cage	0 families	0 families	0 families
%families raising fish in cage	0%	0%	0%
Number of fish cage	0 cage(s)	0 cage(s)	0 cage(s)
No. of fish cage per family	- cage /families	- cage /families	- cage /families

Note: % of families raising fish or fish in ponds or cages is calculated a percentage of the total number of families.

2.5.37 Percentage of Families raising Fish, by Commune, in 2008



Note: Calculated as a percentage of the total number of families in the commune.

2.5.38 Shrimp and Prawn Farming over 3 years

Description	2006	2007	2008
Number of families raising shrimps	0 families	0 families	0 families
% Families raising shrimps	0%	0%	0%
Number of shrimp ponds	0 pond	0 pond	0 pond
Total area raising shrimps	0 ha	0 ha	0 ha
Area per family	-ha/families	-ha/families	-ha/families
Number of families raising prawns	0 families	0 families	0 families
% families raising prawns	0%	0%	0%
Number prawn ponds	0 pond	0 pond	0 pond
Ponds per families	- pond/families	-pond/families	-pond/families
Number of prawn cages	0 cage	0 cage	0 cage
Cages per families	0 cage /families	0 cage /families	0 cage /families

Note: Percentage of families raising either prawns or shrimp is calculated against the number of families, who do aquaculture farming, NOT the total population.

2.5.39 Numbers of Families raising Shrimps and number of Shrimp Ponds, by Commune, in 2008

There were none of these in this District in 2008

2.5.40 Number of Families raising Prawn and Number of Prawn Ponds/Cages, by Commune, in 2008

There were none of these in this District in 2008

3 Social Aspects

3.1 Education

3.1.1 Kindergarten in the District over 3 years

Description	2006	2007	2008
Number of community kindergarten schools	0 school(s)	1 school(s)	0 school(s)
Number of community kindergarten class rooms	0 room(s)	1 room(s)	0 room(s)
Number of community kindergarten classes	0 class(es)	1 class(es)	0 class(es)
Number of community kindergarten teachers	0 person(s)	1 person(s)	0 person(s)
Number of women community kindergarten teachers	0 women	1 women	0 women
Number of state and private kindergarten schools	0 school(s)	0 school(s)	0 school(s)
Number of state and private kindergarten class rooms	0 room(s)	0 room(s)	0 room(s)
Number of state and private kindergarten classes	0 class(es)	0 class(es)	0 class(es)
Number of state and private kindergarten teachers	0 person(s)	0 person(s)	0 person(s)
Number of women state and private kindergarten teachers	0 women	0 women	0 women

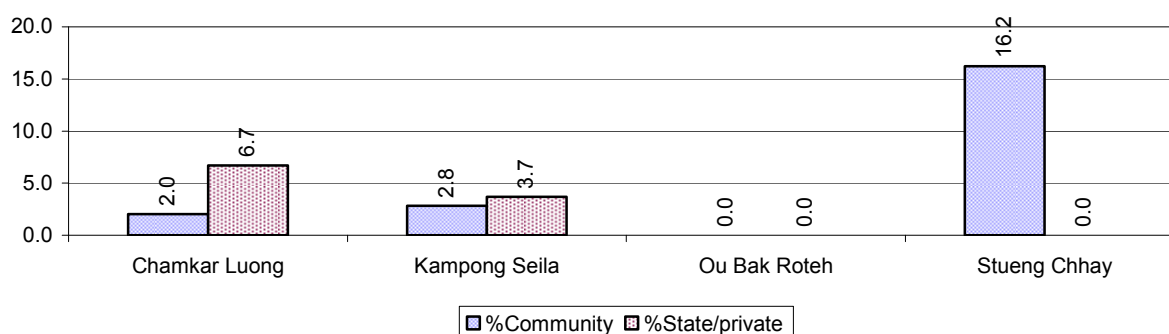
3.1.2 Percentage enrolment at Kindergarten level over 3 years

This table shows the percentage of the total 3-5 year old population attending kindergarten.

Description	2006 %	2007 %	2008	
			%	Number
Total percentage of children, 3-5 yrs, go to kindergarten	9%	46%	6%	67 person(s)
Percentage of children, 3-5 yrs, go community kindergarten	2%	2%	4%	40 person(s)
Percentage children, 3-5 yrs, go state/private kindergarten	7%	44%	2%	27 person(s)

Note: Calculated against the total for that age group

3.1.3 Percentage of Children 3-5 yrs attending Kindergarten, by Commune, in 2008



3.1.4 Basic Education over 3 years

Primary School

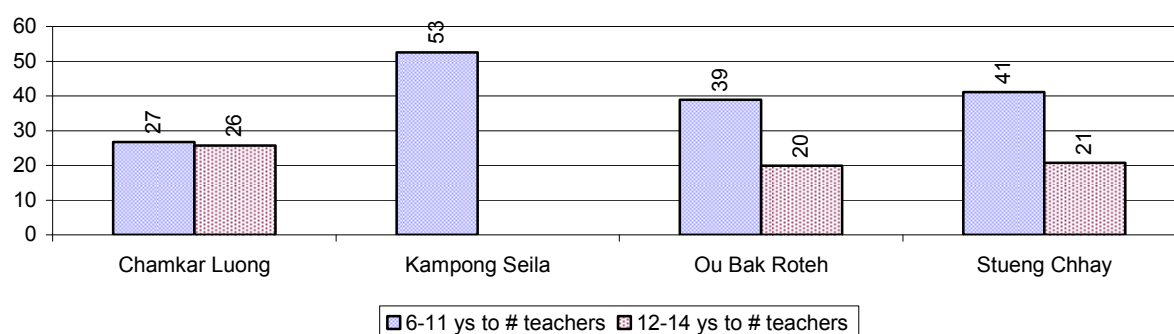
Description	2006	2007	2008
Number of primary schools	13 school(s)	13 school(s)	14 school(s)
Number of primary school rooms	69 room(s)	73 room(s)	83 room(s)
Number of primary classes	102 class(es)	102 class(es)	119 class(es)
Number of primary teachers	66 person(s)	62 person(s)	51 person(s)
Ratio of children 6-11 yrs to school	210	227	147
Ratio of children 6-11 yrs to school room	39	40	25
Ratio of children 6-11 yrs to class	27	29	17
Ratio of children 6-11 yrs to teacher	41	48	40

Note: According to education norm, children 6-11 yrs should attend primary school, while 12-14 yrs should be in lower secondary school, but in reality this varies.

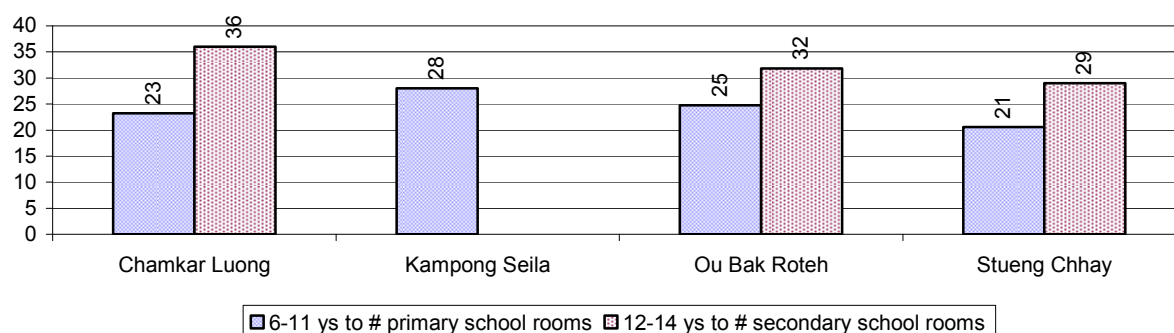
Lower Secondary School

Description	2006	2007	2008
Number of lower secondary schools	4 school(s)	4 school(s)	4 school(s)
Number of lower secondary school rooms	22 room(s)	17 room(s)	20 room(s)
Number of lower secondary classes	16 class(es)	13 class(es)	14 class(es)
Number of lower secondary teachers	23 person(s)	37 person(s)	30 person(s)
Ratio children 12-14 yrs to school	407	375	295
Ratio of children 12-14 yrs to school room	74	88	59
Ratio of children 12-14 yrs to class	102	115	84
Ratio of children 12-14 yrs to teacher	71	40	39

3.1.5 Ratio of 6-11 year old and 12-14 year old Children to number of Teachers, by Commune, in 2008



3.1.6 Ratio of 6-11 year old and 12-14 year old Children to number of School Rooms, by Commune, in 2008



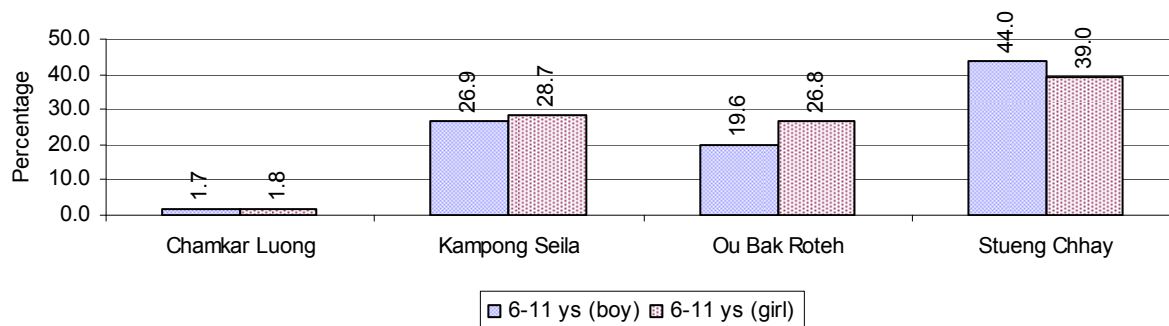
3.1.7 Enrolment status at Primary Level over 3 years

Description	2006 %	2007 %	2008	
			%	Number
Total children aged 6-11 years old	15%	17%	14%	2,063 person(s)
Total children aged 6-11 who are in school	62%	78%	76%	1,560 person(s)
Total children aged 6-11 who are not in school	38%	22%	24%	503 person(s)
Total girls aged 6-11 years old	15%	16%	13%	1,026 person(s)
Total girls aged 6-11 who are in school	60%	78%	75%	767 person(s)
Total girls aged 6-11 who are not in school	40%	22%	25%	259 person(s)
Total boys aged 6-11 years old	15%	17%	14%	1,037 person(s)
Total boys aged 6-11 who are in school	64%	79%	76%	793 person(s)
Total boys aged 6-11 who are not in school	36%	21%	24%	244 person(s)

Note 1: Percentage is calculated on the basis of the total number of children within 6-11 year age group for the first 3 rows and for the total girls and the total boys aged 6-11 yrs.

Note 2: Number of girls aged 6-11 who are in & not in school is calculated against the total number of girls aged 6-11 yrs. Number boys, 6-11 yrs who are in & not in school are calculated against the total number of boys aged 6-11 yrs.

3.1.8 Percentage of 6-11 year old Children not in School, by Commune, in 2008



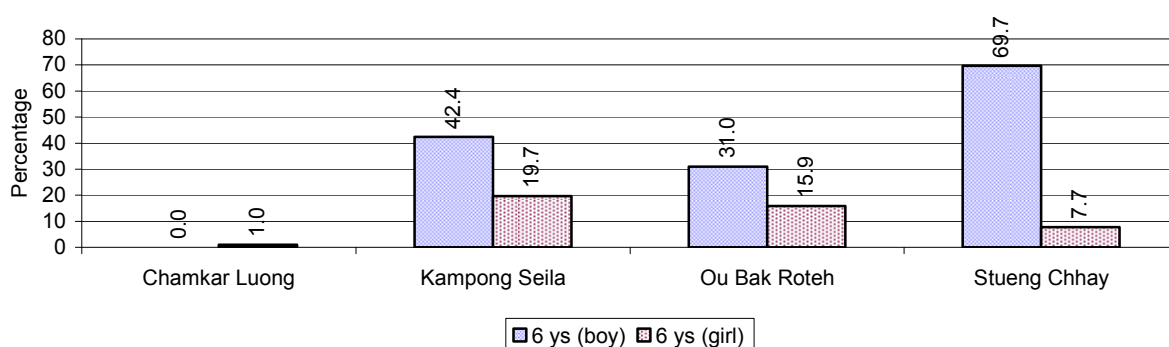
Note: calculated on the basis of the total number of children within 6-11 year age group in the commune.

3.1.9 Enrolment of 6 year old Children over 3 years

Description	2006 %	2007 %	2008	
			%	Number
Total % and number of children aged 6 years old	4%	6%	3%	491 person(s)
Total % of children aged 6 years old in school	50%	80%	62%	306 person(s)
Total % of children aged 6 years old not in school	50%	20%	38%	185 person(s)

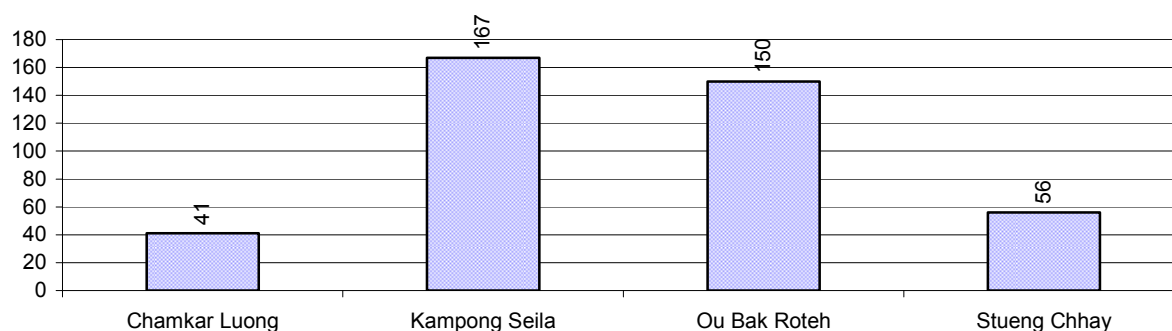
Note: First row calculated as a percentage of total population. Second and third row calculated as a percentage of the total number of 6 year olds.

3.1.10 Percentage of 6 year old Children not in School, by Commune, in 2008



Note: Calculated as a percentage of total 6 year old population

3.1.11 Number of 5 year old Children in each Commune in 2008

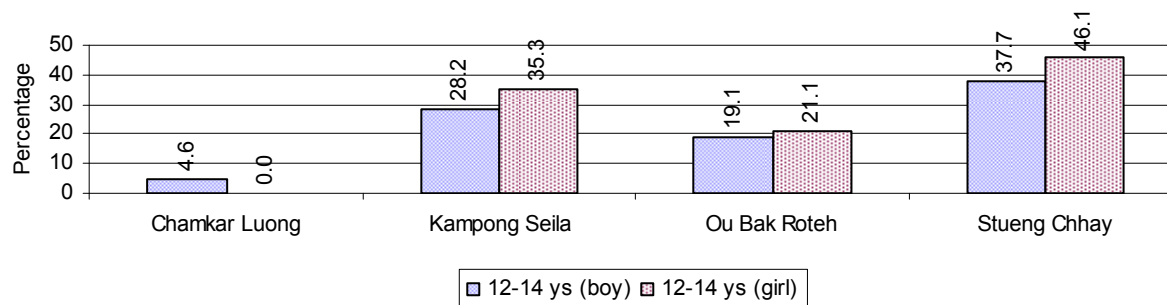


3.1.12 Enrolment at Lower Secondary Level over 3 years

Description	2006 %	2007 %	2008	
			%	Number
Total children aged 12-14 years old	9%	8%	8%	1,180 person(s)
Children aged 12-14 years old in school	65%	79%	75%	880 person(s)
Children aged 12-14 years old not in school	35%	21%	25%	300 person(s)
Total girls aged 12-14 years old	8%	8%	8%	605 person(s)
Girls aged 12-14 years old in school	62%	80%	73%	439 person(s)
Girls aged 12-14 years old not in school	38%	20%	27%	166 person(s)
Total boys aged 12-14 years old	9%	9%	8%	575 person(s)
Boys aged 12-14 years old in school	67%	78%	77%	441 person(s)
Boys aged 12-14 years old not in school	33%	22%	23%	134 person(s)

Note: Percentage is calculated on the basis of number of the total number of children within 12-14 yrs group, except for the first row of each section which is calculated on the basis of the total population.

3.1.13 Percentage of 12-14 year olds not in School, by Commune, in 2008



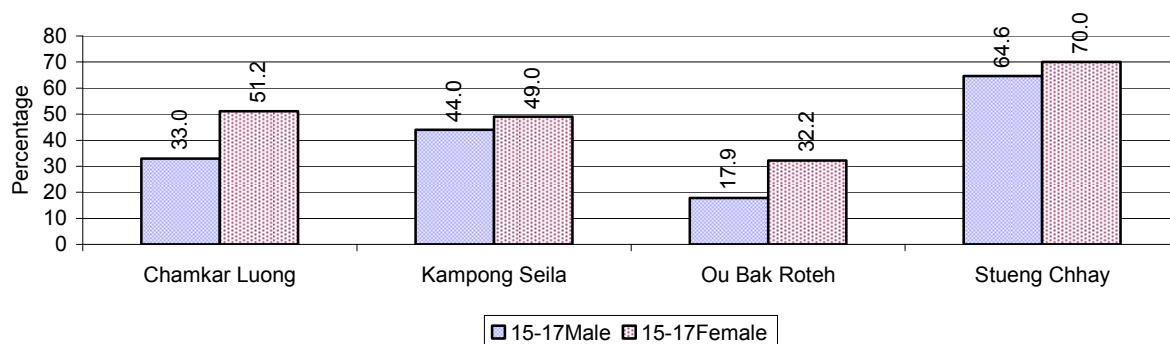
Note: Calculated as a percentage of the total 12-14 year old population in each commune

3.1.14 Upper Secondary Schools over 3 years

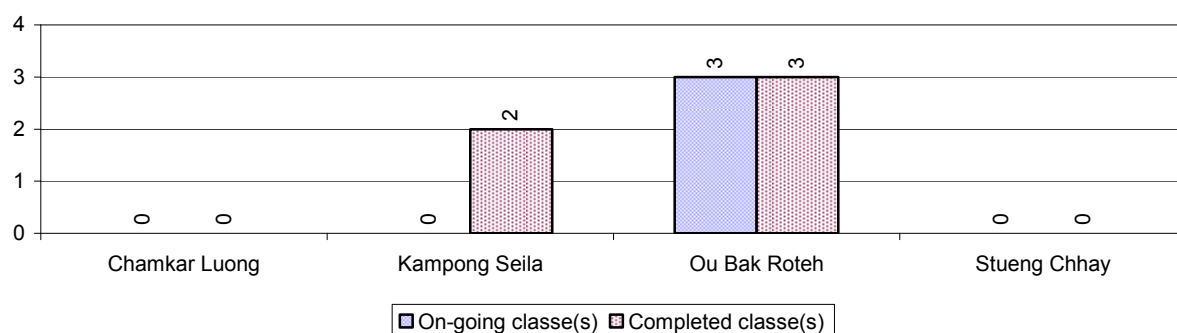
Description	2006	2007	2008
Number of upper secondary schools	1 school(s)	1 school(s)	1 school(s)
Number of upper secondary school rooms	10 room(s)	15 room(s)	10 room(s)
Number of upper secondary classes	1 class(es)	15 class(es)	9 class(es)
Number of upper secondary teachers	3 person(s)	5 person(s)	14 person(s)
Ratio of 15-17 yr olds to number of school	1,394	1,494	1,359
Ratio of 15-17 yr olds to number of school room	139	100	136
Ratio of 15-17 yr olds to number of classes	1,394	100	151
Ratio of 15-17 yr olds to number of teacher	465	299	97

3.1.15 Enrolment of 15-17 year old teenagers over 3 years

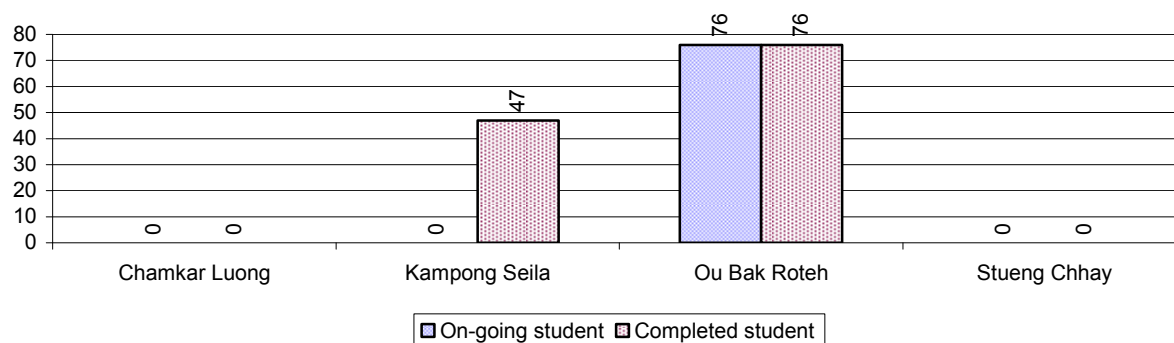
Description	2006	2007	2008
Number of teenage, 15-17 years old	1,394 person(s)	1,494 person(s)	1,359 person(s)
Number of teenage, 15-17 years old, who are not studying	710 person(s)	542 person(s)	561 person(s)
Percentage of teenage, 15-17 years old not studying	51%	36%	41%

3.1.16 Percentage of 15-17 year old Teenagers not at School, by Commune, in 2008**3.1.17 Literacy Classes as of 2008**

Literacy classes	Organized by:		Other Program(s)	Total
	PDoEYS	NGOs		
Number of On-going literacy classes	3 class(es)	0 class(es)	0 class(es)	3 class(e(s)
Number of literacy students in on-going classes	76 person(s)	0 person(s)	0 person(s)	76 person(s)
Completed literacy class(es)	5 classes	0 classes	0 classes	5 classes
Number of literacy students that have completed literacy classes	123 person(s)	0 person(s)	0 person(s)	123 person(s)
Number of students that passed	102 person(s)	0 person(s)	0 person(s)	102 person(s)

3.1.18 Number of on-going and completed Literacy Classes, by Commune, in 2008

3.1.19 Students of on-going & completed Literacy Classes, by Commune, in 2008

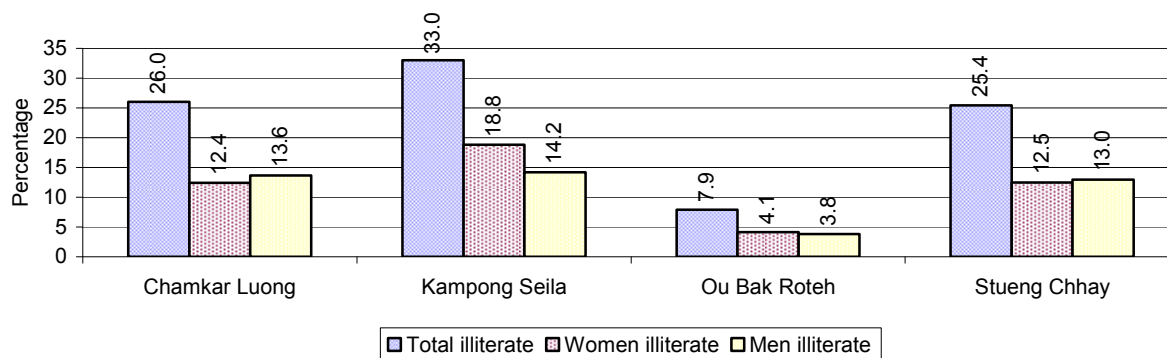


3.1.20 Percentage of illiterate People between 15-60, over 3 years

Illiteracy Status	2006 %	2007 %	2008	
			%	Number
Illiterate people, 15-60 years old	20%	19%	23%	2,102 person(s)
Illiterate females, 15-60 years old	10%	11%	12%	1,127 person(s)
Illiterate people, 15-17 years old	10%	15%	11%	151 person(s)
Illiterate females, 15-17 years old	4%	8%	5%	68 person(s)
Illiterate people, 18-24 years old	18%	14%	16%	347 person(s)
Illiterate females, 18-24 years old	8%	7%	7%	151 person(s)
Illiterate people, 25-60 years old	23%	22%	28%	1,604 person(s)
Illiterate females, 25-60 years old	12%	13%	16%	908 person(s)

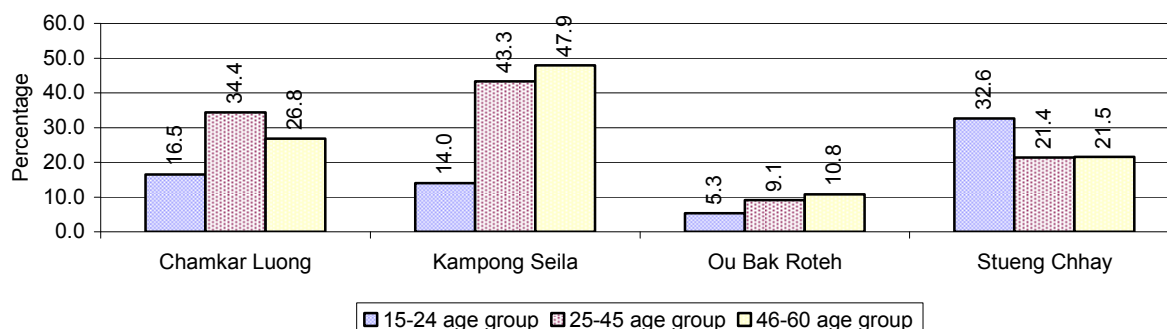
Note: Percentage is calculated on the basis of number of people in age each group.

3.1.21 Percentage illiterate People among 15-60 yrs old, by Commune, in 2008



Note: Percentages are calculated on the basis of number of people in that age group.

3.1.22 Percentage illiterate People for 15-24 yrs, 25-45 yrs and 46-60 yrs, by Commune, in 2008



Note: Percentage of illiterate people in each age group is calculated on the basis of number of people in that age group.

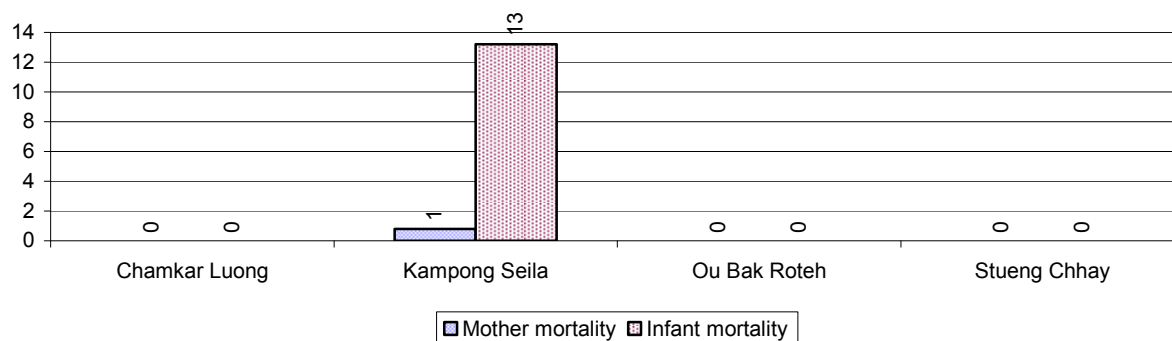
3.2 Health

3.2.1 Health Situation of Women and Children, over 3 years

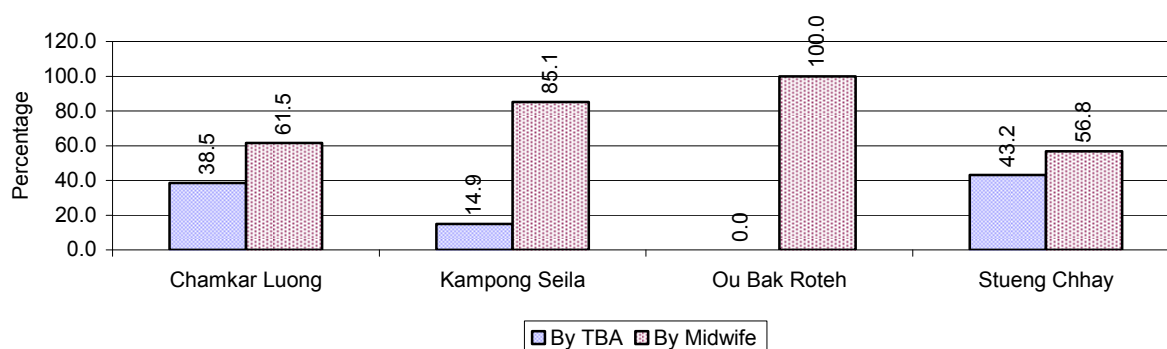
Description	2006	2007	2008
Number families with a birth during the year	314 families	352 families	243 families
Number of women who had their baby delivered by a TBA	124 person(s)	169 person(s)	49 person(s)
Percentage of women who had their baby delivered by a TBA	39 %	48 %	20 %
Number of women who had their baby delivered by a midwife	190 person(s)	183 person(s)	194 person(s)
Percentage of women had their baby delivered by a midwife	61 %	52 %	80 %
Number of mothers who died within 1 month of giving birth	0 person(s)	2 person(s)	5 person(s)
Mothers who died within 1 month of giving birth per 100,000 families having a delivery	0	568	2,058
Number of infants born during the year	319 person(s)	352 person(s)	248 person(s)
Number of Infants who died within 1 month	6 person(s)	10 person(s)	7 person(s)
Infants mortality within 1 month per 1,000 births	19	28	28
Number of children who died below the age of 5.	9 person(s)	68 person(s)	2 person(s)
Number of infants, aged 9-12 months, born during the year	212 person(s)	312 person(s)	142 person(s)
Nr. infants, aged 9-12 months, not receiving full immunization	74 person(s)	30 person(s)	13 person(s)
% of 9-12 months infants, not receiving full immunization	35 %	10 %	9 %

Note: TBA = Traditional Birth Attendant

3.2.2 Mothers dying within 0 days to 1 month of giving Birth and Infants dying within 1 month in 2008, by Commune

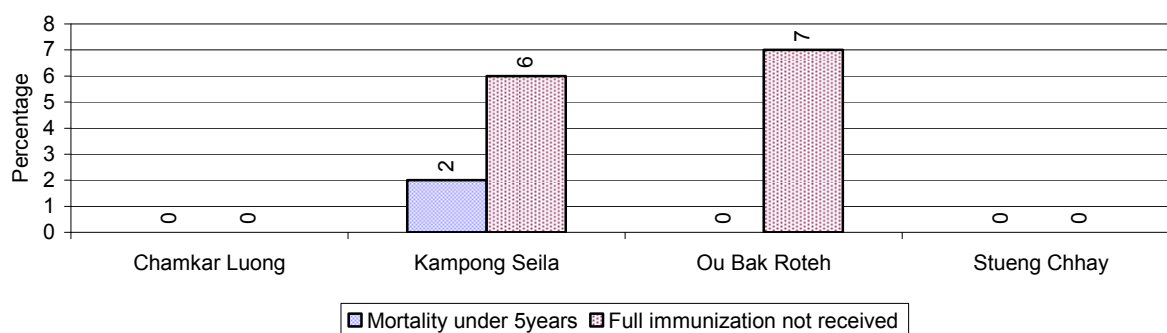


3.2.3 Percentage of Women delivering with a TBA or Midwife, by Commune



Note: Calculated as a percentage of total deliveries

3.2.4 Percentage of Children dying below 5 & of 9-12 months not receiving full Immunization, by Commune, in 2008



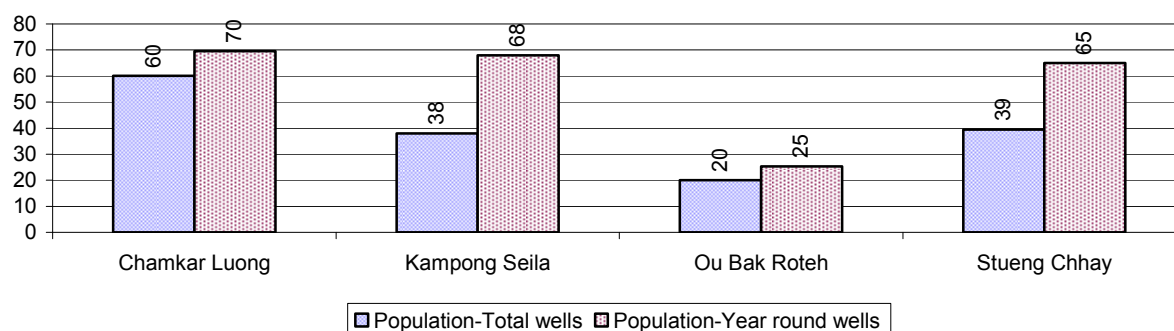
Note: Mortality rate calculated as a percentage of the total 5 year old population. Lack of immunization received calculated as a percentage of the total number 9-12 months olds there are

3.3 Water and Sanitation

3.3.1 Number of different types of Wells over 3 years

Type of wells	Number of wells by year		
	2006	2007	2008
<i>Total number of pumped or mixed wells</i>	417	283	292
Year-round usable pumped or mixed wells	280	207	222
Dry season unusable pump or mixed wells	137	76	70
Pump or mixed wells needing repair/rehabilitation	45	114	126
<i>Total number of ring wells</i>	118	158	187
Year-round usable ring wells	91	100	113
Dry season unusable ring wells	27	58	74
Ring wells needing repair/rehabilitation	37	67	80
<i>Total number of unprotected dug wells</i>	161	181	208
Year-round usable unprotected dug wells	112	97	83
Dry season unusable unprotected dug wells	49	84	125

3.3.2 Ratio of People to Wells, by Commune, in 2008

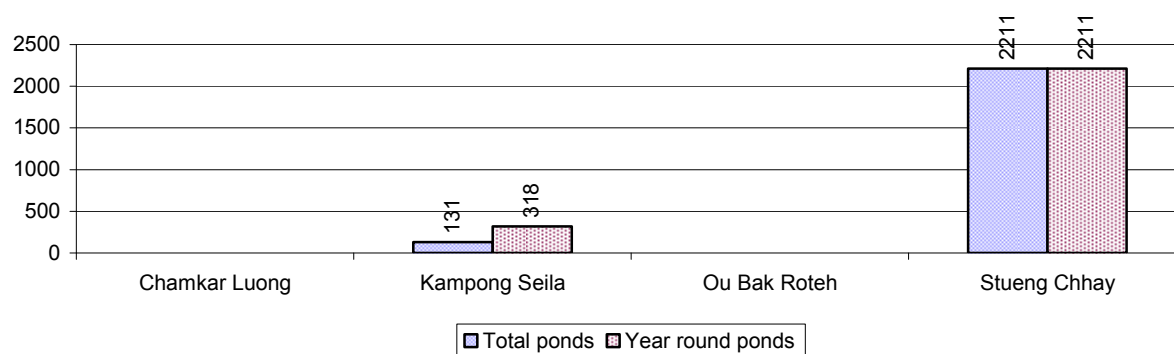


Note: Year-round wells excluding unprotected wells

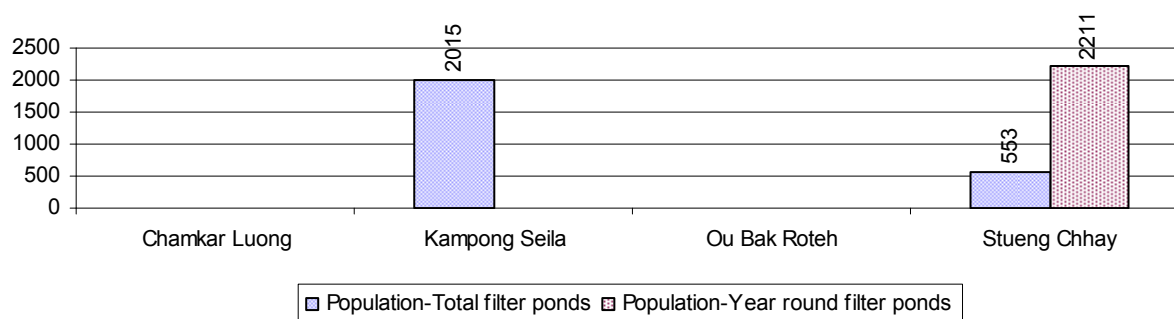
3.3.3 Potable Ponds over 3 years

Type of Pond	2006	2007	2008
<i>Total number of normal-type ponds</i>	30 pond	37 pond	47 pond
Year-round usable normal-type ponds	9 pond	11 pond	20 pond
Dry season unusable normal-type ponds	21 pond	26 pond	27 pond
Normal-type ponds needing repair/rehabilitation	6 pond	24 pond	27 pond
<i>Total number of filter ponds</i>	8 pond	18 pond	7 pond
Year-round usable filter ponds	2 pond	2 pond	1 pond
Filter ponds, dry season unusable	6 pond	16 pond	6 pond
Filter ponds needing repair/rehabilitate	2 pond	13 pond	0 pond

3.3.4 Ratio of People to normal Ponds, by Commune in 2008



3.3.5 Ratio of People to Filter Ponds, by Commune, in 2008

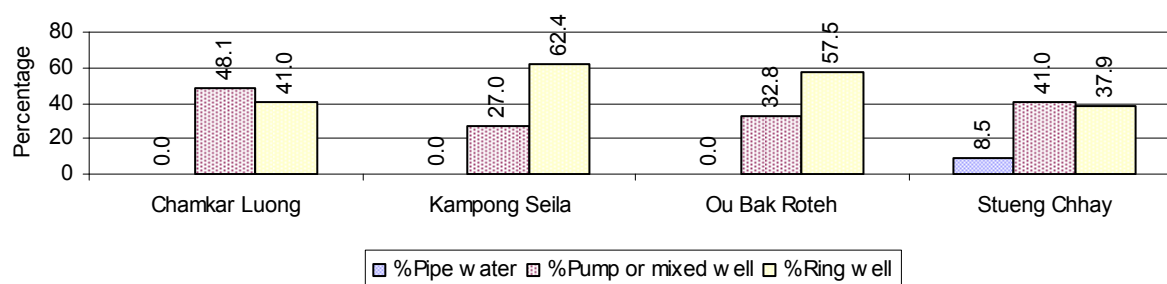


3.3.6 Source of potable Water for Households, over 3 years

Water sources	2006	2007	2008	
	%	%	%	Number
Families using water from purification system	7%	5 %	1 %	41 families
Families using water from pump, mixed wells	38%	41 %	34 %	1,072 families
Families using water from ring wells and open dug wells	31%	38 %	54 %	1,711 families
Families using water from pond	4%	5 %	4 %	133 families
Families using water from rain water storage	2%	1 %	0 %	12 families
Families using water from rivers, lakes, natural ponds and reservoirs	17%	10 %	6 %	192 families

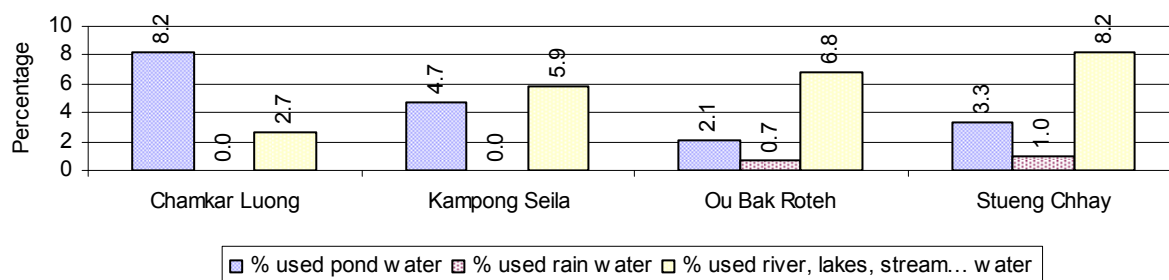
Note: Calculated as a percentage of the total number of families.

3.3.7 Percentage Families using different Water Sources, by Commune, in 2008



Note: Calculated as a percentage of the total number of families in each commune

3.3.8 Percentage Families using Water from Rain Water Storage, Ponds and natural Sources (rivers/lakes/natural ponds/reservoirs), by Commune, 2008



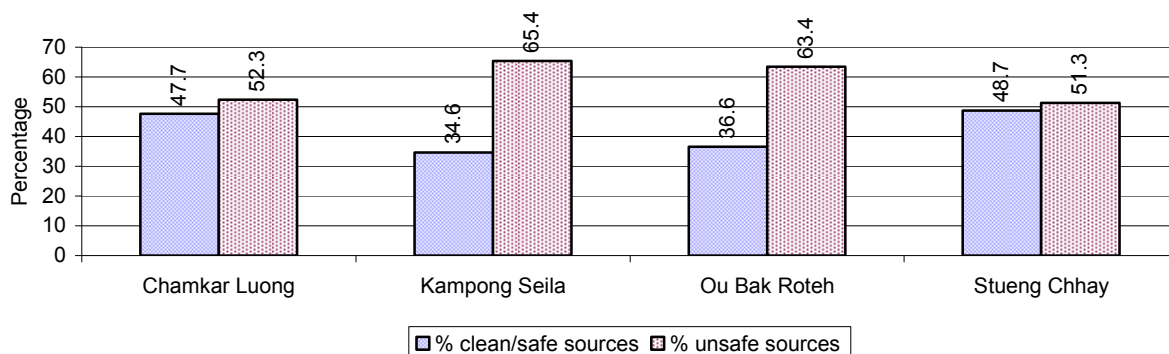
Note: Calculated as a percentage of the total number of families in each commune

3.3.9 Drinking Water Sources in the dry Season over 3 years

Percentage Families that get drinking water from:	2006	2007	2008	
	%	%	%	Number
from clean/safe sources	33 %	54 %	39 %	1,240 families
from unsafe sources	67 %	46 %	61 %	1,921 families

Note: Calculated as a percentage of the total number of families.

3.3.10 Percentage Families using safe and unsafe Water Sources in the dry Season, by Commune, in 2008



Note: Calculated as a percentage of the total number of families in each commune.

3.3.11 Drinking Water Purification by Households, over 3 years

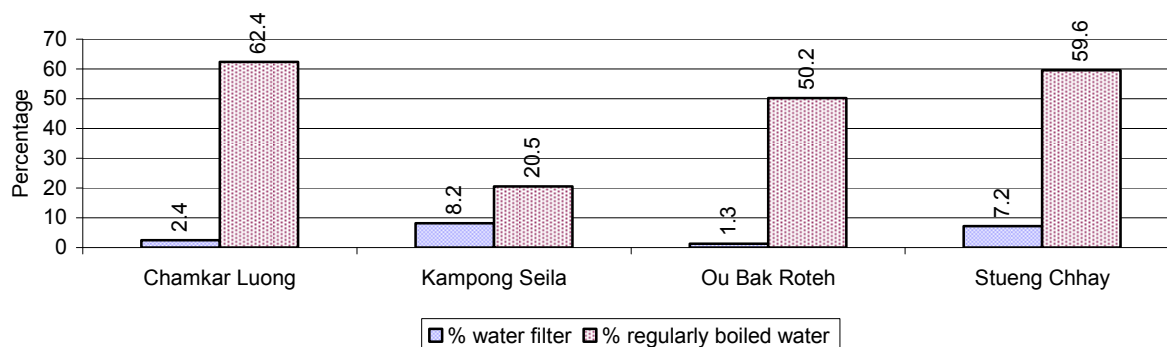
This table shows the different ways families make water safe for drinking.

Families, who:	2006	2007	2008	
	%	%	%	Number
Filter water for drinking	7%	16%	5 %	162 families
Boil water for drinking	54%	35%	41 %	1,310 families

Note: Calculated as a percentage of the total number of families

3.3.12 Percentage Families filtering Water or regularly boiling Water, by Commune, in 2008

This graph shows the different ways families make drinking water safe.



Note: Calculated on as a percentage of the total number of families in each commune.

3.3.13 Families' access to Water, over 3 years

Families access to water	2006	2007	2008	
	%	%	%	Number
Families with water at home or in less then 150m	36%	33%	28 %	883 families
Families with water 150m or more away from home	21%	33%	32 %	1,015 families

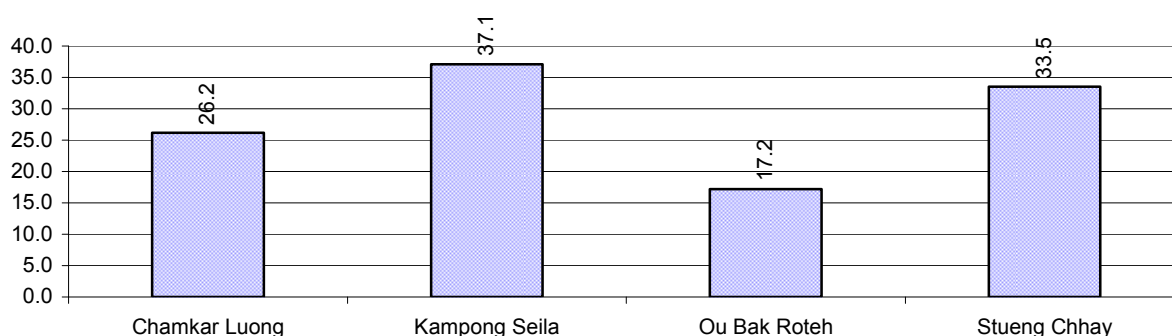
Note: Calculated as a percentage of the total number of families

3.3.14 Ratio of people to Latrines over 3 years

Description	2006	2007	2008	
	Ratio	Ratio	Ratio	Number
Ratio of people to latrines	40.1	31.5	26.0	579.0

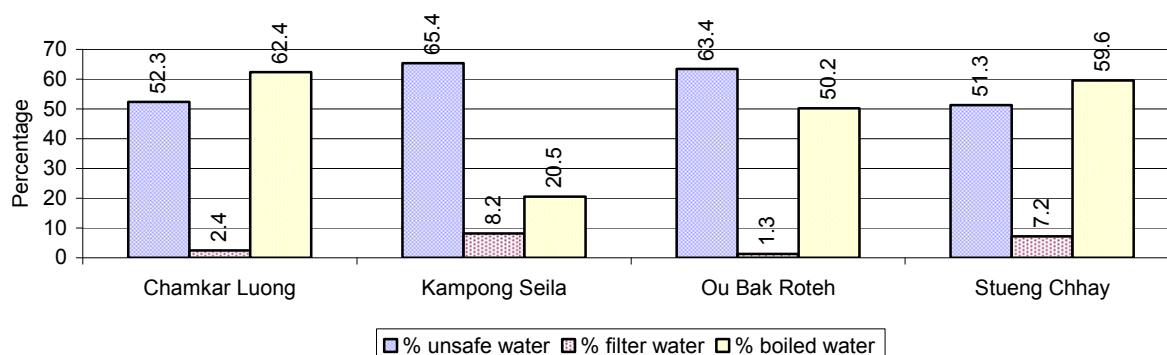
Note: Ratio calculated by dividing the number of houses with latrines by the total population

3.3.15 Ratio of People to Latrines, by Commune, in 2008



Note: Ratio calculated by dividing the number of houses with latrines by the total population in a Commune.

3.3.16 Percentage of Families drinking boiled, filtered or unsafe Water, by Commune, in 2008



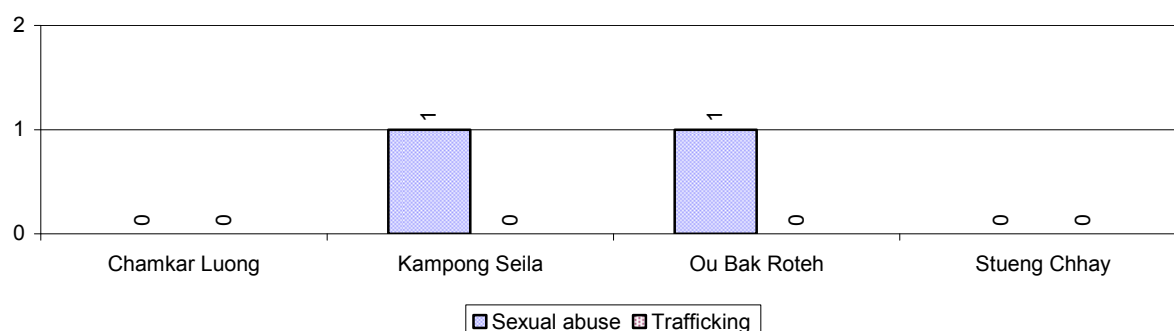
Note: Calculated as a percentage of the total number of families in each commune.

3.4 Vulnerable groups

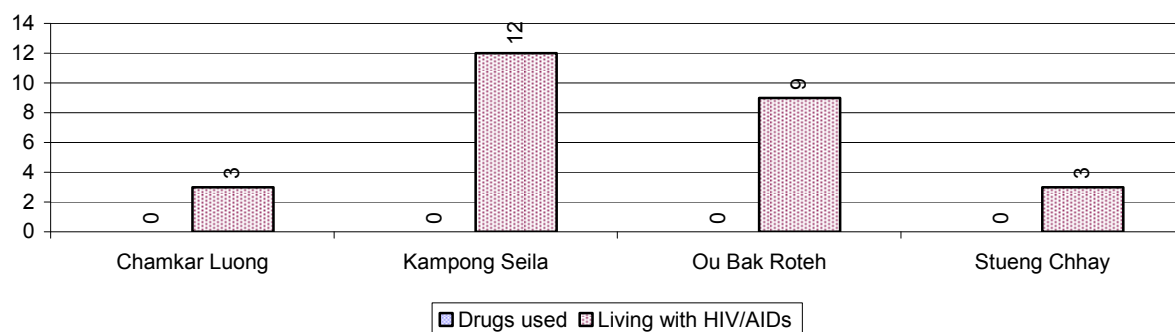
3.4.1 Vulnerable Groups in need of special Protection over 3 years

Vulnerable groups	2006	2007	2008
Victims of sexual abuse	0 person(s)	1 person(s)	2 person(s)
Victims of human trafficking	0 person(s)	0 person(s)	0 person(s)
Families with family member(s) using drugs	0 families	18 families	0 families
Families with family member(s) living with HIV/AIDS	29 families	28 families	27 families
Children under 18 yrs old whose parent died of AIDS	67 person(s)	48 person(s)	34 person(s)
Orphaned/abandoned children under 18 yrs old (all cases)	172 person(s)	136 person(s)	129 person(s)
Elderly persons without guardian	43 person(s)	52 person(s)	31 person(s)
Disabled people able to earn an income	40 person(s)	26 person(s)	23 person(s)
Disabled people unable to earn an income	26 person(s)	25 person(s)	25 person(s)
Disabled people under 18 yrs old	10 person(s)	13 person(s)	4 person(s)
Victims of natural disasters	366 families	187 families	24 families
Victims of land mines and unexploded weapons	4 person(s)	1 person(s)	0 person(s)

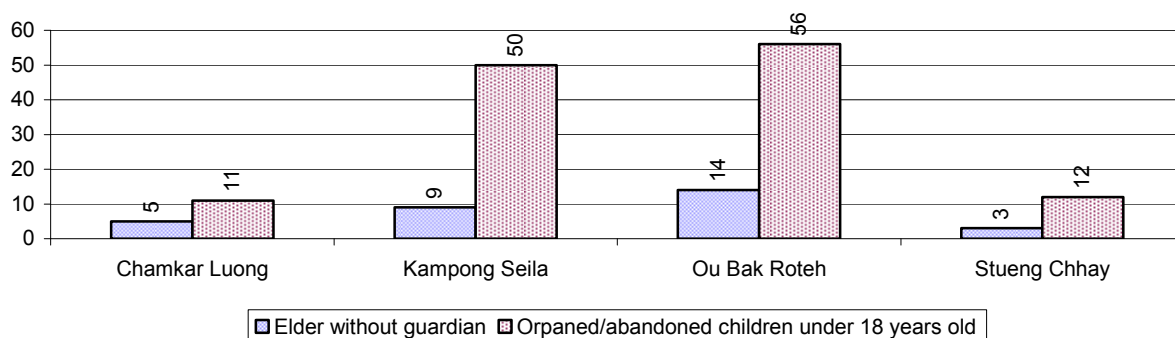
3.4.2 Registered Victims of sexual Abuse or Trafficking, by Commune, for 2008



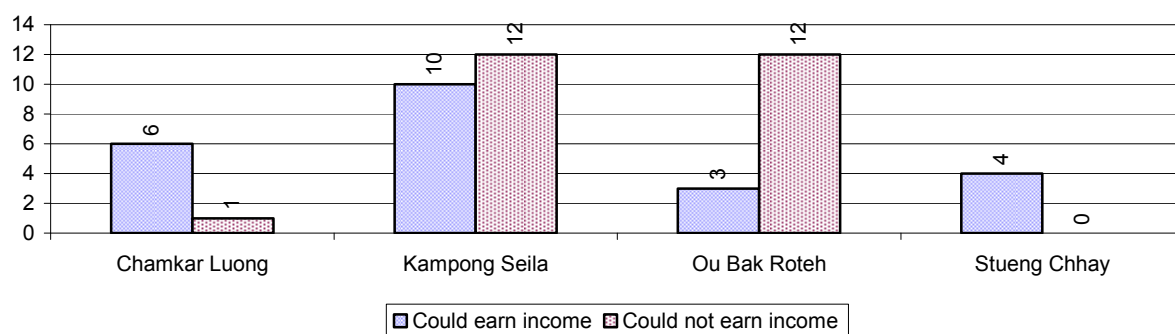
3.4.3 Registered Families with Member(s) using Drugs or living with HIV/AIDS, by Commune, for 2008



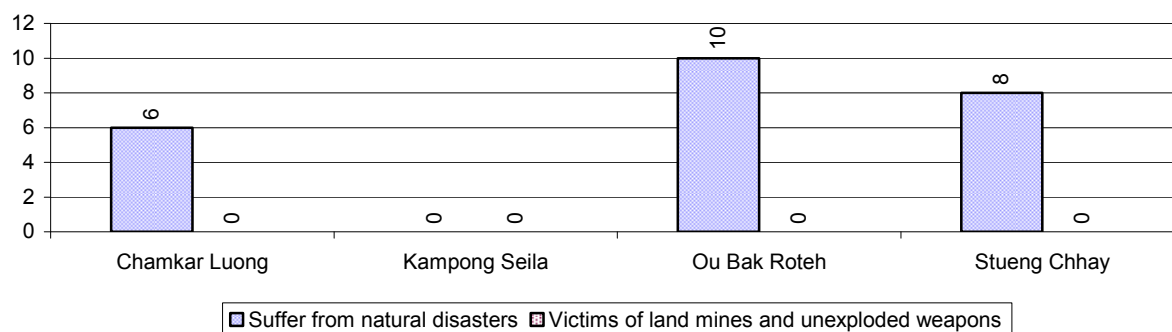
3.4.4 Elderly Persons without a Guardian and orphaned/abandoned Children under 18 years old, by Commune, for 2008



3.4.5 Number of disabled People who could or could not earn an Income, by Commune, for 2008



3.4.6 Number of Families who suffered from natural Disasters, and number of Victims of Land Mines and unexploded Weapons, by Commune, in 2008



3.5 Migration

3.5.1 Migration over 3 years

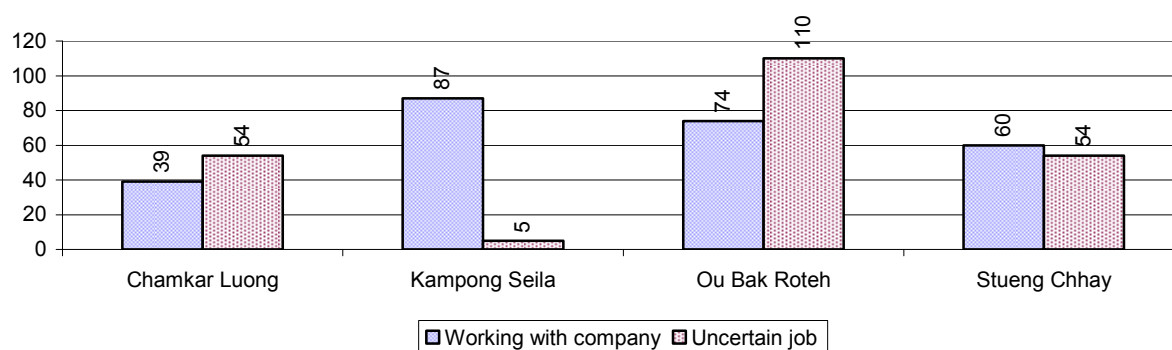
Description	2006	2007	2008
Number of families permanently in-migrated	371 families	51 families	20 families
Total number of people	1,808 person(s)	209 person(s)	110 person(s)
Total number of female	997 person(s)	97 person(s)	54 person(s)
Number of families permanently out-migrated	55 families	40 families	105 families
Total number of people	203 person(s)	184 person(s)	350 person(s)
Total number of female	101 person(s)	91 person(s)	195 person(s)
Number of families staying temporarily	167 families	91 families	113 families
Total number of people	622 person(s)	307 person(s)	369 person(s)
Total number of female	297 person(s)	147 person(s)	172 person(s)

3.5.2 Job Migration

Description	2006	2007	2008
Number of people migrated to work with company/factory	3%	3%	3%
Number of people migrated to work, but have uncertain jobs	1%	2%	3%

Note: Calculated as a percentage of the total population of 18-60 year olds

3.5.3 Number of People working outside their home Villages in a Company/Factory or with an uncertain Job in 2008

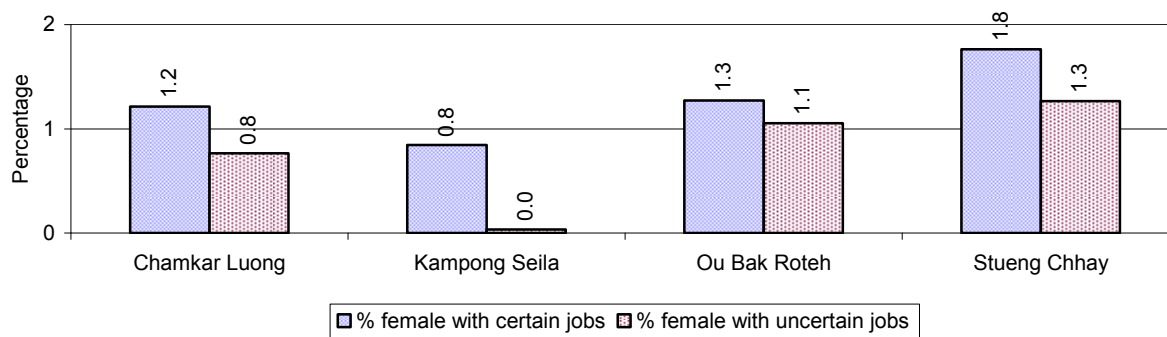


3.5.4 Female migration over 3 years

Description	2006 %	2007 %	2008	
			%	Number
Total number of migrants	1.9%	2.1%	3.2%	483 person(s)
Number of female migrants	1.3%	1.1%	1.8%	270 person(s)
Total number of migrants, who go to work with company/factory (with certain jobs)	1.3%	1.2%	1.7%	260 person(s)
Number of female migrants with certain jobs	1.0%	0.7%	1.2%	175 person(s)
Total number of migrants with uncertain jobs	0.6%	0.8%	1.5%	223 person(s)
Number of female migrants with uncertain jobs	0.3%	0.4%	0.6%	95 person(s)

Note: Calculated as a percentage of the total population

3.5.5 Percentage female Migrants with certain and uncertain Jobs, by Commune, in 2008



Note: Calculated as a percentage of the total population of the commune

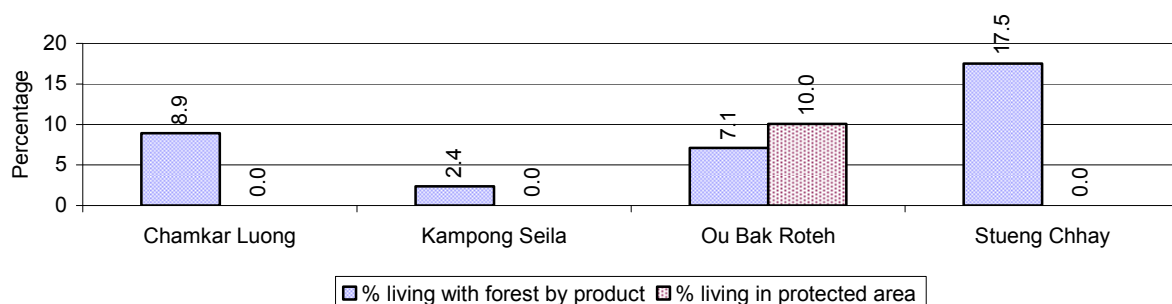
4 Natural Resources and Environment (NRE)

4.1 Families involved with NRE issues over 3 years

Description	2006 %	2007 %	2008	
			%	Number
Families living with forest by products	8 %	6 %	7 %	223 families
Families living in a protected area	3 %	3 %	3 %	96 families
Houses with access to garbage collection service	2 %	1 %	1 %	34 families
Families affected by environmental pollution	3 %	12 %	1 %	46 families
Families using chemical fertilizer	16 %	16 %	21 %	655 families
Families using chemical pesticide	9 %	17 %	19 %	596 families

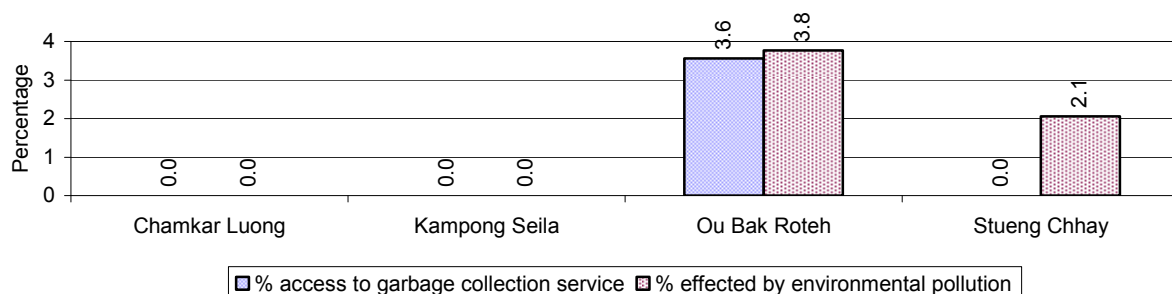
Note: Calculated as a percentage of the total number of families

4.2 Percentage of Families involved with Natural Resource issues, by Commune, for 2008



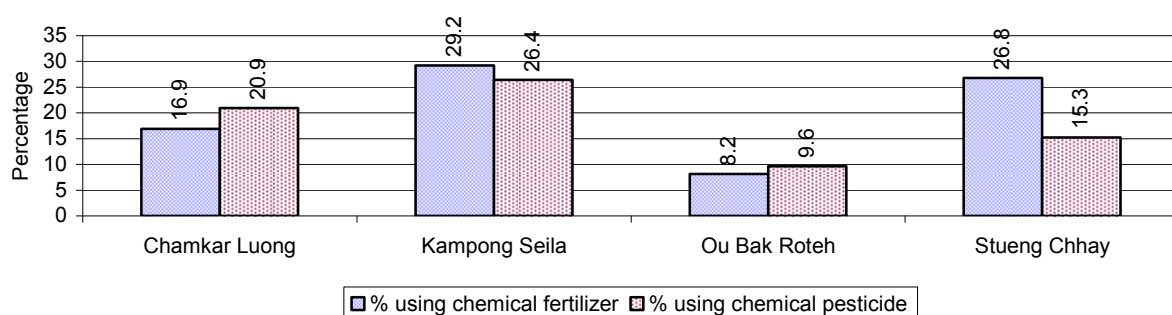
Note: Calculated as a percentage of the number of families in each commune

4.3 Percentage Houses with access to Garbage collection and Families affected by environmental Pollution, by Commune, for 2008



Note: Garbage collection is calculated as a percentage of the total number of houses in each commune and families affected by environmental pollution is calculated as a percentage of the total number of families in each commune.

4.4 Percentage Families using chemical Fertilizer and chemical Pesticides, by Commune, for 2008



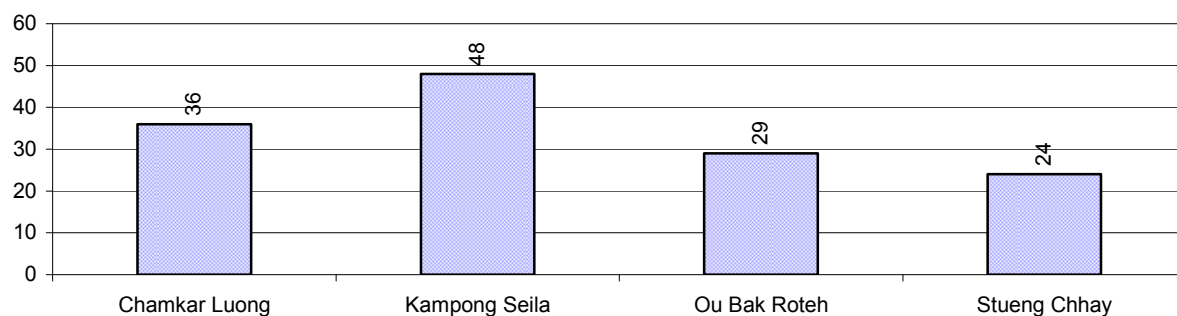
Note: Calculated as a percentage of the total number of families in each commune

5 Administration and Security

5.1 Birth Registration across 3 years

Description	2006	2007	2008
Number of infants to be registered	313 person(s)	342 person(s)	241 person(s)
Number of unregistered infants the year	80 person(s)	143 person(s)	137 person(s)
Percentage of infants unregistered	26 %	42 %	57 %

5.2 Number of unregistered Infants born in 2008, by Commune

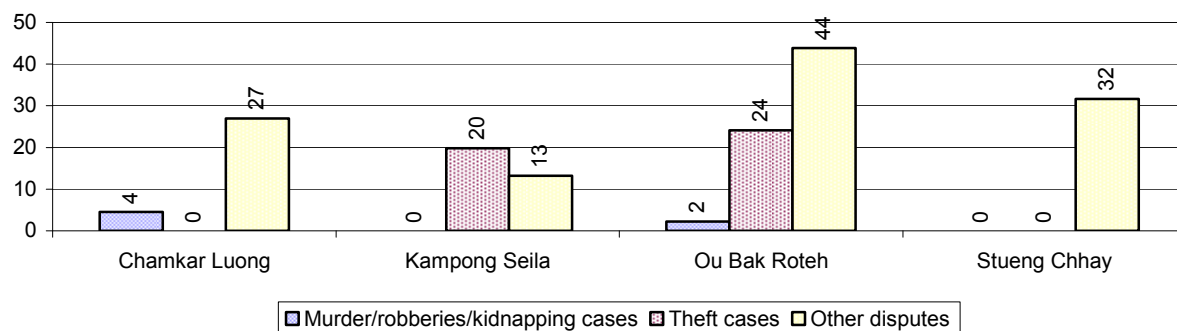


5.3 Registered criminal Cases over 3 years

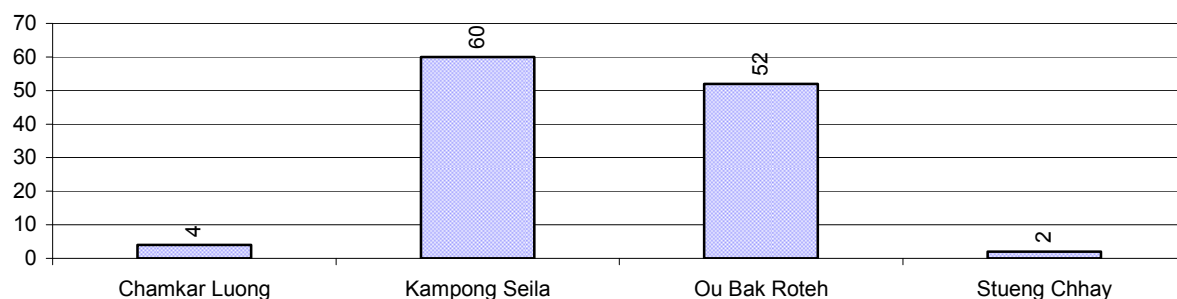
Description	2006	2007	2008
Murders, robberies and kidnapping cases	3 case(s)	5 case(s)	2 case(s)
Theft cases	114 case(s)	43 case(s)	23 case(s)
land dispute cases	99 case(s)	82 case(s)	118 case(s)
Other disputes cases	121 case(s)	108 case(s)	41 case(s)

Note: this reflects only registered criminal cases

5.4 Registered criminal Cases per 10,000 people, by Commune, for 2008



5.5 Number of registered Land Disputes, by Commune, in 2008

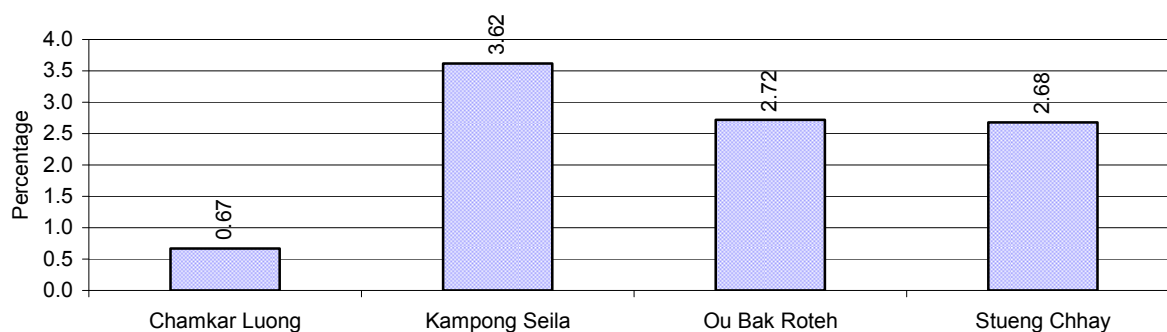


6 Gender

6.1 Registered Domestic Violence over 3 years

Description		2006	2007	2008
Families experiencing domestic violence		149 families	106 families	88 families(s)
% families experiencing domestic violence		4 %	3 %	3 %
Domestic violence cases reported by village chiefs		166 case(s)	215 case(s)	61 case(s)
Type	Physical violence	101 case(s)	109 case(s)	44 case(s)
	Sexual violence	0 case(s)	76 case(s)	0 case(s)
	Mental violence	45 case(s)	25 case(s)	13 case(s)
	Household economic violence	20 case(s)	5 case(s)	4 case(s)
Number of administrative decisions on domestic violence		87 case(s)	76 case(s)	33 case(s)
% of administrative decisions on domestic violence		52 %	35 %	54 %

6.2 Percentage of registered cases of Families experiencing domestic Violence, by Commune, in 2008



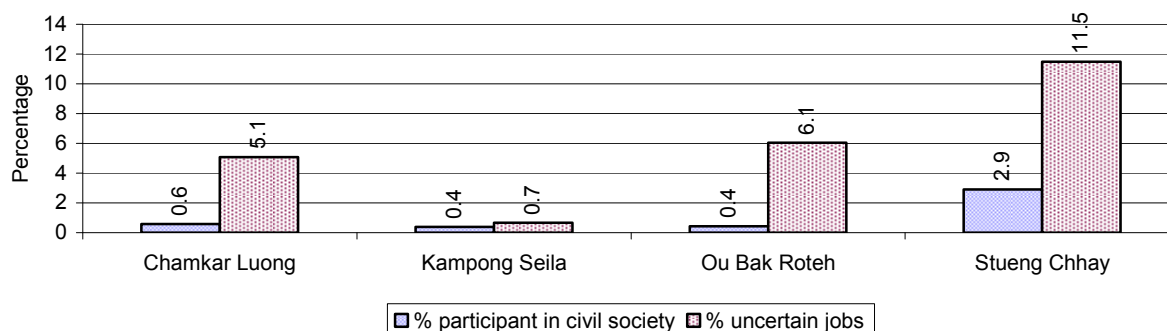
Note: Calculated as a percentage of the total number of families in each commune

6.3 Women's involvement over 3 years

Description	2006 %	2007 %	2008	
			%	Number
People participating in civil society	1%	1%	1%	169 person(s)
Women participating in civil society	1%	1%	1%	121 person(s)
People, 18-60 yrs, with uncertain/irregular jobs	19%	14%	11%	829 person(s)
Women, 18-60 yrs, with uncertain/irregular jobs	7%	8%	5%	366 person(s)

Note: Participation can be in NGOs, CBOs, credit groups, women's unions, parties and other civil society organizations. The first section is calculated as a percentage of the total population. The second section is calculated as a percentage of the total 18-60 year old population.

6.4 Percentage of Female Participants in Civil Society and of 18-60 year women with uncertain Jobs, by Commune, in 2008



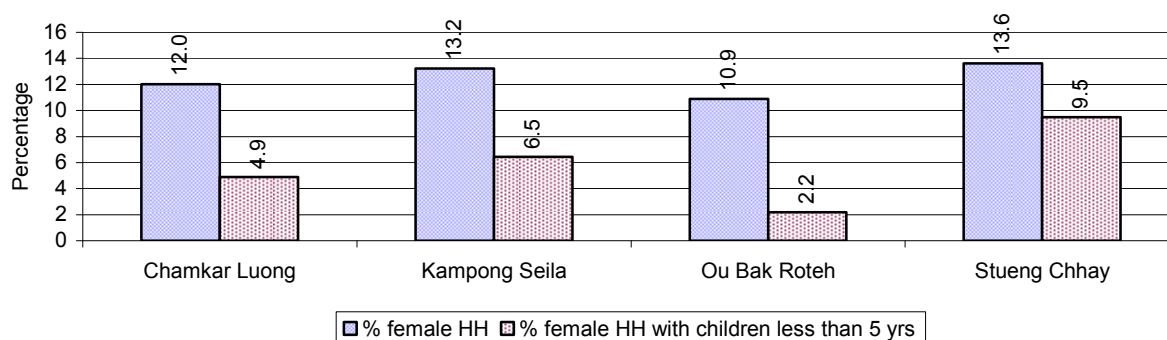
Note: Percentage of female participants in civil society is calculated as a percentage of the total population per commune. The percentage of 18-60 years old women with uncertain jobs is calculated as a percentage of the total 18-60 year old population per commune.

6.5 Female-headed Households over 3 years

Families with:	2006	2007	2008	
	%	%	%	Number
Households in which a woman is the family head	21%	22%	12%	392 families
Households in which a woman is the family head with children of less than 5 yrs	9%	7%	5%	171 families

Note: Calculated as a percentage of the total number of families

6.6 Percentage female-headed Households and with Children of less than 5 years old, by Commune, in 2008



Note: Calculated as a percentage of the total number of families in each commune
HH: Headed Household

7 Indigenous People in the District

7.1 Ethnic Minorities in the District over 3 years

Race of indigenous	2006		2007		2008	
	# families	# population	# families	# population	# families	# population
Phnong	0 families	0 person(s)	0 families	0 person(s)	0 families	0 person(s)
Kouy	0 families	0 person(s)	0 families	0 person(s)	0 families	0 person(s)
Stieng	0 families	0 person(s)	0 families	0 person(s)	0 families	0 person(s)
Mil	0 families	0 person(s)	0 families	0 person(s)	0 families	0 person(s)
Kroal	0 families	0 person(s)	0 families	0 person(s)	0 families	0 person(s)
Thmorn	0 families	0 person(s)	0 families	0 person(s)	0 families	0 person(s)
Khaonh	0 families	0 person(s)	0 families	0 person(s)	0 families	0 person(s)
Tompouonn	0 families	0 person(s)	0 families	0 person(s)	0 families	0 person(s)
Charay	0 families	0 person(s)	0 families	0 person(s)	0 families	0 person(s)
Kroeung	0 families	0 person(s)	0 families	0 person(s)	0 families	0 person(s)
Kavet	0 families	0 person(s)	0 families	0 person(s)	0 families	0 person(s)
Saouch	0 families	0 person(s)	0 families	0 person(s)	0 families	0 person(s)
Lun	0 families	0 person(s)	0 families	0 person(s)	0 families	0 person(s)
Kachak	0 families	0 person(s)	0 families	0 person(s)	0 families	0 person(s)
Praov	0 families	0 person(s)	0 families	0 person(s)	0 families	0 person(s)
Others	0 families	0 person(s)	0 families	0 person(s)	0 families	0 person(s)
Total	0 families	0 person(s)	0 families	0 person(s)	0 families	0 person(s)

Note: "Others" refer to other ethnic groups which are not listed.

7.2 Other Minorities in the District over 3 years

Minority	2006		2007		2008	
	# families	# population	# families	# population	# families	# population
Khmer Islamic	138 families	561 person(s)	145 families	550 person(s)	40 families	452 person(s)
Vietnamese	0 families	0 person(s)	0 families	0 person(s)	2 families	18 person(s)
Laos	0 families	0 person(s)	0 families	0 person(s)	0 families	0 person(s)

Note: Number of indigenous and minority population are additional data, so some village may not recorded.

SECTION C: PLANS AND PROJECTS

8 Priorities and Plans

8.1 Priorities of Commune Councils for 2009 in the District by Sector

The District Priority Activity Matrix (DPAM) data are taken from the CDPD. The DPAM is used for the District Integration Workshop (DIW), to show what kind of projects the commune has proposed in their Commune Investment Plan (CIP) for 2009. Donors, departments and other agencies then consider which projects they want to support and which projects they are not interested in. This results in Temporary Agreements between the Commune Council and the Supporter (NGO, Department, private donor, etc), as shown in table 8.2

No.	Project Name	Chamkar Luong	Kampong Seila	Ou Bak Roteh	Stueng Chhay	Req.Project
		180401	180402	180403	180404	Total
Economic						
1	Compost fertilizer training	6 training	4 training	2 training		3
2	Chemical and pesticide application training		4 training			1
3	Animal vaccination request	168 Head	40 Head			2
4	Village veterinary training	3 Time				1
5	Animal raising training			2 training		1
6	Pig raising training				4 km	1
7	Rice seed request	1 T	400 Kg	4 T	400 Kg	4
8	Calf for raising request	45 Head		80 Head		2
9	Pesticide request		500 package	40 bottle		2
10	Vegetable seed and farming tools request				16 Kg	1
11	Family fish pond construction				8 Pond	1
12	Laterite/natural gravel road construction			2 km	1 km	2
13	Culvert construction	5 place	1 place		4 place	4
14	Bridger construction		1 place			1
15	Laterite/natural gravel road repairing	4 km	2 km	100 m3	6 km	12
16	Culvert repairing	2 place				1
17	Canal construction	2 place				1
18	Dam construction		0 km			1
19	Cash credit			60 family		1
20	Agriculture tools credit			2 set	2 set	2
21	Livestock bank		20 Head		22 Head	3
Social						
1	Family planning		4 training			1
2	Reproductive health awareness education		4 training			1

District Data Book 2009: Development Plans and Projects

No.	Project Name	Chamkar Luong	Kampong Seila	Ou Bak Roteh	Stueng Chhay	Req.Project
		180401	180402	180403	180404	Total
3	Nutrition education training to VHV			4 training		1
4	Midwife strengthening/training		1 training			1
5	Mosquito nets distribution/treatment		400 family			1
6	Mosquito larvae removal treatment		400 family			1
7	Health staffs need at health center	2 person				1
8	Patients transport mean improvement	1 set				1
9	Dig pump well construction/repair	3 well				1
10	Pond water construction/rehabilitation	8 well				1
11	Latrine construction		40 toilet	100 toilet	40 toilet	4
12	Commune health center construction	1 place				1
13	Village health post construction		1 place	1 place	1 place	3
14	Ring wells construction			5 well	16 well	2
15	Ponds construction			5 Pond		1
16	Literacy class				4 class	1
17	Literacy teacher support	8 person				1
18	Literacy class participation encouragement	8 class				1
19	School building				1 building	1
20	Primary school creation/construction		5 room	1 building		2
21	Kindergarten school construction/repair	1 building		4 class	2 class	3
22	Pre-school teacher/kid keeper support	5 person		4 person		2
23	Teacher/volunteer teacher need		5 person			1
24	Vocational training		1 training			1
25	Engine/car repairing skill training		1 training			1
26	Electric equipment repair skill training		1 training			1
NREM						
1	Environmental awareness and law education	3 training	4 training			2
2	Forestry law education	3 training	4 training			2
3	Tree plantation project				1600 Tree	1
4	Illegal fishing prevention	3 training	1 Fishing Community	3 Fishing Community		3
5	Natural water ways/reservoirs rehabilitation/conservation		1 place			1
6	Fish habitat/fish species protection/conservation	1 Fishing Community				1
7	Community forestry activities support			1 Forestry	1 Forestry	2

District Data Book 2009: Development Plans and Projects

No.	Project Name	Chamkar Luong	Kampong Seila	Ou Bak Roteh	Stueng Chhay	Req.Project
		180401	180402	180403	180404	Total
				Community	Community	
8	Public rubbish bin sitting		400 Garbage bin		20 Garbage bin	2
9	Waste collection service creation/improvement		1 set			1
10	Biogas cooking project			20 place		1
Administration and Security						
1	Human rights and law training	4 training				1
2	Commune office construction/renovation			1 place		1
3	Village office construction/renovation			1 place		2
4	Major equipment to support commune administration			2 set		1
5	Generator and lamp for commune office			4 set		1
6	Land law dissemination		4 training		2 training	2
7	Provision of land titles/certificates			400 doc	80 doc	2
8	Social land concession project		300 ha	1 ha		3
9	Drug and related law education		4 training			1
10	Local security strengthening		4 training			1
11	Gambling control/elimination activation		4 training			1
12	Abused/violated/illegal acts quelled activation	4 training				1
13	Information board provision/creation/built		4 piece			1
14	Penal and civil law dissemination	4 training				1
15	Traffic law and public order dissemination			2 training		1
16	TV/Radio broadcasting of local news			5 Info-board		1
Gender						
1	Woman and children's rights dissemination				4 training	1
2	Tailor skill training	2 training		2 training	2 training	3
3	Weaving skill training/weaving craft creation	2 training				1
4	Vine/rattan/leaf/mat weaving skill training	2 training		2 training		2
5	Law against domestic violence dissemination	4 training	4 training	4 training	4 training	4
6	Law against trafficking dissemination		4 training			1
7	Protection network for women and children dissemination	5 training				1
8	Trafficking information disseminations			4 training		1

Source: CDPD – District Priority Matrix

8.2 Temporary Agreements by Commune, for 2009²

At the District Integration Workshop (DIW) the Supporters (donors, agencies, private donors, NGOs, etc.) identify which projects/activities they would like to support or they put forward their own projects to be implemented in a particular commune. Once there is agreement between Commune Councils and Supporters on specific projects a **Temporary Agreement** is signed by the commune and the Supporter to show their mutual commitment to the identified projects/activities.

It is important to keep in mind that such Temporary Agreements do not necessarily result in implementation.

8.2.1 Temporary Agreements for 2009 as per DIW 2008 for Commune: Chamkar Luong

Commune GIS	Commune	Temporary Agreements				Supporter	Funding Source	Listed in CIP befor DIW
		Project Name	Quantity	Unit	Est.Cost (K.Riels)			
Economic								
180401	Chamkar Luong	Animal vaccination request	0	Head	0	Department of Agriculture Forestry and Fisheries		✓
180401	Chamkar Luong	Pesticide spraying support	0	Time	0	Department of Agriculture Forestry and Fisheries		☐
Social								
180401	Chamkar Luong	Vaccination support, pregnancy medical check, birth spacing and ferrous medicines provision	0	time	0	Department of Health		☐
180401	Chamkar Luong	DOTS strategy implementation to cure TB	6	Month	0	Department of Health		☐
180401	Chamkar Luong	Literacy class participation encouragement	2	class	1680	Department of Education Youth and Sports		✓
180401	Chamkar Luong	Quarterly TBA meeting support	4	time	0	Department of Health		☐
180401	Chamkar Luong	Dig pump well construction/repair	0	well	0	Department of Rural Development		✓
180401	Chamkar Luong	Health center committee strengthening meeting	6	time	0	Department of Health		☐
180401	Chamkar Luong	Patients transport mean improvement	0	set	0	Department of Health		✓
180401	Chamkar	Outdoor medical consultation	0	time	0	Department of Health		☐

² Not all the data from the CDPD has been translated to English, this has resulted in some cells in the TA tables being blank.

District Data Book 2009: Development Plans and Projects

Commune GIS	Commune	Temporary Agreements				Supporter	Funding Source	Listed in CIP before DIW
		Project Name	Quantity	Unit	Est.Cost (K.Riels)			
	Luong							
180401	Chamkar Luong	Fever, inflammation respiration disease and diarrhea control training	6	time	0	Department of Health		<input type="checkbox"/>
180401	Chamkar Luong	Bird flue training and meeting support	5	time	2168	CARE International in Cambodia		<input type="checkbox"/>
180401	Chamkar Luong	Pre-school teacher/kid keeper support	5	person	0	Department of Education Youth and Sports		✓
180401	Chamkar Luong	Literacy class participation encouragement	3	class	0	Department of Education Youth and Sports		✓
180401	Chamkar Luong	Dig pump well construction/repair	0	well	0	Department of Rural Development		✓
180401	Chamkar Luong	Vitamin A and deworming pills supply to children	2	time	0	Department of Health		<input type="checkbox"/>
180401	Chamkar Luong	Dig pump well construction/repair	16	well	0	Department of Rural Development		✓
180401	Chamkar Luong	Monthly village health volunteer meeting support	12	time	0	Department of Health		<input type="checkbox"/>
180401	Chamkar Luong	Pond water construction/rehabilitation	24	well	0	Department of Rural Development		✓
180401	Chamkar Luong	Impregnation mosquito net distribution	0	mosqui-net	0	Department of Health		<input type="checkbox"/>
180401	Chamkar Luong	HIV/AIDS carriers health care support	12	time	0	Department of Health		<input type="checkbox"/>
180401	Chamkar Luong	HIV/AIDS education during water festival	1	time	0	Department of Health		<input type="checkbox"/>
180401	Chamkar Luong	HIV/AIDS carrier searching out	0	time	0	Department of Health		<input type="checkbox"/>
180401	Chamkar Luong	Commune health center construction	1	place	0	Department of Health		✓
180401	Chamkar Luong	Breastfeeding awareness education	1	time	0	Department of Health		<input type="checkbox"/>
180401	Chamkar Luong	Tuberculosis cases searching and monitoring	0	time	0	Department of Health		<input type="checkbox"/>
180401	Chamkar	World TB combat week organizing	0	time	0	Department of Health		<input type="checkbox"/>

District Data Book 2009: Development Plans and Projects

Commune GIS	Commune	Temporary Agreements				Supporter	Funding Source	Listed in CIP before DIW
		Project Name	Quantity	Unit	Est.Cost (K.Riels)			
	Luong							
180401	Chamkar Luong	HIV/AIDS world day organizing	1	time	0	Department of Health		<input type="checkbox"/>
NREM								
180401	Chamkar Luong	Environmental awareness and law education	1	training	0	Department of Environment		✓
180401	Chamkar Luong	Environmental awareness and law education	1	training	0	Khmer Ahimsa		✓
Administration and Security								
180401	Chamkar Luong	Penal and civil law dissemination	1	training	0	Association for Development and Human Rights of Cambodia		✓
180401	Chamkar Luong	Khmer rouge trial dissemination	2	training	0	Association for Development and Human Rights of Cambodia		<input type="checkbox"/>
180401	Chamkar Luong	Laws dissemination and legal consultation services	2	time	0	Legal Aid of Cambodia		<input type="checkbox"/>
180401	Chamkar Luong	Penal and civil law dissemination	0	training	0	Khmer Ahimsa		✓
180401	Chamkar Luong	Human rights and law training	0	training	0	Khmer Ahimsa		✓
180401	Chamkar Luong	Abused/violated/illegal acts quelled activation	0	training	0	Khmer Ahimsa		✓
Gender								
180401	Chamkar Luong	Law against domestic violence dissemination	1	training	0	Association for Development and Human Rights of Cambodia		✓
180401	Chamkar Luong	Law against domestic violence dissemination	0	training	0	Khmer Ahimsa		✓
180401	Chamkar Luong	Weaving skill training/weaving craft creation	0	training	0	Khmer Ahimsa		✓
180401	Chamkar Luong	Vine/rattan/leaf/mat weaving skill training	0	training	0	Khmer Ahimsa		✓

8.2.2 Temporary Agreements for 2009 as per DIW 2008 for Commune: Kampong Seila

Commune GIS	Commune	Temporary Agreements				Supporter	Funding Source	Listed in CIP befor DIW
		Project Name	Quantity	Unit	Est.Cost (K.Riels)			
Economic								
180402	Kampong Seila	Pesticide request	1	package	0	Department of Agriculture Forestry and Fisheries		✓
180402	Kampong Seila	Chemical and pesticide application training	1	training	0	Department of Agriculture Forestry and Fisheries	PIF	✓
180402	Kampong Seila	Animal vaccination request	0	Head	0	Department of Agriculture Forestry and Fisheries		✓
Social								
180402	Kampong Seila	Mosquito larvae removal treatment	0	family	0	Department of Health		✓
180402	Kampong Seila	Safe poultry raising	6	time	0	CARE International in Cambodia		□
180402	Kampong Seila	Bird flue education dissemination materials support	1	set	240	CARE International in Cambodia		□
180402	Kampong Seila	Continuing literacy class	2	training	0	Department of Education Youth and Sports		□
180402	Kampong Seila	Contractual teachers support	2	training	0	Department of Education Youth and Sports		□
180402	Kampong Seila	Bird flue training and meeting support	5	time	2652	CARE International in Cambodia		□
180402	Kampong Seila	Contractual teachers support	3	person	4200	Department of Education Youth and Sports		□
180402	Kampong Seila	Latrine construction	40	well	0	Department of Rural Development	PIF	✓
180402	Kampong Seila	Capacity improvement roles of bird flue watchdog	12	time	800	CARE International in Cambodia		□
180402	Kampong Seila	Latrine use education training	1	Course/year	0	Department of Rural Development	PIF	□
180402	Kampong Seila	Mosquito nets distribution/treatment	0	family	0	Department of Health		✓
180402	Kampong Seila	Reproductive health awareness education	0	training	0	Department of Health		✓
180402	Kampong	Family planning	0	training	0	Department of Health		✓

District Data Book 2009: Development Plans and Projects

Commune GIS	Commune	Temporary Agreements				Supporter	Funding Source	Listed in CIP befor DIW
		Project Name	Quantity	Unit	Est.Cost (K.Riels)			
	Seila							
180402	Kampong Seila	Mosquito nets distribution/treatment	9	time	0	Partners for Development		✓
180402	Kampong Seila	Health education training for volunteer and CC	1	time	0	Partners for Development		□
180402	Kampong Seila	Local geographical data collection	1	time	0	Partners for Development		□
180402	Kampong Seila	VHV filling malaria form, transfer suspected malaria diagnosis to health center and record in malaria village notebook	1	time	0	Partners for Development		□
180402	Kampong Seila	Health center support committee meeting	4	time	0	Partners for Development		□
180402	Kampong Seila	VHV meeting support	6	time	0	Partners for Development		□
180402	Kampong Seila	Communication system establishing with health center committee	1	time	0	Partners for Development		□
180402	Kampong Seila	Village health volunteer supervision	6	time	0	Partners for Development		□
180402	Kampong Seila	Latrine construction	150	toilet	0	Department of Rural Development	PIF	✓
NREM								
180402	Kampong Seila	Community forestry protected law dissemination	4	training	0	Khmer Ahimsa		□
180402	Kampong Seila	Environmental awareness and environment law training	1	training	0	Department of Environment		□
Administration and Security								
180402	Kampong Seila	Gambling control/elimination activation	4	training	0	Khmer Ahimsa		✓
180402	Kampong Seila	Information board provision/creation/built	4	piece	0	Khmer Ahimsa		✓
180402	Kampong Seila	Drug and related law education	4	training	0	Khmer Ahimsa		✓
180402	Kampong	Laws dissemination and legal	3	training	0	Legal Aid of Cambodia		□

Commune GIS	Commune	Temporary Agreements				Supporter	Funding Source	Listed in CIP before DIW
		Project Name	Quantity	Unit	Est.Cost (K.Riels)			
	Seila	consultation services						
Gender								
180402	Kampong Seila	Law against domestic violence dissemination	3	training	0	Association for Development and Human Rights of Cambodia		✓
180402	Kampong Seila	Law against trafficking dissemination	3	training	0	Association for Development and Human Rights of Cambodia		✓
180402	Kampong Seila	Law against domestic violence dissemination	4	training	0	Khmer Ahimsa		✓

8.2.3 Temporary Agreements for 2009 as per DIW 2008 for Commune: Ou Bak Roteh

Commune GIS	Commune	Temporary Agreements				Supporter	Funding Source	Listed in CIP before DIW
		Project Name	Quantity	Unit	Est.Cost (K.Riels)			
Economic								
180403	Ou Bak Roteh	Pesticide request	0	bottle	0	Department of Agriculture Forestry and Fisheries		✓
180403	Ou Bak Roteh	Livestock vaccination and disease curing	1	time	0	Department of Agriculture Forestry and Fisheries		□
180403	Ou Bak Roteh	Laterite road repairing	10	km	0	Department of Rural Development		✓
Social								
180403	Ou Bak Roteh	Health center management committee meeting	6	time	0	Department of Health		□
180403	Ou Bak Roteh	DOTS strategy implementation to cure TB	6	Month	0	Department of Health		□
180403	Ou Bak Roteh	Fever, inflammation respiration disease and diarrhea curing and supervision	12	time	0	Department of Health		□
180403	Ou Bak Roteh	TBA meeting	12	time	0	Department of Health		□
180403	Ou Bak	Patient transportation means support	0	time	0	Department of Health		□

District Data Book 2009: Development Plans and Projects

Commune GIS	Commune	Temporary Agreements				Supporter	Funding Source	Listed in CIP befor DIW
		Project Name	Quantity	Unit	Est.Cost (K.Riels)			
	Roteh							
180403	Ou Bak Roteh	Village health worker meeting	12	time	0	Department of Health		<input type="checkbox"/>
180403	Ou Bak Roteh	Tuberculosis cases searching and monitoring	0	time	0	Department of Health		<input type="checkbox"/>
180403	Ou Bak Roteh	Outdoor medical consultation	0	time	0	Department of Health		<input type="checkbox"/>
180403	Ou Bak Roteh	Vitamin A and deworming pills supply	6	Time	0	Department of Health		<input type="checkbox"/>
180403	Ou Bak Roteh	Vaccination support, pregnancy medical check, birth spacing and ferrous medicines provision	0	Time	0	Department of Health		<input type="checkbox"/>
180403	Ou Bak Roteh	Nutrition education training to VHV	24	training	3532	CARE International in Cambodia		✓
180403	Ou Bak Roteh	Contractual teachers support	1	person	0	Department of Education Youth and Sports		<input type="checkbox"/>
180403	Ou Bak Roteh	Continuing literacy class	0	class	0	Department of Education Youth and Sports		<input type="checkbox"/>
180403	Ou Bak Roteh	Distribution workers meeting support	12	time	0	Department of Health		<input type="checkbox"/>
180403	Ou Bak Roteh	Local geographical data collection	1	time	0	Partners for Development		<input type="checkbox"/>
180403	Ou Bak Roteh	Village health volunteer supervision	6	time	0	Partners for Development		<input type="checkbox"/>
180403	Ou Bak Roteh	Health management committee system establishing	1	time	0	Partners for Development		<input type="checkbox"/>
180403	Ou Bak Roteh	VHV meeting support	6	time	0	Partners for Development		<input type="checkbox"/>
180403	Ou Bak Roteh	Health center support committee meeting	4	time	0	Partners for Development		<input type="checkbox"/>
180403	Ou Bak Roteh	Impregnation mosquito net distribution	0	mosqui-net	0	Department of Health		<input type="checkbox"/>
180403	Ou Bak Roteh	Health education training for volunteer and CC	1	time	0	Partners for Development		<input type="checkbox"/>

District Data Book 2009: Development Plans and Projects

Commune GIS	Commune	Temporary Agreements				Supporter	Funding Source	Listed in CIP before DIW
		Project Name	Quantity	Unit	Est.Cost (K.Riels)			
180403	Ou Bak Roteh	Community learning center construction	0	place	0	Department of Education Youth and Sports		<input type="checkbox"/>
180403	Ou Bak Roteh	Nutrition education training to VHV	9	time	0	Partners for Development		✓
180403	Ou Bak Roteh	Ring wells construction	43	well	0	Department of Rural Development		✓
180403	Ou Bak Roteh	Village health post construction	1	place	0	Department of Health		✓
180403	Ou Bak Roteh	HIV/AIDS world day organizing	1	time	0	Department of Health		<input type="checkbox"/>
180403	Ou Bak Roteh	Primary school construction	1	building	168000	Department of Education Youth and Sports		✓
180403	Ou Bak Roteh	World TB combat week organizing	1	time	0	Department of Health		<input type="checkbox"/>
180403	Ou Bak Roteh	VHV filling malaria form, transfer suspected malaria diagnosis to health center and record in malaria village notebook	1	time	0	Partners for Development		<input type="checkbox"/>
Administration and Security								
180403	Ou Bak Roteh	Laws dissemination and legal consultation services	2	time	0	Legal Aid of Cambodia		<input type="checkbox"/>

8.2.4 Temporary Agreements for 2009 as per DIW 2008 for Commune: Stueng Chhay

Commune GIS	Commune	Temporary Agreements				Supporter	Funding Source	Listed in CIP befor DIW
		Project Name	Quantity	Unit	Est.Cost (K.Riels)			
Economic								
180404	Stueng Chhay	Pesticide spraying support	0	Time	0	Department of Agriculture Forestry and Fisheries		<input type="checkbox"/>
180404	Stueng Chhay	Livestock vaccinating support	0	Time	0	Department of Agriculture Forestry and Fisheries		<input type="checkbox"/>
180404	Stueng Chhay	Vegetable seed and farming tools request	0	Kg	0	Department of Agriculture Forestry and Fisheries	PIF	✓

District Data Book 2009: Development Plans and Projects

Commune GIS	Commune	Temporary Agreements				Supporter	Funding Source	Listed in CIP before DIW
		Project Name	Quantity	Unit	Est.Cost (K.Riels)			
Social								
180404	Stueng Chhay	Contractual teachers support	3	person	0	Department of Education Youth and Sports		<input type="checkbox"/>
180404	Stueng Chhay	Village health post construction	1	place	0	Department of Health		✓
180404	Stueng Chhay	Vaccination support, pregnancy medical check, birth spacing and ferrous medicines provision	0	time	0	Department of Health		<input type="checkbox"/>
180404	Stueng Chhay	Outdoor medical consultation	0	time	0	Department of Health		<input type="checkbox"/>
180404	Stueng Chhay	Vitamin A and deworming pills supply to children	0	time	0	Department of Health		<input type="checkbox"/>
180404	Stueng Chhay	World TB combat week organizing	1	time	0	Department of Health		<input type="checkbox"/>
180404	Stueng Chhay	School building	1	building	0	Department of Education Youth and Sports		✓
180404	Stueng Chhay	DOTS strategy implementation to cure TB	6	Month	0	Department of Health		<input type="checkbox"/>
180404	Stueng Chhay	Health center management committee meeting	6	time	0	Department of Health		<input type="checkbox"/>
180404	Stueng Chhay	Village health worker meeting	12	time	0	Department of Health		<input type="checkbox"/>
180404	Stueng Chhay	Distribution workers meeting support	12	time	0	Department of Health		<input type="checkbox"/>
180404	Stueng Chhay	TBA meeting	4	time	0	Department of Health		<input type="checkbox"/>
180404	Stueng Chhay	Fever, inflammation respiration disease and diarrhea control training	6	time	0	Department of Health		<input type="checkbox"/>
180404	Stueng Chhay	Impregnated mosquitoes net distribution	0	time	0	Department of Health		<input type="checkbox"/>
180404	Stueng Chhay	Literacy class	2	class	168000	Ministry of Education Youth and Sports		✓
180404	Stueng Chhay	Tuberculosis cases searching and monitoring	6	time	0	Department of Health		<input type="checkbox"/>

District Data Book 2009: Development Plans and Projects

Commune GIS	Commune	Temporary Agreements				Supporter	Funding Source	Listed in CIP before DIW
		Project Name	Quantity	Unit	Est.Cost (K.Riels)			
180404	Stueng Chhay	Breastfeeding awareness education	1	time	0	Department of Health		<input type="checkbox"/>
180404	Stueng Chhay	HIV/AIDS world day organizing	1	time	0	Department of Health	PIF	<input type="checkbox"/>
180404	Stueng Chhay	Bird flue awareness promotion	4	time	492	CARE International in Cambodia		<input type="checkbox"/>
180404	Stueng Chhay	Bird flue awareness training	1	training	2160	CARE International in Cambodia		<input type="checkbox"/>
180404	Stueng Chhay	Dissemination materials support	1	set	240	CARE International in Cambodia		<input type="checkbox"/>
180404	Stueng Chhay	School building	1	building	168000	Ministry of Education Youth and Sports		✓
180404	Stueng Chhay	Patient transportation support	0	time	0	Department of Health		<input type="checkbox"/>
NREM								
180404	Stueng Chhay	Public rubbish bin sitting	20	Garbage bin	0	Department of Environment		✓
Administration and Security								
180404	Stueng Chhay	Laws dissemination and legal consultation services	2	time	0	Legal Aid of Cambodia		<input type="checkbox"/>
180404	Stueng Chhay	Khmer rouge trial dissemination	1	training	0	Association for Development and Human Rights of Cambodia		<input type="checkbox"/>
Gender								
180404	Stueng Chhay	Law against domestic violence dissemination	2	training	0	Association for Development and Human Rights of Cambodia		✓
180404	Stueng Chhay	Woman and children's rights dissemination	2	training	0	Association for Development and Human Rights of Cambodia		✓

Source: CDPD, District Level Detail TA resulting from DIW

8.3 Outputs, estimated and actual costs of C/S Fund Projects between 2005 and 2008, by Commune

Commune	Project Type	Budget Year	Output		Quantity	Unit	Unit Cost MR	
			Description	Type			Estimate	Actual
Chamkar Luong	Rural Transport	2006	Laterite road	New	0.833	Km	14.95	48.66
Chamkar Luong	Rural Transport	2006	Concrete bridge (general)	New	1	Place	33.71	48.66
Chamkar Luong	Rural Transport	2007	Laterite road	New	1.098	Km	26.59	27.49
Chamkar Luong	Rural Transport	2008	Laterite road	New	0.861	Km	25.77	28.33
Chamkar Luong	Rural Transport	2008	Single pipe culvert	New	1	Place	2.41	28.33
Kampong Seila	Rural Transport	2005	Laterite road	New	1.27	Km	18.58	25.90
Kampong Seila	Rural Transport	2005	Laterite road	Repair	0.95	Km	7.32	25.90
Kampong Seila	Rural Domestic Water Supplies	2006	Ring well	New	3	Place	4.22	4.22
Kampong Seila	Rural Transport	2006	Single pipe culvert	New	4	Place	6.72	25.83
Kampong Seila	Rural Transport	2006	Laterite road	New	0.354	Km	11.85	25.83
Kampong Seila	Rural Transport	2006	Laterite road	Upgrade	0.998	Km	8.03	25.83
Kampong Seila	Rural Transport	2007	Laterite road	Repair	0.55	Km	6.74	35.58
Kampong Seila	Rural Transport	2007	Laterite road	New	0.8	Km	28.53	35.58
Kampong Seila	Rural Transport	2008	Laterite road	New	0.735	Km	20.51	20.00
Ou Bak Roteh	Rural Transport	2006	Double cell box culvert	New	1	Place	18.68	22.47
Ou Bak Roteh	Rural Transport	2006	Drain pipe for flood water	New	1	Line	16.00	28.67
Ou Bak Roteh	Rural Transport	2006	Earth road	Repair	0.58	Km	4.42	22.47
Ou Bak Roteh	Rural Transport	2006	Earth road	New	0.84	Km	6.11	28.67
Ou Bak Roteh	Rural Transport	2006	Earth road	Repair	0.841	Km	5.90	28.67
Ou Bak Roteh	Rural Transport	2007	Laterite road	New	0.5	Km	7.82	31.71
Ou Bak Roteh	Rural Transport	2007	Double cell box culvert	New	1	Place	23.75	31.71
Ou Bak Roteh	Rural Transport	2008	Laterite road	New	1.05	Km	31.49	31.59
Stueng Chhay	Rural Transport	2005	Single pipe culvert	New	2	Place	2.03	20.60
Stueng Chhay	Education	2005	School yard	Upgrade	1	Place	2.97	2.97
Stueng Chhay	Rural Transport	2005	Laterite road	New	0.312	Km	4.94	20.60
Stueng Chhay	Rural Transport	2005	Laterite road	Repair	1.26	Km	14.14	20.60
Stueng Chhay	Rural Transport	2006	Single cell box culvert	New	1	Place	13.11	24.60
Stueng Chhay	Rural Transport	2006	Laterite road	Repair	1.2	Km	14.29	24.60
Stueng Chhay	Rural Transport	2007	Laterite road	New	1.2	Km	27.09	27.63
Stueng Chhay	Rural Transport	2008	Double cell box culvert	New	1	Place	32.33	32.30

Source: PID

8.4 Total Expenditure on C/S Fund Projects by sector and commune between 2005 and 2008

Sector	Total Cost in Million Riels			
	Chamkar Luong	Kampong Seila	Ou Bak Rotih	Stueng Chhay
Education				2.97
Rural Domestic Water Supplies		4.22		
Rural Transport	104.48	107.31	114.44	105.12

*Source: PID***8.5 Actual 2009 C/S Fund projects by Commune**

Commune	Project Type	Project Output		Quantity	Unit	Fund Source (Riels)		
		Description	Type			Total	C/S	Local Contribution
Chamkar Luong	Rural Transport	Laterite road	Upgrade	0.68	km	34,084,900	33,884,900	200,000
Chamkar Luong	Rural Transport	Single pipe culvert 0.6m diameter	New	1	Place	34,084,900	33,884,900	200,000
Kampong Seila	Rural Transport	Single cell box culvert 2.0m x 1.5m	New	1	Place	42,200,000	42,000,000	200,000
Kampong Seila	Rural Transport	Double cell box culvert 3.0m x 2.0m	New	1	Place	42,200,000	42,000,000	200,000
Kampong Seila	Rural Transport	Vented causeway	New	1	Place	42,200,000	42,000,000	200,000
Ou Bak Rotih	Rural Transport	Laterite road	Upgrade	0.5	km	46,969,925	46,669,925	300,000
Ou Bak Rotih	Rural Transport	Laterite road	Upgrade	0.54	km	46,969,925	46,669,925	300,000
Ou Bak Rotih	Rural Transport	Single pipe culvert 0.6m diameter	New	1	Place	46,969,925	46,669,925	300,000
Stueng Chhay	Rural Transport	Laterite road	Upgrade	1.5	km	33,614,000	33,414,000	200,000

Source: PID

9 District level Projects from 2006 to 2009

District Initiative Projects (DIPs) are funded by Danida, DFID and PSDD (UNDP, DFID and SIDA).

Funding for 2006-2008

Between 2006 and 2008 there were 14 provinces funded by PSDD and 10 by Danida and DFID. The list of provinces and who funded these is below

Danida and DFID funded DIPs:

Kampong Cham	Kampong Speu	Koh Kong	Kratie	Monduliri
Pursat	Ratanakiri	Siem Reap	Sihanoukville	Kep

PSDD funded DIPs:

Banteay Meanchey	Battambang	Kampong Chhnang	Kandal	Phnom Penh
Prey Veng	Svay Rieng	Takeo	Kampong Thom	Preah Vihear
Stung Treng	Kampot	Oddar Meanchey	Pailin	

Funding for 2009

In 2009 there was a change to the number of provinces funded by the two streams. Danida and DFID were still funding the same 10 provinces they had been funding the previous three years, but two more provinces were added *Kampong Thom and Kampot*. Now PSDD funds 12 provinces and Danida and DFID fund 12.

9.1 District Initiative Infrastructure Projects from 2006 to 2009

9.1.1 District Initiative Infrastructure Projects for 2006 to 2008

No District Initiative Infrastructure Projects were implemented in this district for 2006-2008

9.1.2 District Initiative Infrastructure Projects in 2009

No District Initiative Infrastructure Projects have been implemented in this district for 2009

9.2 District Initiative Service Projects from 2006 to 2009

9.2.1 District Initiative Service Projects for 2006 to 2008

No District Initiative Service Projects were implemented in this district for 2006-2008

9.2.2 District Initiative Service Projects in 2009

No District Initiative Service Projects have been implemented in this district for 2009

9.3 Inter Commune Council Projects in 2008 and 2009**9.3.1 ICC Projects in 2008**

Districts	Project Location	Beneficiary Commune/ Sangkat	Outputs	Project Size	Unit	Contract Cost	Fund Sources	
							ICC Fund	Community
Mitapheap	1 & 3	1 & 3	Concrete road	161	meter	\$21,500.00	\$20,500.00	\$1,000.00
	3&4	3&4	Concrete Culvert	1	place	\$12,500.00	\$11,780.77	\$719.00
Total for Mitapheap						\$34,000.00	\$32,280.77	\$1,719.00
Prey Nup	Sam Rong	SamRong & AndoungThma	Laterite road upgrade	700	meter	\$10,037.00	\$10,037.00	\$0.00
			Single pipe	2	place			
	SamRong & AndoungThma	SamRong & AndoungThma	Triple Culvert with gate	1	place	\$19,500.00	\$18,550.00	\$950.00
	Andong Thma, O' Oknha Heng	Andong Thma, O' Oknha Heng, Boeng Taprom, Bit trang, Cheong Ko, O' Chriv	Environment and sanitation education	2	Session	\$1,400.00	\$1,400.00	\$0.00
	Choeng Ko, Samaki, Tuk La Ak	Choeng Ko, Samaki, Tuk La Ak	Bill-board on wildlife preservation	2	Unit	\$600.00	\$600.00	\$0.00
			Anti-wildlife hunting campaign	1	Session			
Total for Prey Nup						\$31,537.00	\$30,587.00	\$950.00
Stueng Hav	Kampenh & Otres	Kampenh , Otres ,Tomnoporlorc	Gravel road	278	meter	\$30,000.00	\$30,000.00	\$0.00
Total for Stoeng Hav						\$30,000.00	\$30,000.00	\$0.00
Kampong Seila	O' Baroteh	Kampong Sela, O' Bakroteh	Laterite road and culvert construction	400	Metre	\$11,700.00	\$11,640.00	\$60.00
	O' Baroteh	Kampong Sela, O' Bakroteh	Office construction for tourism community	1	Unit	\$10,780.00	\$10,740.00	\$40.00
Total for Kampong Seila						\$22,480.00	\$22,380.00	\$100.00
Total for Prah Sihanouk						\$118,017.00	\$115,247.77	\$2,769.00

9.3.2 ICC Projects in 2009

Districts	Project Location	Beneficiary Commune/ Sangkat	Outputs	Project Size	Unit	Contract Cost	Fund Sources	
							ICC Fund	Community
Krong Phreah Sihanouk	Sangkat 3	Sangkat 1 and Sangkat 3	Concrete Road Construction	180	Meter		\$20,000.00	\$251.00
	Sangkat 1, 2, 3 & Koh Rong	Sangkat 1, 2, 3 & Koh Rong	Training on Animal Raising	1	Course		\$2,228.44	
			Female Cow	5	Cow			
Total for Mitapheap						\$0.00	\$22,228.44	\$251.00
Prey Nup	Andoung Thmar	Angdoung Thmar, Samrong, Tual Tortueng	Laterite Road Construction	950	Meter		\$20,000.00	
			Culvert	3	Places			
	Chueng Kor	Chueng Kor, Sammaki, Veal Rinh	Laterite Road Construction	1,050	Meter		\$15,000.00	
Total for Prey Nup						\$0.00	\$35,000.00	\$0.00
Stoeng Hav	Tumnub Rolork	Kam Penh, Ou Thres, Tumnub Rolork	Gravel Road Construction	385	Meter		\$33,600.00	\$125.00
Total for Stoeng Hav						\$0.00	\$33,600.00	\$125.00
Total for Sihanoukville						\$0.00	\$90,828.44	\$376.00

Source: ICC project, Ministry of Interior (DoLA), -UNDP project for Local Governance – DDLG

9.4 Other Projects in 2008 and 2009

9.4.1 RPRP

There are no RPRP projects being implemented in this district or province at this time. The RPRP is only being implemented in Svay Rieng and Prey Veng

9.4.1.1 RPRP Projects from 2006 to 2008

No RPRP projects in this district at this time

9.4.1.2 RPRP Projects in 2009

No RPRP projects in this district at this time

9.4.2 Seth Korma

9.4.2.1 Seth Koma 2007

There are no Seth Korma projects being implemented in this district or province at this time.

Source: UNICEF

9.4.2.2 Seth Koma 2008

There are no Seth Korma projects being implemented in this district or province at this time.

Source: UNICEF

9.4.2.3 Seth Koma 2009

There are no Seth Korma projects being implemented in this district or province at this time.

Source: UNICEF

SECTION D: SERVICES AND ORGANIZATIONS

10 Infrastructure

10.1 Length of and Expenditure on Roads in 2008, by District

Roads	SHV	Preah Sihanouk	Prey Nub	Stoeung Hao	Kampong Seila
Length of paved road in the district in Km	30	28	0	2	0
Length of unpaved roads in the district in Km	28	9	17	2	0
Amount spent on construction of roads in 2008 (\$)	203,308	37,245	141,241	24,822	0
Amount spent on repair and rehabilitation of roads in 2008 (\$)	5,000	5,000	0	0	0

Note 1: Please note that these data are not necessarily complete or correct. The data are derived from government agencies at provincial and district level which used different recording systems, did not always have complete data or were, sometimes, less than willing to share their data.

Note 2: Please be aware that these data are incomplete due to the fact that the amounts for the construction, repair and rehabilitation recorded reflect only funds provided by the government, not the contributions by any other parties.

10.2 Scale of and Expenditure on Irrigation in 2008, by District

Irrigation	SHV	Preah Sihanouk	Prey Nub	Stoeung Hao	Kampong Seila
Number of irrigation schemes operating in 2008	50	3	47	n/a	n/a
Total nr of hectares under irrigation in dry season 2008	-	n/a	n/a	n/a	n/a
Total funds spent in 2008 on construction of irrigation systems (\$)	-	n/a	n/a	n/a	n/a
Total funds spent in 2008 on rehabilitation/repair of irrigation systems (\$)	19,867	n/a	19,867	n/a	n/a
Total funds spent in 2008 on operation and mainten/ance (\$)	33,261	n/a	33,261	n/a	n/a

Note 1: Please note that these data are not necessarily complete or correct. The data are derived from government agencies at provincial and district level which used different recording systems, did not always have complete data or were, sometimes, less than willing to share their data.

Note 2: Please be aware that the data above are incomplete as these only reflect funds provided by the government, not the contributions by farmers or other parties.

10.3 Power Supply in 2008, by District

Electricity	SHV	Preah Sihanouk	Prey Nub	Stoeung Hao	Kampong Seila
Total number of electricity connections to households	13,345	7,598	3,500	2,247	n/a
Total number of electricity connections to agencies, companies, organizations	1,022	1,014	7	1	n/a
Total volume in KWh of electricity consumed last in 2008	1,950,216	n/a	87,500	75,018	n/a
Total amount collected from users for consumed electricity (\$)	1,655,170	1,537,920	43,750	73,500	n/a
Per capita electricity consumption in 2008 in Kwh	221	178	25	18	n/a

Note 1: Please note that these data are not necessarily complete or correct. The data are derived from government agencies at provincial and district level which used different recording systems, did not always have complete data or were, sometimes, less than willing to share their data.

Note 2: These data only record electricity provided by electricity companies and does not include homes powered by generators or batteries (for this information see Section B: General Profile, Part 1: General Information; table 1.3.1 and chart 1.3.4).

Note 3: In most provinces electricity is only provided through town-based networks

Note 4: Per capita consumption is calculated by dividing the total volume of electricity produced in 2008 by the number of people living in each district as per the 2008 census (for the provincial data it is calculated against the number of people living in the province)

11 Health Facilities

Please note that the Operational District (health) boundaries are different to the administrative district boundaries. Therefore the data provided here shows the facilities, staff, NGOs etc in each Operational District within the province NOT the administrative district.

Acronyms

Com Cov	Commune Covered	MW2	Secondary Midwives
CPA	Complementary Package of Activities	NU1	Primary Nurse
Dr	Doctor	NU2	Secondary Nurse
FDH	Former District Hospital	OD	Operational District
HC	Health Center	Others	Other Staff
HC (NB)	Health Center no building	PHD	Provincial Health Department
HP	Health Post	Pop 04-05	Population Covered 2004 or 2005
MA	Medical Assistant	RH	Referral Hospital
MPA	Minimum Package of Activities	Vil Cov	Village Covered
MW1	Primary Midwives	VIL-HC	Distance from Village to Health Center

11.1 Health Facilities in the Province, by Operational District

Sihanouk Ville	OD	RH	HC	HP
Sihanouk Ville	1		10	2
Total	1	0	10	2

11.2 Health Facilities and Staff in the province, by Operational District

This table shows health facilities, staff and coverage of health facilities in each operational district.

No	Facility Name	Type	Class	Dr	Ma	Nu2	Nu1	Mw2	Mw1	Others	Com Cov	Vil Cov	Pop. 04-05
Sihanouk Ville													
1	Andaung Thma	HC	MPA	1	0	1	3	0	2	1	3	14	14,441
2	Cheung Kou	HC	None MPA	0	0	0	0	0	0	0	1	9	9,828
3	Kaoh Rung	HP	Nil	0	0	0	0	0	0	0	1	4	2,178
4	O Chrov	HC	MPA	0	0	3	2	2	0	0	2	11	16,251
5	O Oknha Heng	HC	MPA	0	1	2	5	0	1	1	2	10	13,078
6	Preak Kranh	HP	Nil	0	0	0	2	0	0	0	1	1	1,047
7	Ream	HC	MPA	0	0	7	2	0	1	0	2	7	12,022
8	Sangkat Muoy	HC	MPA	0	2	2	2	4	0	0	2	6	32,439
9	Sihanoukville	HC	MPA	2	1	4	3	3	2	1	2	9	35,336
10	Steung Hav	HC	MPA	1	2	8	1	1	1	0	3	10	12,861
11	Tuek L'ak	HC	MPA	0	0	2	3	1	1	0	3	10	10,252
Total:				4	6	29	23	11	8	3	22	91	159,733

Source: MEDiCAM – Infrastructure - (http://www.medicam-cambodia.org/hsi/health_system/srch/index.asp?cboLcn=6&cmdSearch=Search&cboCHName=&cboType=)

11.3 Deliveries in 2007 in the Province, by Operational District

OD	Deliveries	Deliveries at home		Deliveries	Total deliveries	Total deliveries
	at HC	By Health Staff	ByTBAs	at RH	by Health Staff	by health staff and TBAs
Sihanouk	578	619	453	600	1797	2250
<i>Sub-total</i>	<i>578</i>	<i>619</i>	<i>453</i>	<i>600</i>	<i>1797</i>	<i>2250</i>

Source: MoH, Annual Statistics 2007

12 Education³

12.1 Schools, Classes, Students, Staff, for all levels, for 2007/2008 by District

District	Number of Schools	Disadv. Schools	Number of Classes	Classes in Pagoda	Enrollment		Repeaters		Teaching Staff		Non-Teaching Staff		Total Staff	
					Total	Girl	Total	Girl	Total	Female	Total	Female	Total	Female
Mittapheap	28	1	491	4	18,060	8,481	949	359	665	294	93	42	758	336
Prey Nup	59	0	506	0	22,133	10,224	2,096	855	505	164	106	15	611	179
Stung Hav	9	0	69	2	2,844	1,346	112	36	92	29	11	2	103	31
Whole Province	96	1	1,066	6	43,037	20,051	3,157	1,250	1,262	487	210	59	1,472	546
- Urban Area	96	1	1,066	6	43,037	20,051	3,157	1,250	1,262	487	210	59	1,472	546

12.2 Characteristics of Schools and School Principals for 2007/2008 by Commune

Commune	Number of Schools				2 - Shift	Floating	Schools	Attached	Schools Without		Characteristics of School Principals (Incharge)			
	Pre-Sch	Primary	College	Lycee	Schools	Schools	in Pagoda	Pre-Sch	Water Sup.	Latrine	Avg. Age	Avg. Service	U.Sec+ Ed.	Female
Chamkar Luong	0	3	1	0	4	0	0	0	2	2	33.3	5.8	0	0
Kampong Seila	0	4	0	1	4	0	0	0	1	1	33.0	10.0	1	1
Ou Bak Roteh	0	4	2	0	4	0	0	0	0		35.8	15.2	1	0
Stueng Chhay	0	2	1	0	2	0	0	0	1		32.0	11.0	2	0

12.3 Enrolment by Level of Education, 2006/2007 by Commune

Commune	School	Pre school		Primary School		Lower Secondary School		Upper Secondary School		Enrolment	
		Total	Female	Total	Female	Total	Female	Total	Female	Total	Female
Chamkar Luong	3	0	0	865	428	0	0	0	0	865	428
Kampong Seila	4	0	0	1395	668	306	134	35	13	1736	815
Ou Bak Roteh	6	0	0	1404	629	149	62	0	0	1553	691
Stueng Chhay	3	0	0	743	357	145	63	0	0	888	420

³ All the data for section 12 comes from the Ministry of Education, Youth and Sport (MoEYS)

12.4 Enrolment by Level of Education, 2007/2008 by Commune

Commune	School	Pre school		Primary School		Lower Secondary School		Upper Secondary School		Enrolment	
		Total	Female	Total	Female	Total	Female	Total	Female	Total	Female
Chamkar Luong	4	0	0	873	399	45	20	0		918	419
Kampong Seila	5	0	0	1413	636	306	131	75	23	1794	790
Ou Bak Roteh	6	0	0	1027	493	166	72	0		1193	565
Stueng Chhay	3	0	0	716	361	164	73	0		880	434

12.5 Aspects of Enrolment for 2007/2008 by Commune

Commune	% Repeaters (Total)			% Over-age Enrollment (Total)			% Repeaters (Girl)			% Over-age Enrollment (Girl)		
	Primary	L.Sec.	U.Sec.	Primary	L.Sec.	U.Sec.	Primary	L.Sec.	U.Sec.	Primary	L.Sec.	U.Sec.
Chamkar Luong	4.9	0.0	0.0	32.5	31.1	0.0	4.8	0.0	0.0	31.1	20.0	0.0
Kampong Seila	11.0	4.6	5.3	29.9	71.9	65.3	11.3	3.8	8.7	31.1	65.6	56.5
Ou Bak Roteh	11.0	1.2	0.0	22.9	57.8	0.0	9.3	0.0	0.0	22.1	50.0	0.0
Stueng Chhay	5.2	1.2	0.0	18.3	71.3	0.0	3.6	2.7	0.0	21.6	74.0	0.0

12.6 School Buildings for all schools in the District for 2007/2008, by Commune

Commune	Total Number of		Concrete/Brick Structure		Wooden Structure		Bamboo Structure		New Buildings		Buildings Without Good		
	Buildings	Rooms	Buildings	Rooms	Buildings	Rooms	Buildings	Rooms	Repaired	Constructed	Floor	Roof	Wall
Chamkar Luong	3	16	3	16	0	0	0	0	0	0	0	0	0
Kampong Seila	7	36	6	31	1	5	0	0	1	2	0	0	0
Ou Bak Roteh	8	35	6	29	2	6	0	0	0	4	2	2	2
Stueng Chhay	3	16	3	16	0	0	0	0	0	0	0	0	0

12.7 Conditions of Classrooms and Existence of Separate School Office and Library, by Commune

Commune	Number of Class rooms	Number of Classrooms			Classrooms Without Good			Number of Furniture needed				Schools with Separate	
		in Pagoda	New Repaired	New Constr.	Floor	Roof	Wall	Desks	Chairs	Black-board	Teacher Table	Office	Library
Chamkar Luong	14	0	0	0	0	0	0	0	0	0	0	0	0
Kampong Seila	30	0	5	10	0	0	0	0	0	0	0	2	1
Ou Bak Roteh	22	0	0	19	8	6	6	0	0	0	0	2	1
Stueng Chhay	14	0	0	0	0	0	0	0	0	0	0	1	0

12.8 Community Participation and Financing across all schools in the District for 2007/2008 by Commune

Commune	Parent Association				Comm. Teachers	Teaching Monks	PAP Fund (Riel)		Number of Schools Obtaining Funds from				
	Exists	Held Meet	Total	Female			per Student	per School	Sch. Income	Community	Gvt. For building	Abroad	IOs/NGOs
Chamkar Luong	3	2	3	0	0	0	9,078	2,560,000	0	0	0	0	0
Kampong Seila	5	5	5	1	0	0	9,177	4,267,333	0	0	0	0	0
Ou Bak Roteh	6	2	4	0	0	0	7,719	2,022,367	0	0	0	0	0
Stueng Chhay	3	3	5	1	0	0	8,756	3,253,000	0	0	0	0	0

12.9 Percentage Student Flow Rates and Graduation by level 2006/2007, by Commune

Commune	Primary Level (Grades 1-6)			Lower Secondary Level (Grades 7-9)			Upper Secondary Level (Grades 10-12)			Successful Candidates		
	Promotion	Repetition	Dropout	Promotion	Repetition	Dropout	Promotion	Repetition	Dropout	Grade 6	Grade 9	Grade 12
Chamkar Luong	79.8	5.0	15.3	0.0	0.0	0.0	0.0	0.0	0.0	81	0	0
Kampong Seila	69.6	10.5	19.9	63.4	4.6	32.0	85.7	11.4	2.9	123	46	0
Ou Bak Roteh	52.6	8.0	39.4	57.7	1.3	40.9	0.0	0.0	0.0	90	0	0
Stueng Chhay	66.4	5.0	28.7	80.0	1.4	18.6	0.0	0.0	0.0	53	9	0

13 Staff and Resources at the District

This chapter presents data from the District Information System, collected around the middle of 2009 unless otherwise specified.

13.1 District Councilors elected in 2009

Name	Sex	Year of Birth	Function	Phone
ដឹក ហ្ន៊ី	M	1950	Chairperson of The Council	012-529 264
តុប ពេញ	M	1963	Councillor	017-452 163
សូ ប៊ុនណារ៉ា	M	1948	Councillor	015-500 493
ពីរ សៀកហាន់	F	1958	Councillor	106-723 766
ត្រុយ រតនា	M	1961	Councillor	011-683 888
ហាម ប៊ុនហៀង	M	1952	Councillor	092-825 807
ព្រំ បូណា	M	1961	Councillor	016-303 386
កែវ សារិន	M	1965	Councillor	016-884 935
ទេព ណាប់	M	1945	Councillor	092-738 808
យ៉ង់ ពន្លក	M	1972	Councillor	016-389 129
ឡាយ សាហាន	M	1969	Councillor	012-308 925

13.2 Committees of the Council

Please note at the time of producing the district data books the composition of the committees was not known for all district councils and therefore data were not available for 13.2.1, 13.2.2, 13.2.3.

13.2.1 Technical Facilitation Committee

13.2.2 Women's and Children's Affairs Committee

13.2.3 Procurement Committee

13.3 Board of Governors

Name	Sex	DoB	Function	Salary Level	Body	Phone
ខេង តេង	M	1954	District Governor			016-222 366
សន កុសល	M	1964	District Deputy Governor	ខ.១.៥	Medium Civil Servant	016-890 892
សេង ស៊ីណាត	F	1972	District Deputy Governor	ខ.៣.៩	Medium Civil Servant	016-629 927

13.4 Offices under Sala Krong, Sala Srok and Sala Khan

Office Name	Chief		Deputy Chief		No. of Staff				Office Area (m2)	No of vehicle (public or program)	
					State		Contract			vehicle	moto
	M	F	M	F	M	F	M	F			
District/ Khan Cabinet	1	0	0	0	6	0	0	1	Borrow	0	0
Adminnistration Office	1	0	0	0	0	0	0	0	14	0	0

13.5 Municipality/District/Khan line offices

Office Name	Chief		Deputy Chief		No. of Staff				Office Area (m2)	No of vehicle (public or program)	
					State		Contract				
	M	F	M	F	M	F	M	F		vehicle	moto
District/ Khan Police Headquarter	1	0	3	0	43	0	0	0	312	0	8
District/ Khan Military Police Headquarter	1	0	2	0	8	0	0	0	192	0	2
District/ Khan Military Subregion	1	0	2	0	2	0	0	0	113.5	0	0
Planning Office	0	1	0	0	0	0	0	0	Borrow	0	0
Environment Office	1	0	0	0	0	0	0	0	Borrow	0	0
Education Office	1	0	1	0	4	2	0	0	63	0	0
Agriculture Office	1	0	0	0	0	0	0	0	20	0	0
Cult and Religion Office	1	0	0	0	0	0	0	0	Borrow	0	0
Lan Management Office	1	0	2	0	0	0	0	0	48	0	0
Industry Office	0	0	0	0	0	0	2	0	Borrow	0	0

13.6 Properties and Equipment of District Administration

13.6.1 Buildings

Description	Unit	Number	Remark
Office building type			
- Concrete	building	1	
- Wood	building	0	
- Mixed	building	1	
Total floor space	m2		
- Concrete	m2	0	
- Wood	m2	0	
- Mixed	m2	120	
Building condition			
- Concrete	%	60	
- Wood	%	0	
- Mixed	%	80	
Office reserved land area	m2	0	
Total office land area	m2	9,875	

13.6.2 Means of Transport available at the District Administration

Description	Unit	Number	Remark
Vehicle (type, size and condition)	Vehicle	0	
Motorcycle (type, size and condition)	Motor	0	

13.6.3 Equipment in District Offices

Description	Unit	Number	Remark
Generator	per set	1	
Photocopy machine at the office	per set	0	
Private photocopy machine at the district town	place	0	
Telephone network (mobile line service)	network	0	
Telephone network (land line service)	network	0	
Fax (include Fax number)	per set	0	
Computer	per set	0	
Printer	per set	0	
Scanner	Per set	0	
Number of computers those can access Internet and email services in the municipality/ district/khan office (including the technical line offices (please provide the email address)	set	0	
Typewriters (including the technical line offices)	per set	2	
Staff of Municipality/district/khan office can use computer	person	0	

13.6.4 Equipment and facilities at the District Town

Description	Unit	Number	Remark
Availability of electricity at noon	Nr Hours	0	
Private internet and email services in the municipality/ district/khan town.	place	0	

13.7 Registered Revenue of the District Administration in 2008⁴

13.8 Services in the District

13.8.1 Public Sector Services

Type of Infrastructure/services	Unit	Number	
		Public	Private
Schools			
Pre-school	room		
Primary School	room	74	0
Secondary school	room	15	0
High School	room	10	0
University	room		
Health			
Health post	place		
Health center	place	1	0
Referral Hospital	bed		

⁴ Please note that the data in this table are at best estimates. If the table appears blank it does not mean there is no revenue, just that the data have not been recorded/entered.

13.9 Civil Society Organizations active in the District

13.9.1 NGOs, Associations, Programs and Projects

Name	Abbr.	Sector Activities	No. of Target Communes	No. of Target Villages	Office in District
NA	NA	អប់រំបំបាត់អំពើហិង្សា	4	14	No
NA	NA	អប់រំសុខភាព	4	14	No
PAC	PAC	បំប្លែងជីវិត	4	14	No

13.9.2 Political Parties active in the Municipality, District and Khan

Name	Abbr.	Office in District
Cambodian People Party	CPP	Yes
FUNCINPEC Party	FUNCINPEC	Yes
NRP	NRP	Yes
SAM RAINSY Party	Sam Rainsy Party	Yes

13.10 Private Sector Organizations

13.10.1 Registered Companies in 2008, by District

On private sector at commune and/or district level	SHV	Preah Sihanouk	Prey Nub	Stoeung Hao	Kampong Seila
Businesses and Companies					
Number of registered agricultural enterprises (except family farms)					
Number of registered shops, restaurants, transporters and other services	324	321	0	2	1
Number of manufacturing companies	15	15	0	n/a	0
Number of registered forestry enterprises	-	0	0	0	0
Number of registered mining companies	-	0	0	0	1
Number of fin/ancial institutions	8	8	n/a	n/a	0
Number of other commercial institutions	3	3	n/a	n/a	0
Estimated number of informal enterprises (not registered)	n/a	n/a	n/a	n/a	n/a
Employment					
Number of people employed in 2008 by companies or any other enterprises	12,913	9,959	2,006	948	n/a
Investment					
Amount invested in 2008 by private sector (\$)	45,970	45,970	n/a	n/a	n/a
Markets					
Number of markets, operating at least weekly	19	8	9	n/a	n/a

Note: These data are not comprehensive as different companies and business are registered with different departments and not all departments were able or willing to provide detailed information. The number of informal enterprises reflects a rough estimate, made at provincial level and could not be verified.

Source: Unofficially collected at Provincial Level

13.10.2 Farmers in 2008, by District

Credit	SHV	Preah Sihanouk	Prey Nub	Stoeung Hao	Kampong Seila
Volume of credit provided to farmers in 2008 (\$)	84,375	84,375	n/a	n/a	n/a
Number of farmers receiving credit in 2008	45	45	n/a	n/a	n/a
Volume of credit provided to companies in 2008 (\$)	N/A	N/A	n/a	n/a	n/a

Note: Please note that these data are not necessarily complete or correct. The data are derived from government agencies at provincial and district level which used different recording systems, did not always have complete data or were, sometimes, less than willing to share their data.

Source: Unofficially collected at Provincial Level

SECTION E: POVERTY DATA

14 Data on Poverty

14.1 Predicted Poverty Rates for 2009, by commune

The **Predicted Family Poverty Rate** is based on a statistical model (robust multilevel mixed effect regression) at village level developed by the NCDD M&E Unit and uses CDB data for making an estimate of the predicted poverty rate (this is: *the portion of total families in the district or commune who are expected to be poor*) for the following year using current year data.

The basis for this predicted poverty rate also uses IDPoor (a project of the Ministry of Planning with technical assistance provided by GTZ) data

Commune	2004	2009
Chamkar Luong	34.30%	23.10%
Kampong Seila	31.80%	25.60%
Ou Bak Roteh	36.50%	25.40%
Stueng Chhay	31.50%	27.40%

14.2 Poverty data from survey

14.2.1 Identification of Poor Households Program (IDPoor)

The Ministry of Planning IDPoor Program has developed standardized Procedures for Identification of Poor Households in rural areas. These Procedures are implemented using a participatory and consultative process by sub-national government structures and community representatives.

The IDPoor Program is managed by the Ministry of Planning (MOP), in cooperation with the Ministry of Interior's Department of Local Administration (DOLA). The program is supported by the Federal Republic of Germany, with technical assistance provided by German Technical Cooperation (GTZ). In 2009, AusAID also provided funding support to the Program.

Objective

The IDPoor Program aims to implement the Procedures for Identification of Poor Households in rural areas as widely as possible, in order to provide data on the level of poverty of areas and households that can be used by a large range of institutions and organizations for targeting services and development assistance to poor areas and poor households.

Coverage: During 2007, 2008 and 2009 the IDPoor Procedures have been implemented in 18 provinces (with partial or complete coverage), covering a total of around 7000 rural villages. The MOP and a number of NGO partners who are Health Equity Fund Operators have collaborated in collecting this data from different areas.

Categorization: Identified poor households are classified under two poverty categories: Poor Level 1 (very poor), and Poor Level 2 (poor). Households are classified based on data collected using a standard questionnaire, together with consideration by villagers of these households' special circumstances.

Further information: Please go to the IDPoor Program webpage at www.mop.gov.kh/Projects/IDPoor/tabid/154/Default.aspx

This District has not yet been covered by IDPoor